

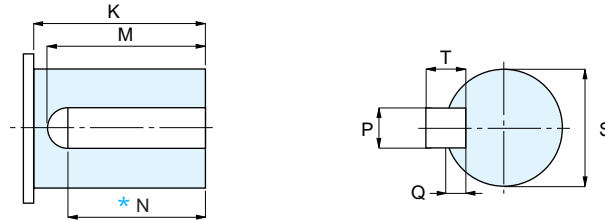
Detailed Dimension Diagram of output shaft for common

GTR Mini Series

G-Type

H-Type

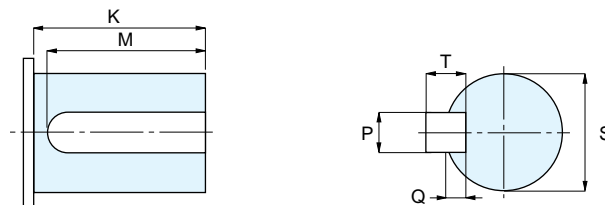
F2-Type(F2F)



Dimension Frame Number	K	M	N	S(h ₆)		Key			Q	
						P(h ₉)		T		
12	22	20	18	12	0 - 0.011	4	0 - 0.030	4	0 - 0.030	2.5
15	27	24	21.5	15		5		5		3
18	30	27	24	18		6		6		3.5
22	40	35	32	22	0 - 0.013	8	0 - 0.036	7	0 - 0.090	4
28	45	40	36	28		10		8		5
32	55	50	45	32	0 - 0.016	12	0 - 0.043	8	0 - 0.090	5
40	65	60	54	40						

* Dimension "N" is the key-length of water-resistant type.
For that for GT-Type, ask us if required.

GTR-L Series

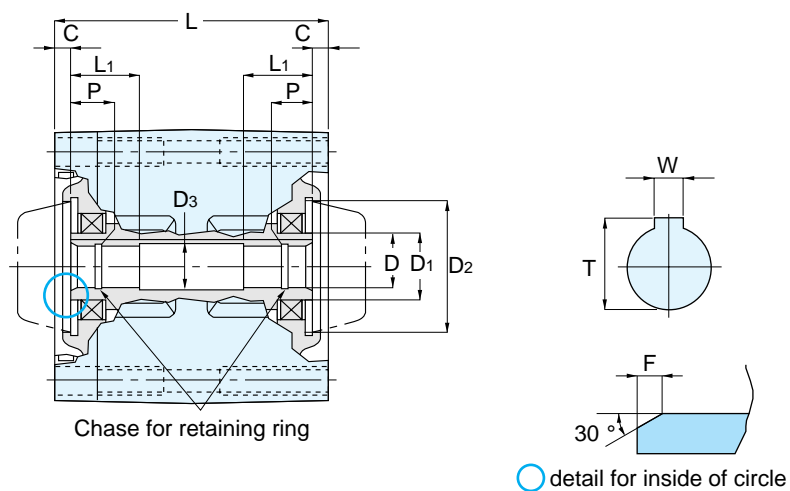


Dimension Frame Number	K	M	S(h ₇)		Key			Q	
					P(h ₉)		T		
10	20	18	10	0 - 0.015	4	0 - 0.030	4	0 - 0.030	2.5
12	22	20	12	0 - 0.018					
15	25	22	15						

Detailed Dimension of Hollow Shaft

GTR Mini Series

F2-Type(F2S)



Frame Number	D (H ₈)	D ₁	D ₂ (H ₈)	D ₃	W	T	L	L ₁	P	C	F
12	12	20	39	13	4	13.8	81	20	8	5.5	2
15	15	24	39	16	5	17.3	96	21	9	4	2

Note) The C-Type Snap Ring conforms to JIS-B2804-1978
 The C-Type Snap Ring is not attached to the product.

Parallel Shaft Performance Table/ Dimension

Gearmotor with Brake

Water-resistant Gearmotor with Brake

Speed Control Gearmotor

Gearmotor with Clutch /Brake

GT-Type Gearmotor with Brake

Right Angle Shaft Performance Table/ Dimension

Gearmotor with Brake

With Water-resistant Brake Motor

Speed Control Gearmotor

Concentric Hollow Shaft Concentric Solid Shaft Performance Table/ Dimension

Gearmotor with Brake

With Water-resistant Brake Motor

Speed Control Gearmotor

Parallel Shaft GTR-L Series Performance Table/ Dimension

Reversible Gearmotor with Brake

Speed Control Gearmotor with Brake

Technical Information

Standard Motors

Cautions for Safety

Option