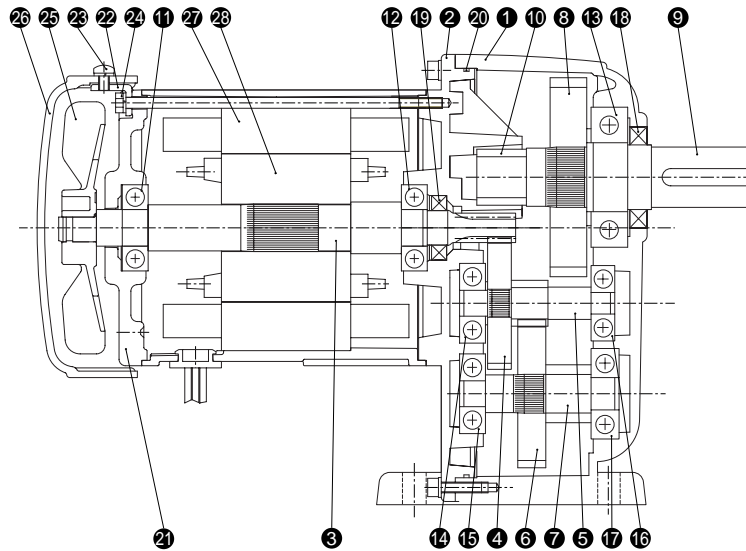


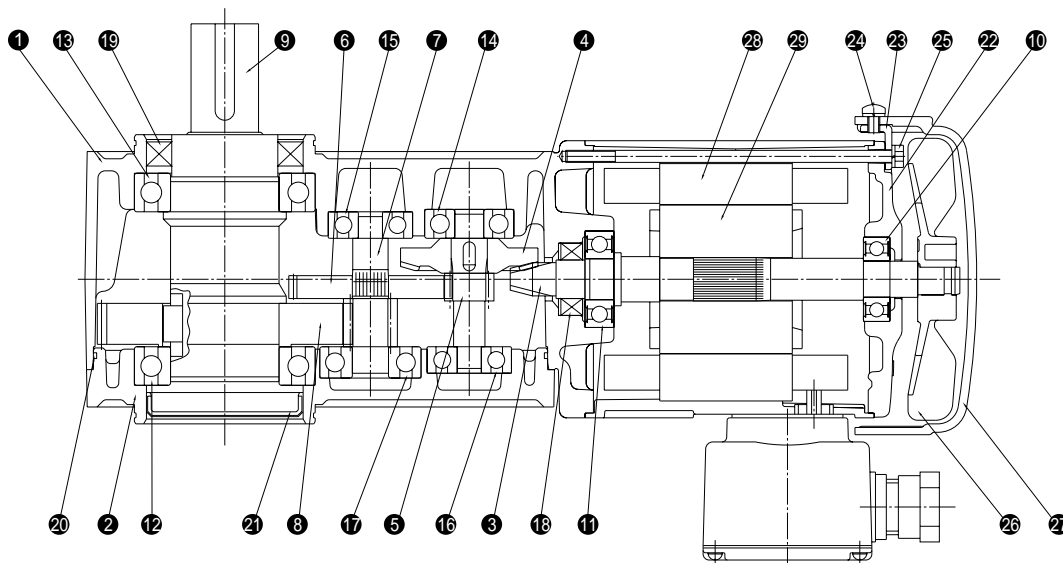
Structural chart and Nameplate

Parallel Shaft



- | | | | | | |
|------------------|---------------------|-----------|------------|-------------------|---------------|
| ① Case | ⑥ 2 Shaft Gear | ⑪ Bearing | ⑱ Bearing | ⑳ Motor Bracket | ㉒ Fan Cover |
| ② Bracket | ⑦ 2 Shaft Pinion | ⑫ Bearing | ⑲ Bearing | ㉓ Stay | ㉔ Stator Core |
| ③ Input Shaft | ⑧ Output Shaft Gear | ⑬ Bearing | ⑳ Oil seal | ㉕ Attaching Screw | ㉖ Rotor Core |
| ④ 1 Shaft Gear | ⑨ Output Shaft | ⑭ Bearing | ㉑ Oil seal | ㉗ Eye Bolt | |
| ⑤ 1 Shaft Pinion | ⑩ Metal | ⑮ Bearing | ㉒ O-ring | ㉘ Fan | |

Right Angle Shaft (Solid Shaft type)



- | | | | | | |
|------------------|---------------------|-----------|------------|-------------------|---------------|
| ① Case | ⑥ 2 Shaft Gear | ⑪ Bearing | ⑱ Bearing | ㉑ Seal cap | ㉖ Fan |
| ② Case Cover | ⑦ 2 Shaft Pinion | ⑫ Bearing | ⑲ Bearing | ㉒ Motor Bracket | ㉗ Fan Cover |
| ③ Input Shaft | ⑧ Output Shaft Gear | ⑬ Bearing | ⑳ Oil seal | ㉓ Stay | ㉔ Stator Core |
| ④ 1 Shaft Gear | ⑨ Output Shaft | ⑭ Bearing | ㉑ Oil seal | ㉕ Attaching Screw | ㉖ Rotor Core |
| ⑤ 1 Shaft Pinion | ⑩ Bearing | ⑮ Bearing | ㉒ O-ring | ㉗ Eye Bolt | |

Parallel Shaft
(Performance Table/Dimension)

Gearmotor with Brake

Water-resistant, Outdoor Gearmotor with Brake

Gearmotor with Clutch/Brake

Reducer (Double Shaft)

S-Type Reducer

Right Angle Shaft
(Performance Table/Dimension)

Gearmotor with Brake

Water-resistant, Outdoor Gearmotor with Brake

Gearmotor with Clutch/Brake

Reduce (Double Shaft)

S-Type Reducer

Hollow Shaft Solid Shaft
Performance Table/Dimension

Gearmotor with Brake

Water-resistant, Outdoor Gearmotor with Brake

Reduce (Double Shaft)

S-Type Reducer

Concentric Hollow Shaft
Concentric Solid Shaft
Performance Table/Dimension

Gearmotor with Brake

Water-Resistant, Outdoor Gearmotor with Brake

Reducer (Parallel Shaft)

S-Type Reducer

Technical Information

Standard Motors

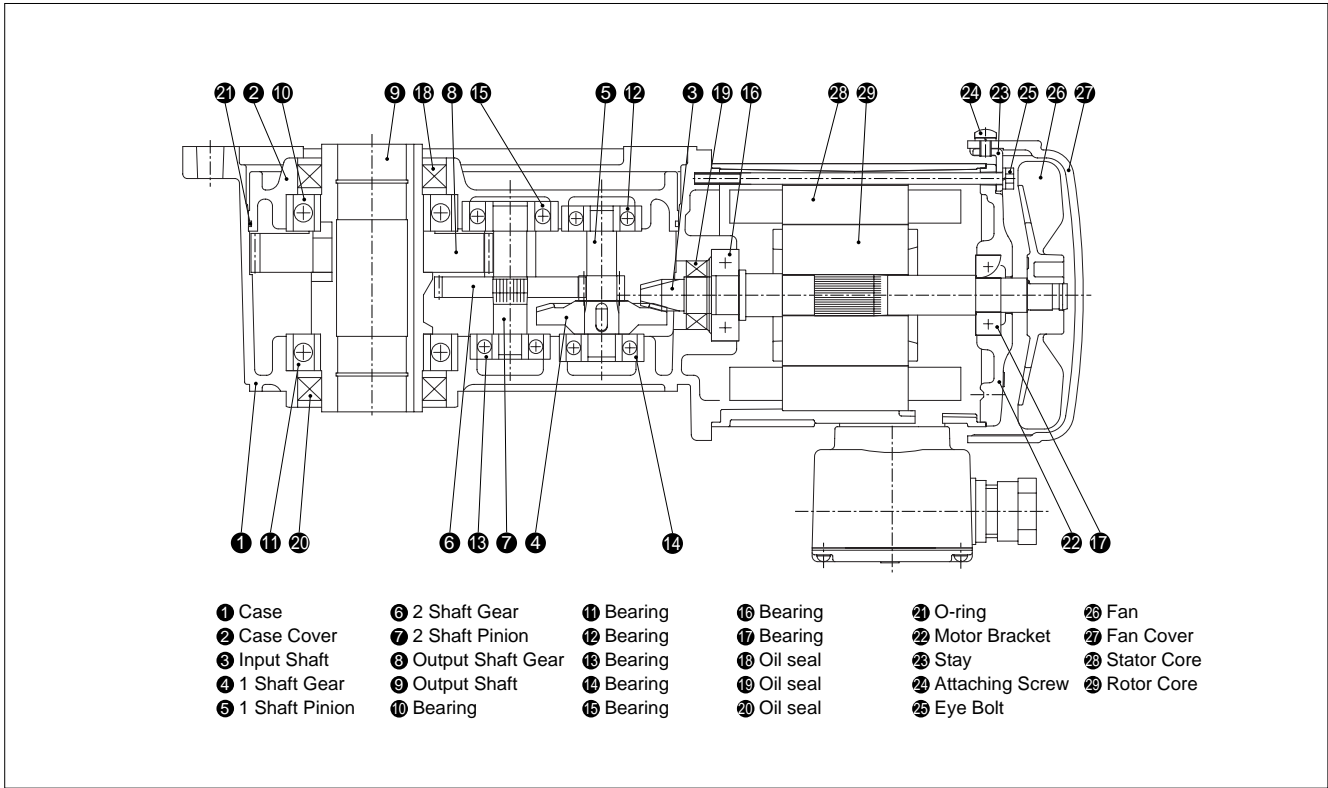
Cautions for Safety

Option

GT-STEP Index Gearmotor

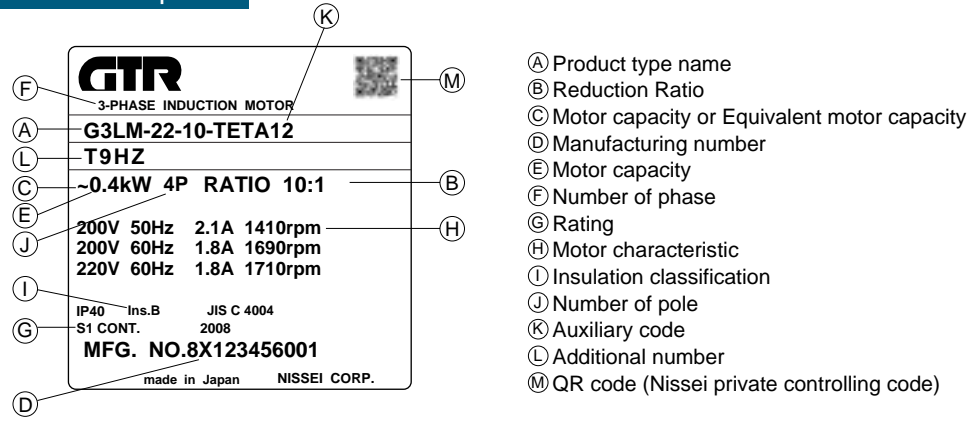
KOMPASS Gearbox

Right Angle Shaft (Hollow shaft type)

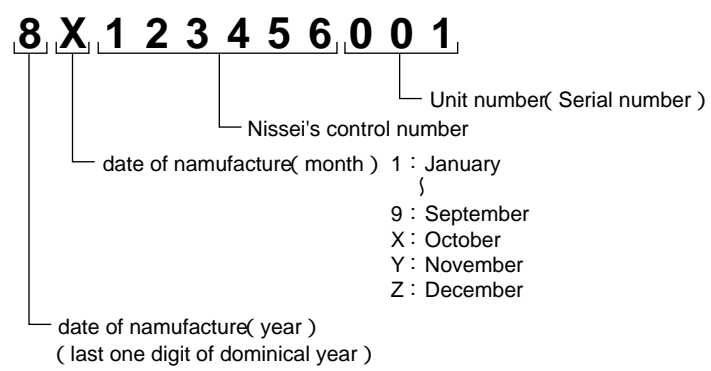


Parallel Shaft (Performance Table/Dimension)	Gearmotor with Brake
	Water-resistant, Outdoor Gearmotor with Brake
	Gearmotor with Clutch/Brake
	Reducer (Double Shaft)
	S-Type Reducer
Right Angle Shaft (Performance Table/Dimension)	Gearmotor with Brake
	Water-resistant, Outdoor Gearmotor with Brake
	Gearmotor with Clutch/Brake
	Reduce (Double Shaft)
	S-Type Reducer
Hollow Shaft Solid Shaft (Performance Table/Dimension)	Gearmotor with Brake
	Water-Resistant, Outdoor Gearmotor with Brake
	Reduce (Double Shaft)
	S-Type Reducer
Concentric Hollow Shaft Concentric Solid Shaft (Performance Table/Dimension)	Gearmotor with Brake
	Water-Resistant, Outdoor Gearmotor with Brake
	Reducer (Parallel Shaft)
	S-Type Reducer

How to read the Nameplate



How to read the manufacturing number



Technical Information
Standard Motors
Cautions for Safety
Option
GT-STEP Index Gearmotor
KOMPASS Gearbox