

Model & Type Designation Z-Type Reducer

机种·型号标识 Z型减速机

A Series Z-Type Reducers are classified by codes as shown below.
For order or inquiry, please indicate these codes.

(Note.1) The representatives of servomotors of other make that can be attachable, and the availability according to the flange type can be referred to on page 8 "Product List by motor matching, capacity, shape and category".
For details, please ask our nearest office or our CS Center.

A系列Z型减速机由下列记号予以标识，
所以订购或查询时请告知我们相应型号。

(注1)关于可用来配套的各公司伺服马达的典型机种以及法兰类型的标识，请参阅P. 8【马达有关数据·功率形状种类一览表】。
详细情况请就近查询我们的营业所或CS中心。

Type 型号	Frame number 框号	Shaft 轴	Speed ratio 速比	Precision 精度	Capacity 容量	Classification 种类	Classification 助号
A F2F Z	22	F	60	H	200	F1	
A F2S Z	30		25	L	400	S1	X
A H2L Z	32	L	30	L	750	S4	
A G3L Z	40		60	L	2000	K21	

Reduction Ratio 减速比

- 5 : 1/5
- 240 : 1/240

Shaft position 轴配置
Refer to the figures on the right (Types AF2F/AFF/AH2L only)
轴配置：参见右表 (仅AF2F/AFF/AH2L型)

Position 位置	背隙 Backlash	1 arcmin·3 arcmin 1分·3分	Low backlash 低背隙
Output shaft on the left when viewing from input side. 从输入侧观看输出轴出现在左侧时 <small>产品标牌</small>		轴位置记号 H	轴位置记号 L
Output shaft on the right when viewing from input side. 从输入侧观看输出轴出现在右侧时 <small>产品标牌</small>		轴位置记号 M	轴位置记号 R
Double shaft extension 输出轴出现在两侧时 <small>产品标牌</small>		轴位置记号 F	轴位置记号 T
status 输出轴：有无榫子		No 无	Yes 有

Auxiliary Code (Code indicating additional specs.) 辅助标记
(对特殊规格另行追加的标记)

- Blank : Standard specs. 空栏：标准机型
- X : 追加了特殊项目的产品

Classification by input shaft and/or flange shape (Note 1) 输入轴·法兰形状种类 (注1)

- F1
- S1
- K21

Corresponding capacity 对应功率

- 100 : 100W Equiv. 相当于100W
- 200 : 200W Equiv. 相当于200W
- 400 : 400W Equiv. 相当于400W
- 750 : 750W Equiv. 相当于750W
- 1000 : 1000W Equiv. 相当于1000W
- 2000 : 2000W Equiv. 相当于2000W

Code for accuracy 精度标记

- H : Backlash 1 arcmin 背隙1分
- M : Backlash 3 arcmin 背隙3分
- L : Low Backlash 30 arcmin 低背隙30分 (部分机种例外)

Frame No. and the diameter of output shaft 框的代号和输出轴的轴径
(AF2S/AFS Type: Bore diameter, Other type: Outer diameter) (AF2S/AFS为内径; 其它型号为外径.)

Motor Category Z: Z Type Reducer (without motor and servomotor attachable type) 马达的标识 Z: Z型减速机 (无马达·可适配伺服马达)

Shaft Type 安装方式的标识 (种类)

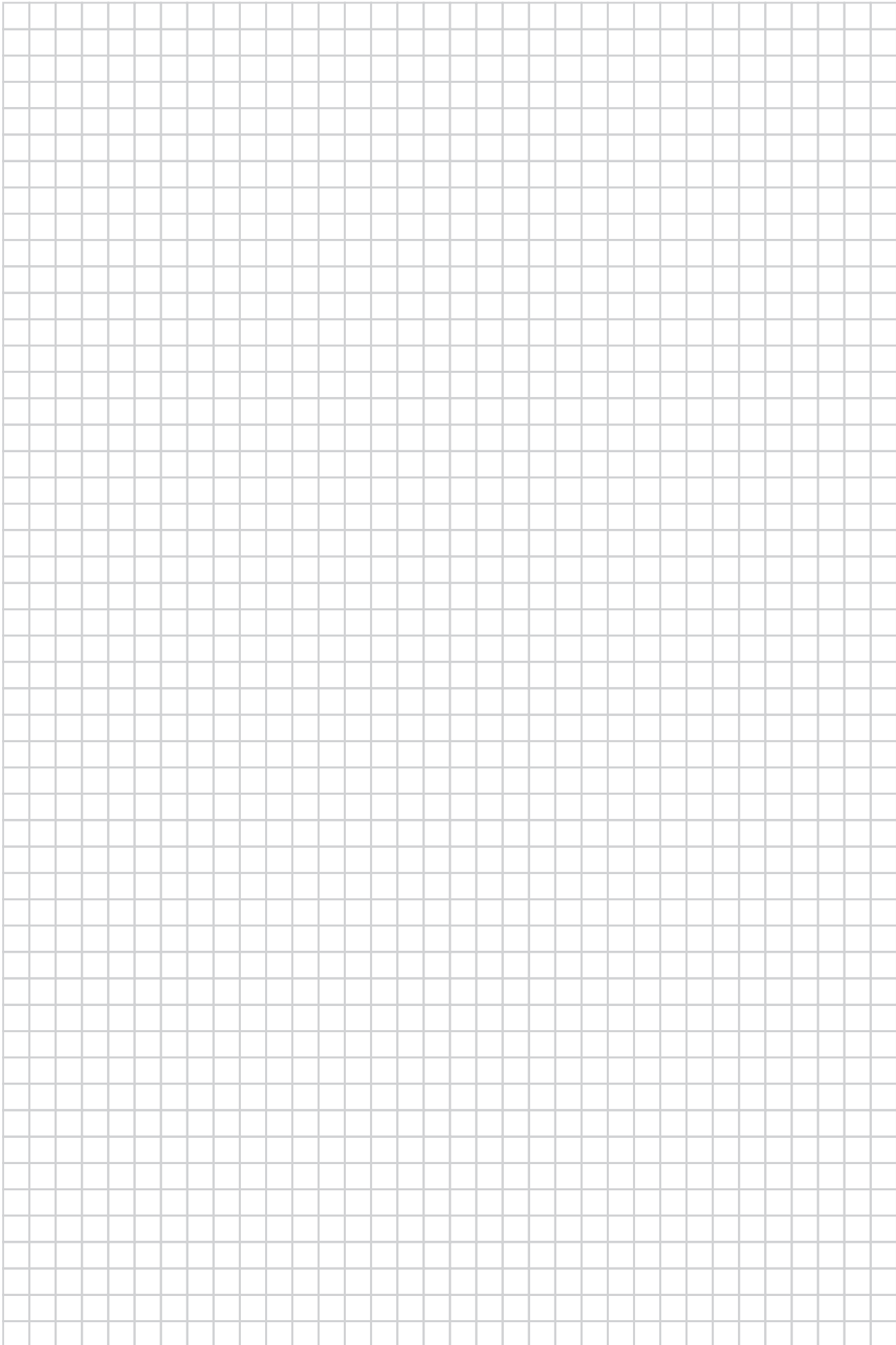
F2S : Concentric Hollow Shaft	同心中空轴
F2F : Concentric Solid shaft	同心中实轴
FS : Hollow Shaft	中空轴
FF : Solid Shaft	中实轴
H2L : Right Angle Shaft (Foot mounted Type)	直角轴 (底座安装)
G3L : Parallel Shaft (Foot mounted Type)	平行轴 (底座安装)
G3K : Parallel Shaft (Attached to Flange) Flange No.18 32	平行轴 (小法兰安装18~32号框)
G3F : Parallel Shaft (Attached to Flange) Flange No.40 50	平行轴 (大法兰安装40~50号框)

Series A : A Series (High Accuracy Reducer) 系列 A 系列 (高精度减速机)

!
In the type AF2S and AF2F, since the output shaft details of the products with the code H and M (backlash 1 / 3 arcmin) are different from that of the products with the code L (low backlash specs), please confirm it by the dimension diagram.
AF2S、AF2F型号的精密度标为H·M(背隙为1分·3分)的产品与精密度标为L(低背隙规格)的产品之间输出轴有微妙的不同，详细数据请在尺寸图上确认。

For the flange shape categories attachable with servomotor, please refer to page 8.
关于用来安装伺服马达的法兰的形状及种类，请参见P. 8

- Z-Type Reducer Z型减速机
- Backlash specs of servomotor 背隙1分·3分规格
- Low Backlash specs 低背隙规格
- Position servomotor attached 带定位伺服马达
- IPM servomotor attached 带IPM伺服马达
- Hollow Shaft 中空轴
- Solid Shaft 中实轴
- Right Angle Shaft 直角轴
- Parallel Shaft 平行轴
- Machine Model Line-up 机种构成
- Performance List 性能表·尺寸图
- Option 客户自选项
- Technical Information 技术资料



Z-Type Reducer
Z型减速机

Backlash spec. of
largest gear
容隙1分 2分
规格
Low Backlash
spec.
低背隙规格

Position servomotor
attached
带定位伺服马达

IPM servomotor
attached
带IPM伺服马达

Hollow Shaft
中空轴

Solid Shaft
中实轴

Right Angle Shaft
直交轴

Parallel Shaft
平行轴

Machine Model
Line-up
机种构成

Performance List
Dimension Diagram
性能表·尺寸图

Option
客户自选项

Technical
Information
技术资料

List by Motor Matching, Capacity and Shape : Z-Type Reducer 马达有关数据·功率形状种类一览表 z型减速机

List by Motor Matching, Capacity and Shape 马达有关数据·功率形状种类一览表

The List below indicates the representatives as of October, 2004. Since the specifications of servomotor change from time to time, we recommend you to reconfirm the servomotor flange dimensions and the dimension of servomotor attaching part of our reducer, when placing order.
The servomotors listed below are of standard specifications. For product of optional specs. such as oil seal attached motor, be sure to confirm whether it can be adaptable or not by the detailed drawings of input shaft/flange shape shown in page 64 69.
In case adaptable servomotor can be supplied beforehand, we assemble the Z Type Reducer with the servomotor and ship it as assembled unit. When assembling servomotor, the lead wire should be out in the bottom side as for the types AF2S-AF2F-AFS-AFF and should be out in the top side as for the other types, which is regarded as the standard setting.
For details, please ask our nearest office or our CS Center.

(Note1)The specifications of Tamagawa Seiki's TS4614 with oil seal is regarded as a custom made.

(Note2)The ADME Series of Hitachi Sanki System are regarded as custom made.

(Note3)The codes marked with only correspond to the specifications of backlash 1 arcmin / 3 arcmin.

※下表为2004年10月当时的代表机种，因伺服马达的规格会有所变动，所以在订购时，请一定确认好伺服马达的法兰尺寸，以及我公司减速机伺服马达安装部位的尺寸。

下表均为标准规格伺服马达的数据，如果客户有特殊要求比如需要油膜等，请一定查看P64-69输入轴·法兰形状详图，以确认好这种特殊规格的产品能否安装得上。

※如果客户提供伺服马达，我们可在公司内将其与z型减速机组装好后再向客户交货。另外，组装时，伺服马达电源引出线标准出口为：AF2S / AF2F / AFS / AFF型号自下方出来；其它型号自上方出来。

※详细情况请就近查询我们的营业所或者CS中心。

(注1)多摩川精机(株)的带油垫TS4614型号需特殊订货。(注2)(株)日立产机西斯特姆 ADM系列需特殊订货。(注3) 的形状种类标记仅限于背隙为1分·3分规格者。

Name of Manufacturer (order of the Japanese syllabary) 厂商名称(按50音图)	Type 型号	Motor capacity 马达功率 (w)							
		100	200	400	750	1000		1500	2000
						1 arcmin / 3 arcmin 1分·3分规格	Low backlash 低背隙规格		
OMRON Corp. 欧姆龙株式会社	A-Series R7M-A (Cylinder type) A系列 R7M-A (缸式)	100S1	200S2	400S1	750S1				
	A-Series R7M-AP A系列 R7M-AP	100F1	200F2	400F1	750F1				
	W-Series R88M-W (Cylinder type) W系列 R88M-W (缸式)	100S1	200S2	400S1	750S1				
	W-Series R88M-WP W系列 R88M-WP	100F1	200F2	400F1	750F1				
	U-Series UE-Type R88M-UE U系列 UE-Type R88M-UE	100S1	200S2	400S1	750S1				
	U-Series R88M-U U系列 R88M-U	100S1	200S2	400S1	750S1				
KEYENCE CORP. 株式会社基恩士	MV-Series MV系列	100S1	200S2	400S1	750S4				
Sanyo Denki Co., Ltd. 山洋电气株式会社	P1 P1					1000K31	2000K31		
	P2 P2					1000K22		2000K22	2000K22
	P3 P3	100S1	200S2	400S1	750S1				
	P6 P6					1000K32		2000K32	
	Q1-Series Q1系列	100S1	200S2	400S1	750S4	1000K22		2000K22	2000K22
Shinko Electric Co., Ltd. 神钢电机株式会社	BeBop-Series BM BeBop系列 BM	100S1	200S2	400S1	750S2	1000K32		2000K32	2000K32
	BeBop-Series BMC BeBop系列 BMC	100S1	200S2	400S1	750S2	1000K32		2000K32	2000K32
	BeBopZ-Series ZM BeBopZ系列 ZM	100S1	200S2						
Tamagawa Seiki Co., Ltd. 多摩川精机株式会社	TS4503, TS4603 TS4503, TS4603	100S1							
	TS4606 TS4606	100F1							
	TS4506, TS4507, TS4607 TS4506, TS4507, TS4607		200S2						
	TS4611 TS4611		200F2						
	TS4509, TS4609 TS4509, TS4609			400S1					
	TS4612 TS4612			400F1					
	TS4614 TS4614				750S2(注1)				
Toei Electric Co., Ltd. 东荣电机株式会社	VLBSV-Z VLBSV-Z	100S1	200S2	400S1	750S2(600W)				
	VLBSV VLBSV					1000K31	2000K31		
	VLBST VLBST		200S2	400S1					
Hitachi Industrial Equipment Systems Co., Ltd. 株式会社日立产机系统	ADMA-Series ADMA系列	100S1	200S2	400S1	750S2				
	ADMB-Series ADMB系列	100F1	200F2	400F1	750F2				
	ADME-Series ADME系列					2000K32(注2)			
	ADMG-Series ADMG系列					1000K22		2000K32	
See the appendix table on page 9. 详见第9页附表。									
FANUC, LTD. FANUC株式会社									
Fuji Electric FA Components & Systems Co., Ltd. 富士电机机器控制株式会社	GYS-Series GYS系列	100S1	200S2	400S1	750S1	1000K23	2000K23	2000K23	2000K23
	GVC-Series GVC系列	100F1	200F2	400F1		1000K33			
Matsushita Electric Industrial Co., Ltd. 松下电器产业株式会社	MINAS A-Series MQMA MINAS A系列 MQMA	100F3	200F3	400F3					
	MINAS A-Series MSMA MINAS A系列 MSMA	100S3	200S3	400S3	750S3			2000K21	2000K21
	MINAS A-Series MDMA MINAS A系列 MDMA					1000K32		2000K32	2000K32
Mitsubishi Electric Corp. 三菱电机株式会社	HC-UFS-Series HC-UFS系列	100F1	200F2	400F1	750F2				
	HC-UF-Series HC-UF系列	100F1	200F2	400F1	750F2				
	HC-KFS-Series HC-KFS系列	100S1	200S2	400S1	750S2				
	HC-MF-Series HC-MF系列	100S1	200S2	400S1	750S2				
	HC-MFS-Series HC-MFS系列	100S1	200S2	400S1	750S2				
	HC-PQ-Series HC-PQ系列	100S1	200S2	400S1					
	HA-LH-Series HA-LH系列					1000K33	2000K33		
	HA-SH-Series HA-SH系列					1000K33	2000K33	2000K33	
	HC-LFS-Series HC-LFS系列					1000K33	2000K33	2000K33	
	HC-RF-Series HC-RF系列					1000K23	2000K23	2000K23	2000K23
	HC-RFS-Series HC-RFS系列					1000K23	2000K23	2000K23	2000K23
	HC-SFS-Series HC-SFS系列					1000K33	2000K33	2000K33	
	HC-SF-Series HC-SF系列					1000K33	2000K33	2000K33	
	HF-SP-Series HF-SP系列					1000K33	2000K33	2000K33	
	YASKAWA Electric Corp. 株式会社安川电机	-L-Series SGML -L系列 SGML	100S1	200S2	400S1	750S1			
II-Series SGMPH II系列 SGMPH		100F1	200F2	400F1	750F1				
II-Series SGMAH II系列 SGMAH		100S1	200S2	400S1	750S1				
III-Series SGMAS III系列 SGMAS		100S1	200S2	400S1	750S1				
III-Series SGMP5 III系列 SGMP5		100F1	200F2	400F1	750F1				
WAKO GIKEN Co., Ltd. 株式会社WACO技研	CNE CNE	100S1	200S2	400S1					
	C C			400S3	750S3				

Matching List of FANUC-made Motors FANUC(株) 马达有关数据 一览表

- ※ A form classification sign filled into applies to products with 1- or 2-minute backlash specifications.
- ※ If mountable servomotors are provided by customers for NISSEI products, NISSEI will mount them to the products before shipping. For details, contact your NISSEI representative or the CS Center.
- ※ 的形状机种标记仅限于背隙1分・3分规格的机种。
- ※ 如果客户提供伺服马达，我们可在公司内将其组装好后一并交货。
详细情况请就近查询我们的营业所或者CS中心。

Name of Manufacturer 厂商名称	Type 型号	Code by capacity and shape 功率形状机种标记
FANUC Corporation FANUC(株)	0.2 / 5000is、M0.2	100S1
	0.3 / 5000is、M0.3	100S1
	0.4 / 5000is、M0.4	200S5
	0.5 / 5000is、M0.5	200S5
	1 / 5000is、M1	400S1
	2 / 4000is	
	4 / 4000is	750S6
	8 / 3000is	2000F31
	12 / 3000is	2000F33
	1 / 5000i	
	2 / 5000i	
	4 / 4000i	2000F31
	8 / 3000i	2000F31
	2 / 5000i	
	4 / 5000i	
8 / 4000i	2000F31	

Standard Model Lineup 标准机型一览表

Z-Type Reducer Z型减速机

type AF2S AF2S型号
type AF2F AF2F型号

Select proper reducer with the capacity of 2000W equiv. for the servomotor with the capacity of 1500W.

※如果伺服马达为1500W, 则请选配对应功率为2000W的减速机。

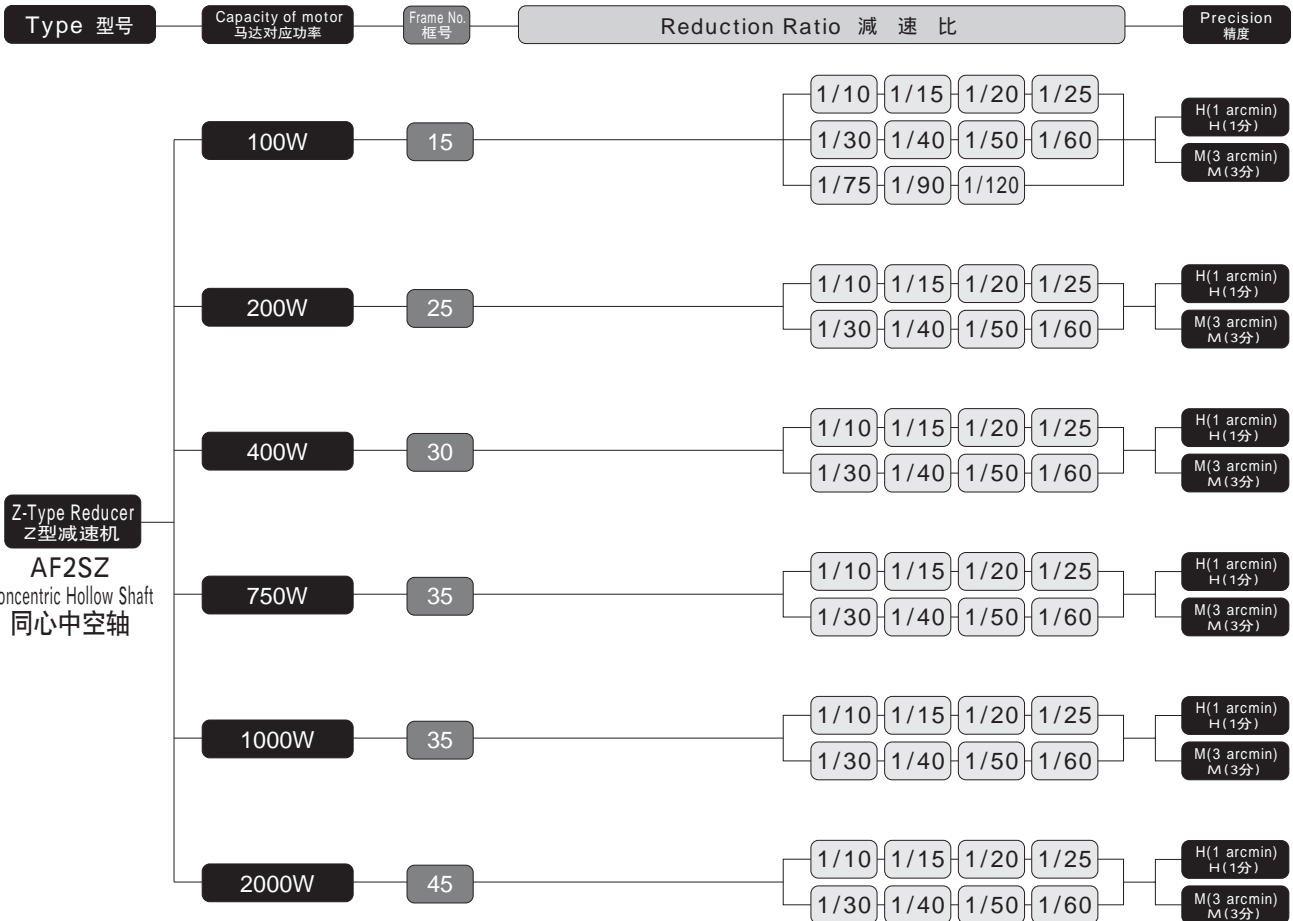
※Refer to page 12-13 for the machine line-up of low backlash specs (accuracy of 30 arcmin and more).
※低背隙规格(精度为30分~)机型的一览表请参见P.12-13



In the type AF2S and AF2F, since the output shaft details of the products with the code H and M (backlash 1 / 3 arcmin) are different from that of the products with the code L (low backlash specs), please confirm it by the dimension diagram.
AF2S、AF2F型号的精度标号为H·M(背隙为1分·3分)的产品与精度标号为L(低背隙规格)的产品之间输出轴有微妙的不同, 详细数据请在尺寸图上确认。

List of Models of AF2S Type (with Hollow Shaft) AF2S型号(中空轴)的标准机型一览表

Backlash 1 arcmin·3 arcmin specs.
1分·3分背隙规格



Z-Type Reducer
Z型减速机
Backlash spec. of 1 arcmin/3 arcmin
背隙1分·3分规格
Low Backlash spec.
低背隙规格
Position servomotor attached
带定位伺服马达
IPM servomotor attached
带IPM伺服马达

Hollow Shaft
中空轴
Solid Shaft
中实轴
Right Angle Shaft
直角轴
Parallel Shaft
平行轴

Machine Model Line-up
机种构成
Performance List
Dimension Diagram
性能表·尺寸图
Option
客户自选项
Technical Information
技术资料



Select proper reducer with the capacity of 2000W equiv. for the servomotor with the capacity of 1500W.
※如果伺服马达为1500W, 则请选配对应功率为2000W的减速机。

※Refer to page 12-13 for the machine line-up of low backlash specs(accuracy of 30 arcmin and more).
※低背隙规格(精度为30分~)机型的一览表请参见P.12-13



In the type AF2S and AF2F, since the output shaft details of the products with the code H and M(backlash 1 / 3 arcmin) are different from that of the products with the code L(low backlash specs), please confirm it by the dimension diagram.
AF2S、AF2F型号的精度标号为H、M(背隙为1分·3分)的产品与精度标号为L(低背隙规格)的产品之间输出轴有微妙的不同, 详细数据请在尺寸图上确认。

(Note1) Frame No. 18 has no shaft positioning code of "M" since it is a double shaft attaching type. It can be used by turning 180. around the input shaft with the specs. of shaft positioning code "H".
(注1) 18号框需安装两个法兰, 所以没有设定轴位置标记 "M".
如果是轴位置标记为 "H" 的机型, 只要将其以输入轴为中心旋转180° 即可使用。

List of Models of AF2F Type (with Concentric Solid shaft)
AF2F型号(同心中实轴)的标准机型一览表

Backlash 1 arcmin·3 arcmin specs.
1分·3分背隙规格

Type 型号	Capacity of motor 马达对应功率	Frame No. 框号	Output Shaft Positioning 输出轴位置	Reduction Ratio 减速比	Precision 精度
Z-Type Reducer Z型减速机 AF2FZ Concentric Solid Shaft 同心中实轴	100W	18	(注1) (Note1) H	1/10 1/15 1/20 1/25	H(1 arcmin) H(1分)
			F	1/30 1/40 1/50 1/60 1/75 1/90 1/120	M(3 arcmin) M(3分)
	200W	22	H	1/10 1/15 1/20 1/25	H(1 arcmin) H(1分)
			M	1/30 1/40 1/50 1/60	M(3 arcmin) M(3分)
			F		
	400W	28	H	1/10 1/15 1/20 1/25	H(1 arcmin) H(1分)
			M	1/30 1/40 1/50 1/60	M(3 arcmin) M(3分)
			F		
	750W	32	H	1/10 1/15 1/20 1/25	H(1 arcmin) H(1分)
			M	1/30 1/40 1/50 1/60	M(3 arcmin) M(3分)
F					
1000W	32	H	1/10 1/15 1/20 1/25	H(1 arcmin) H(1分)	
		M	1/30 1/40 1/50 1/60	M(3 arcmin) M(3分)	
		F			
2000W	40	H	1/10 1/15 1/20 1/25	H(1 arcmin) H(1分)	
		M	1/30 1/40 1/50 1/60	M(3 arcmin) M(3分)	
		F			

Z-Type Reducer
Z型减速机
Backlash spec of 1 arcmin / 3 arcmin
背隙为 1分 / 3分
规格
Low Backlash spec.
低背隙规格
Position servomotor attached
带定位伺服马达
IPM servomotor attached
带IPM伺服马达

Hollow Shaft
中空轴
Solid Shaft
中实轴
Right Angle Shaft
直角轴
Parallel Shaft
平行轴

Machine Model Line-up
机型构成
Performance List
Dimension Diagram
性能表·尺寸图
Option
客户自选项
Technical Information
技术资料

Standard Model Lineup

Z-Type Reducer

标准机型一览表 Z型减速机

Low Backlash specs 低背隙规格

type AF2S/AFS ● AF2S/AFS型号
type AF2F/AFF ● AF2F/AFF型号

※ Refer to page 10 11 for the machine line-up of 1 arcmin / 3 arcmin Accuracy Specs
※ 低背隙规格(精度为30分~)机型一览表请参见P.12~13



In the type AF2S and AF2F, since the output shaft details of the products with the code H and M(backlash 1 / 3 arcmin) are different from that of the products with the code L(low backlash specs), please confirm it by the dimension diagram.
AF2S、AF2F型号的精度标号为H·M(背隙为1分·3分)的产品与精度标号为L(低背隙规格)的产品之间输出轴有微妙的不同,详细数据请在尺寸图上确认。

List of Models of AF2S/AFS Type (with Hollow Shaft) AF2S/AFS型号(中空轴)的标准机型一览表

Low Backlash specs 低背隙规格

Type 型号	Capacity of motor 马达对应功率	Frame No. 框号	Reduction Ratio 减速比	Precision 精度	
Z-Type Reducer AF2SZ Concentric Hollow Shaft (1/5 ~ 1/60)	100W	20	1/10 1/15 1/20 1/25 1/30 1/40 1/50 1/60	Low Backlash 低背隙	
			200W	25	1/10 1/15 1/20 1/25 1/30 1/40 1/50 1/60
	400W	30			1/5 1/7.5 1/10 1/12 1/15 1/20 1/25 1/30 1/40 1/50 1/60
			750W	35	1/5 1/7.5 1/10 1/12 1/15 1/20 1/25 1/30 1/40 1/50 1/60
	2000W	45			1/5 1/7.5 1/10 1/12 1/15 1/20 1/25 1/30 1/40 1/50 1/60
			Z-Type Reducer AFSZ Hollow Shaft (1/80 ~ 1/240)	100W	25
	200W	30			
				400W	35
	750W	45			
				2000W	55

Z-Type Reducer
Z型减速机

Backlash spec. of 1 arcmin/3 arcmin
背隙1分/3分规格

Low Backlash specs
低背隙规格

Position servomotor attached
带定位伺服马达

IPM servomotor attached
带IPM伺服马达

Hollow Shaft
中空轴

Solid Shaft
中实轴

Right Angle Shaft
直角轴

Parallel Shaft
平行轴

Machine Model Line-up
机种构成

Performance List Dimension Diagram
性能表·尺寸图

Option
客户自选项

Technical Information
技术资料



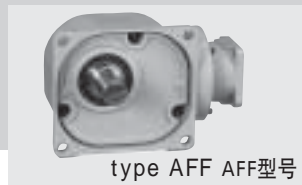
type AF2S AF2S型号



type AFS AFS型号



type AF2F AF2F型号



type AFF AFF型号

※Refer to page 10-11 for the machine line-up of 1 arcmin / 3 arcmin Accuracy Specs
※低背隙规格(精度为30分~)机型一览表请参见P.10-11



In the type AF2S and AF2F, since the output shaft details of the products with the code H and M(backlash 1 / 3 arcmin) are different from that of the products with the code L(low backlash specs), please confirm it by the dimension diagram.
AF2S、AF2F型号的精度标号为H、M(背隙为1分、3分)的产品与精度标号为L(低背隙规格)的产品之间输出轴有微妙的不同,详细数据请在尺寸图上确认。

List of Models of AF2F/AFF Type (with Solid Shaft)
AF2F/AFF型号(中实轴)的标准机型一览表

Low Backlash specs 低背隙规格

Type 型号	Capacity of motor 马达对应功率	Frame No. 框号	Output Shaft Positioning 输出轴位置	Reduction Ratio 减速比	Precision 精度
Z-Type Reducer Z型减速机 AF2FZ Concentric Solid Shaft 同心中实轴 (1/5 ~ 1/60)	100W	18	L	1/10 1/15 1/20 1/25 1/30 1/40 1/50 1/60	Low Backlash 低背隙
			R		
			T		
	200W	22	L	1/10 1/15 1/20 1/25 1/30 1/40 1/50 1/60	Low Backlash 低背隙
			R		
			T		
	400W	28	L	1/10 1/7.5 1/10 1/12 1/15 1/20 1/25 1/30 1/40 1/50 1/60	Low Backlash 低背隙
			R		
			T		
	750W	32	L	1/10 1/7.5 1/10 1/12 1/15 1/20 1/25 1/30 1/40 1/50 1/60	Low Backlash 低背隙
			R		
			T		
2000W	40	L	1/10 1/7.5 1/10 1/12 1/15 1/20 1/25 1/30 1/40 1/50 1/60	Low Backlash 低背隙	
		R			
		T			
Z-Type Reducer Z型减速机 AFFZ Solid Shaft 中实轴 (1/80 ~ 1/240)	100W	22	L	1/80 1/100 1/120 1/160 1/200 1/240	Low Backlash 低背隙
			R		
			T		
	200W	28	L	1/80 1/100 1/120 1/160 1/200 1/240	Low Backlash 低背隙
			R		
			T		
	400W	32	L	1/80 1/100 1/120 1/160 1/200 1/240	Low Backlash 低背隙
			R		
			T		
	750W	40	L	1/80 1/100 1/120 1/160 1/200 1/240	Low Backlash 低背隙
			R		
			T		
2000W	40	L	1/10 1/7.5 1/10 1/12 1/15 1/20 1/25 1/30 1/40 1/50 1/60	Low Backlash 低背隙	
		R			
		T			

Z-Type Reducer
Z型减速机
Backlash spec of 1 arcmin / 3 arcmin 背隙 1分 / 3分规格
Low Backlash Specs 低背隙规格
Position servomotor attached 带定位伺服马达
IPM servomotor attached 带IPM伺服马达

Hollow Shaft 中空轴
Solid Shaft 中实轴
Right Angle Shaft 直交轴
Parallel Shaft 平行轴

Machine Model Line-up 機種构成
Performance List 性能表
Dimension Diagram 尺寸图
Option 客户自选项
Technical Information 技术资料

Standard Model Lineup

Z-Type Reducer

标准机型 一览表 Z型减速机

Low Backlash specs
低背隙规格

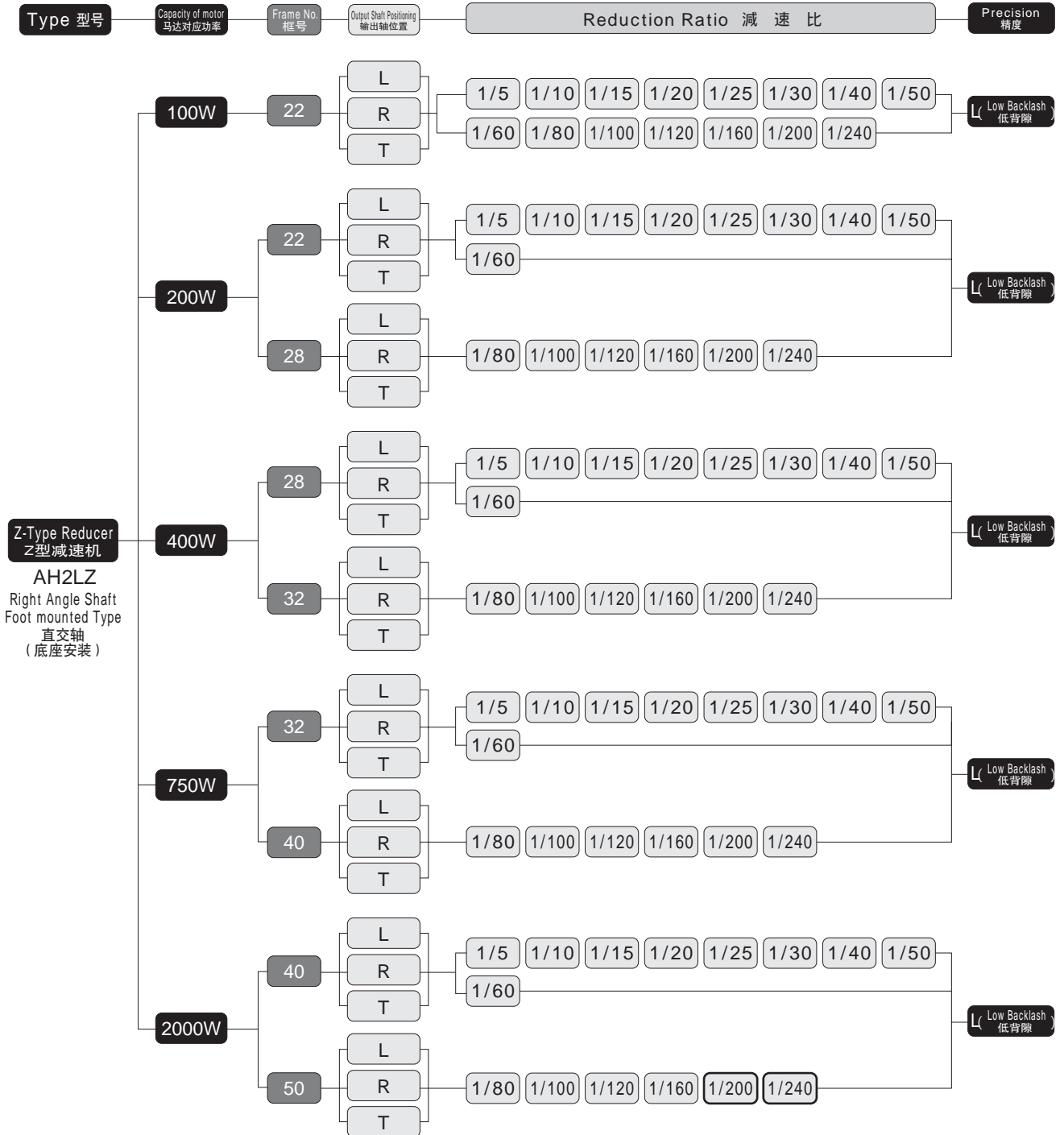
type AH2L
●AH2L型号



※ Accuracy specs. of 1 arcmin / 3 arcmin is not available in Type AH2L.
※ AH2L型号中没有精度为1分·3分规格的产品。

List of Models of AH2L Type (with Right Angle Shaft) AH2L型号(直交轴)的标准机型 一览表

Low Backlash specs 低背隙规格



Z-Type Reducer
Z型减速机
Backlash spec. of
1 arcmin/3 arcmin
背隙1分·3分
规格
Low Backlash
specs
低背隙规格
Position servomotor
attached
带定位伺服马达
IPM servomotor
attached
带IPM伺服马达

Hollow Shaft
中空轴
Solid Shaft
中实轴
Right Angle Shaft
直交轴
Parallel Shaft
平行轴

Machine Model
Line-up
机种构成
Performance List
Dimension Diagram
性能表·尺寸图
Option
客户自选项
Technical
Information
技术资料

Standard Model Lineup

Z-Type Reducer

标准机型一览表 Z型减速机

Low Backlash specs 低背隙规格

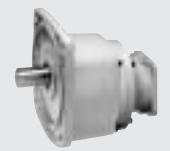
type AG3L/AG3K/AG3F
● AG3L/AG3K/AG3F型号



type AG3L
AG3L型号



type AG3K
AG3K型号



type AG3F
AG3F型号

Standard Model Lineup
标准机型一览表

Z-Type Reducer
Z型减速机
Backlash spec of 1 arcmin / 3 arcmin
背隙 1分 / 3分规格
Low Backlash spec
低背隙规格
Position servomotor attached
带定位伺服马达
IPM servomotor attached
带IPM伺服马达

Hollow Shaft
中空轴
Solid Shaft
中实轴
Right Angle Shaft
直角轴
Parallel Shaft
平行轴

Machine Model Line-up
机种构成
Performance List
Dimension Diagram
性能表 尺寸图
Option
客户自选项
Technical Information
技术资料

※ Accuracy specs. of 1 arcmin / 3 arcmin is not available in Type AH2L.
※ AH2L型号中没有精度为1分·3分规格的产品。

List of Models of AG3L/AG3K/AG3F Type (with Parallel Shaft) AG3L/AG3K/AG3F型号(平行轴)的标准机型一览表

Low Backlash specs 低背隙规格

Type 型号	Capacity of motor 马达对应功率	Frame No. 框号	Reduction Ratio 减速比								Precision 精度
Z-Type Reducer Z型减速机 AG3LZ Parallel Shaft Foot mounted Type (平行轴 底座安装)	100W	18	1/5	1/10	1/15	1/20	1/25	1/30	1/40	1/50	Low Backlash 低背隙
		22	1/60	1/80	1/100	1/120	1/160	1/200			
	200W	18	1/5	1/10	1/15	1/20	1/25				Low Backlash 低背隙
		22	1/30	1/40	1/50	1/60	1/80				
		28	1/100	1/120	1/160	1/200					
	400W	22	1/5	1/10	1/15	1/20	1/25				Low Backlash 低背隙
		28	1/30	1/40	1/50	1/60	1/80				
		32	1/100	1/120	1/160	1/200					
	750W	28	1/5	1/10	1/15	1/20	1/25				Low Backlash 低背隙
		32	1/30	1/40	1/50	1/60	1/80				
		40	1/100	1/120	1/160	1/200					
	2000W	32	1/5	1/10	1/15	1/20	1/25				Low Backlash 低背隙
40		1/30	1/40	1/50	1/60	1/80					
50		1/100	1/120	1/160	1/200						
Z-Type Reducer Z型减速机 AG3KZ Parallel Shaft Flange mounted type (平行轴 法兰安装) (Frames 18 to 32) (18框~32框)	100W	18	1/5	1/10	1/15	1/20	1/25	1/30	1/40	1/50	Low Backlash 低背隙
		22	1/60	1/80	1/100	1/120	1/160	1/200			
	200W	18	1/5	1/10	1/15	1/20	1/25				Low Backlash 低背隙
		22	1/30	1/40	1/50	1/60	1/80				
		28	1/100	1/120	1/160	1/200					
	400W	22	1/5	1/10	1/15	1/20	1/25				Low Backlash 低背隙
		28	1/30	1/40	1/50	1/60	1/80				
		32	1/100	1/120	1/160	1/200					
	750W	28	1/5	1/10	1/15	1/20	1/25				Low Backlash 低背隙
		32	1/30	1/40	1/50	1/60	1/80				
	2000W	32	1/5	1/10	1/15	1/20	1/25				Low Backlash 低背隙
	Z-Type Reducer Z型减速机 AG3FZ Parallel Shaft Flange mounted type (平行轴 法兰安装) (Frames 40 to 50) (40框~50框)	750W	40	1/100	1/120	1/160	1/200				Low Backlash 低背隙
2000W		40	1/30	1/40	1/50	1/60	1/80			Low Backlash 低背隙	
		50	1/100	1/120	1/160	1/200					