



Parallel Shaft

GTR-L Series Gearmotor

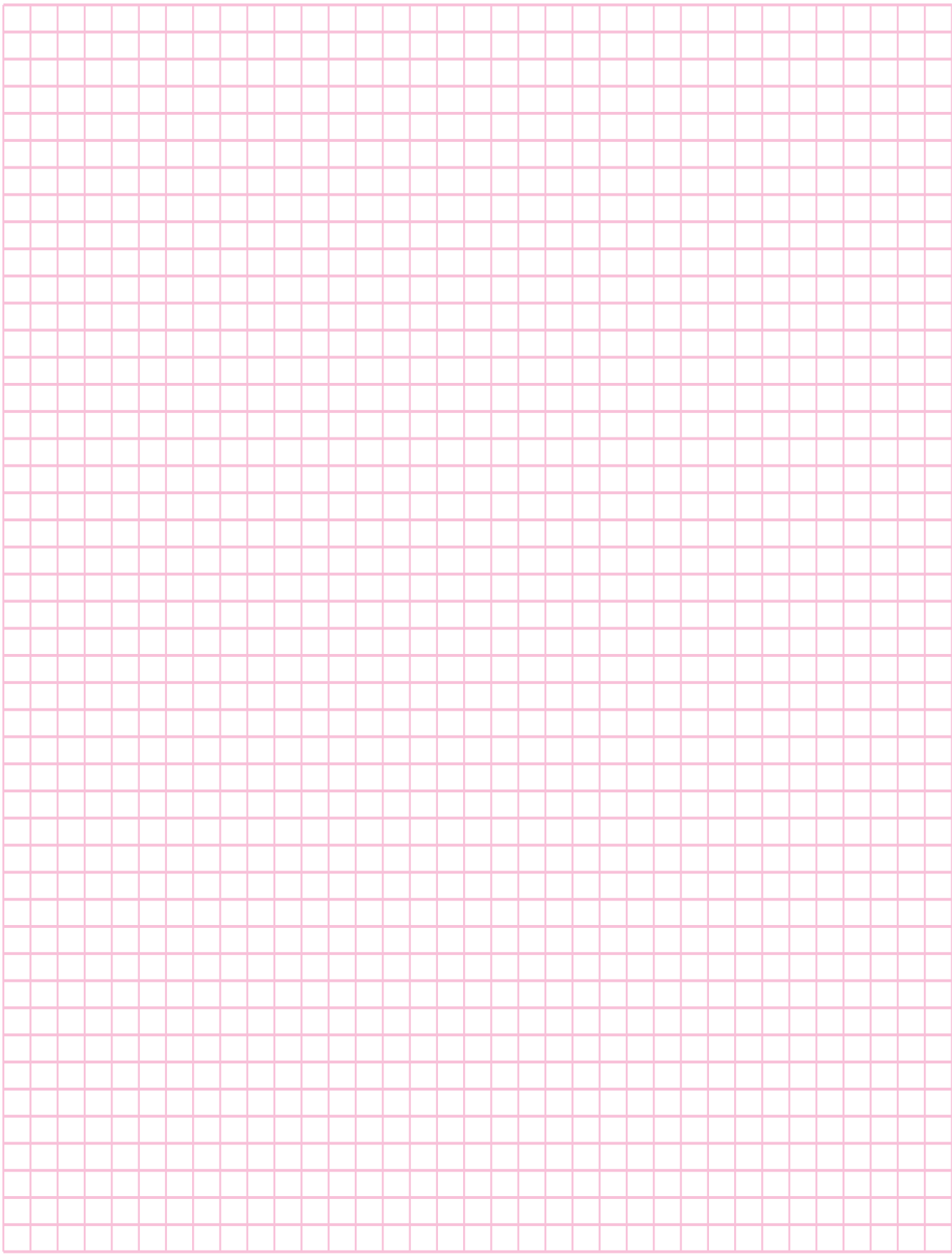
Model and Type Designation Standard Model Lineup

**GTR-L
Series**

**G
Type**

Parallel Shaft

Gearmotor/Gearmotor with Brake/Reversible Gearmotor	
Model and Type Designation/Standard Model Lineup	P. D5
3-phase Performance Table/Dimension Diagram	P. D9
1-phase Performance Table/Dimension Diagram	P. D19
Speed Control Gearmotor/Speed Control Gearmotor with Brake	
Model and Type Designation/Standard Model Lineup	P. D33
1-phase Performance Table/Dimension Diagram	P. D37



Parallel Shaft Performance Table/ Dimension

Gearmotor with Brake

Water-resistant Gearmotor with Brake

Speed Control Gearmotor

Gearmotor with Clutch /Brake

GT-Type Gearmotor with Brake

Right Angle Shaft Performance Table/ Dimension

Gearmotor with Brake

With Water-resistant Brake Motor

Speed Control Gearmotor

Concentric Hollow Shaft Concentric Solid Shaft Performance Table/ Dimension

Gearmotor with Brake

With Water-resistant Brake Motor

Speed Control Gearmotor

Parallel Shaft GTR-L Series Performance Table/ Dimension

Reversible Gearmotor with Brake

Speed Control Gearmotor with Brake

Technical Information

Standard Motors

Cautions for Safety

Option



Parallel Shaft

Gearmotor Gearmotor with Brake Reversible gearmotor (1-Phase only)

GTR-L
Series

G
Type

Parallel Shaft

Model and Type Designation Standard Model Lineup

Motor Part	Number of phase	3-Phase	1-Phase
	Capacity	15W ~ 40W	6W ~ 40W
	Power Source	3 Rated Power Source 200V 50/60Hz, 220V/60Hz	100V 50/60Hz
	Insulation Classification	Class E	Class E
	Starting Method	Direct start	Capacitor Start
	Protective cooling Method	Totally Enclosed	
	Number of Pole	4	
Rating	Continuous Rating		
Speed Reduction Part	Reduction Method	Spur gear and Helical gear	
	Lubrication	Grease Lubrication	
	Output Shaft	New JIS Key(JIS 1301-1976 class)	
	Output Shaft Material	S43C	
Case Material	Aluminium die-cast		
Ambient Conditions	Ambient Temperature	- 10 ~ 40	
	Ambient Humidity	85% max.(without any dew condensation)	
	Altitude	1,000m max.	
	Environment	Well ventilated place free from corrosive gas, explosive gas vapor and/or dust.	
	Installation Location	Indoors	
Painting	Painting Method	Anion painting, Acrylic paint	
	Painting Color	Grey(Mansel code: 9B6/0.5)	
Mounting Direction	No restriction in the mounting angle.(horizontally, vertically or heeling angle)		

Model and Type Designation L Series(Parallel Shaft)

GTR-L Series Gearmotor/Brake Motor/Reversible Gearmotor are classified by codes as shown below. Specify these codes in your inquiry and order.

Type			Frame Number	Shaft Arrangement	Reduction Ratio	Motor Capacity	Option	Auxiliary Mark	Spec. Designation
L	G		10	M	3	S06			
F	G	N	15	M	240	T25	W	C	X
F	G	R	15	B	360	S40			

Classification by Mount Form	L : Foot Mount
	F : Flange Mount
Series Name	G : Parallel Shaft
Classification by Motor Type	Blank : With Motor
	N : With Brake Motor
	R : Reversible(1-phase only)
Frame No. and Diameter of Output shaft	Output Shaft Diameter
Bearing type	M : Metal type
	B : Bearing type
Reduction Ratio	3 : 1 / 3 ~ 360 : 1 / 360
Motor Designation and Capacity	T15 : 3-phase 15W
	T25 : 3-phase 25W
	T40 : 3-phase 40W
	S06 : 1-phase 6W
	S10 : 1-phase 10W
	S15 : 1-phase 15W
	S25 : 1-phase 25W
S40 : 1-phase 40W	
Option <small>Note: 1-ph 6W type is not available for high voltage.</small>	Blank : Standard Specifications 3-phase: 200V / 50Hz, 200V / 60Hz, 220V / 60Hz 1-phase: 100V / 50Hz, 100V / 60Hz
	W : High Voltage 3-phase: 380V / 50Hz, 400V / 50Hz, 400V / 60Hz, 440V / 60Hz 1-phase: 200V / 50Hz, 200V / 60Hz(except for 6W)
	T : T-Type Terminal Box
	K : K-Type Terminal Box
	C : Rectifier built-in terminal box for brake motor
Auxiliary Mark	Blank : Standard Specs.
	X : Mark for Additional Specs.
Spec. Designation <small>Note: Spec. Designation does not appear on the product type designation in the nameplate. It is specified on the additional numbers in the nameplate.</small>	Position indicator for lead-wire, terminal box Refer to the indication mark list in P. E54 for details.

Parallel Shaft Performance Table/ Dimension

Gearmotor with Brake

Water-resistant Gearmotor with Brake

Speed Control Gearmotor

Gearmotor with Clutch /Brake

GT-Type Gearmotor with Brake

Right Angle Shaft Performance Table/ Dimension

Gearmotor with Brake

With Water-resistant Brake Motor

Speed Control Gearmotor

Concentric Hollow Shaft Performance Table/ Dimension

Gearmotor with Brake

With Water-resistant Brake Motor

Speed Control Gearmotor

Parallel Shaft GTR-L Series Performance Table/ Dimension

Reversible Gearmotor with Brake

Speed Control Gearmotor with Brake

Technical Information

Standard Motors

Cautions for Safety

Option

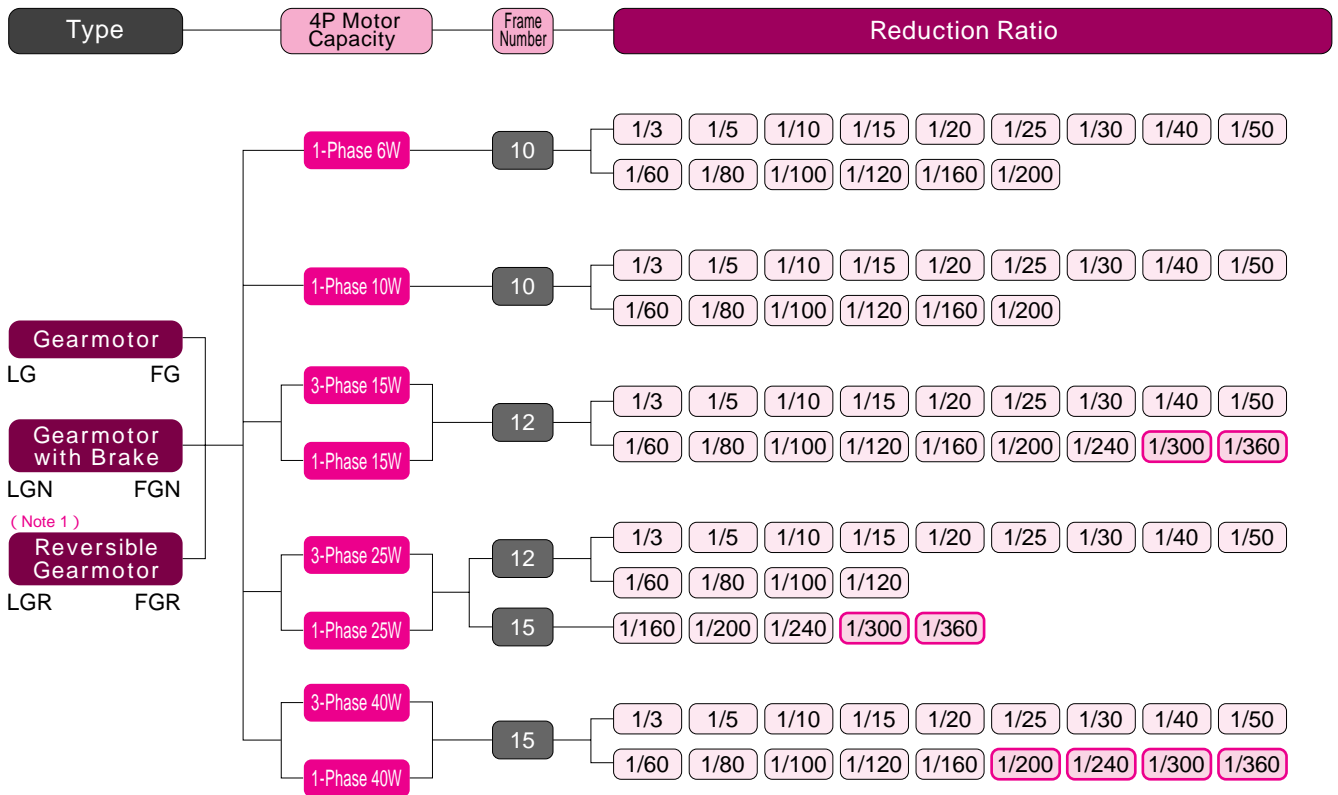
Standard Model Lineup



Foot Mount type



Flange Mount type



Note 1) Reversible motors are available only in single-phase.
 2) **Orange color bold line** The models enclosed with orange color bold line are low torque type. Special care should be given to the allowable torque in the performance table.

- Parallel Shaft Performance Table/ Dimension
- Gearmotor with Brake
- Water-resistant Gearmotor with Brake
- Speed Control Gearmotor
- Gearmotor with Clutch/Brake
- GT-Type Gearmotor with Brake
- Right Angle Shaft Performance Table/ Dimension
- Gearmotor with Brake
- With Water-resistant Brake Motor
- Speed Control Gearmotor
- Concentric Hollow Shaft Performance Table/ Dimension
- Gearmotor with Brake
- With Water-resistant Brake Motor
- Speed Control Gearmotor
- Parallel Shaft GTR-L Series Performance Table/ Dimension
- Reversible Gearmotor with Brake
- Speed Control Gearmotor with Brake
- Technical Information
- Standard Motors
- Cautions for Safety
- Option



Parallel Shaft

Gearmotor Gearmotor with Brake

Performance Table Dimension diagram


GTR-L
Series

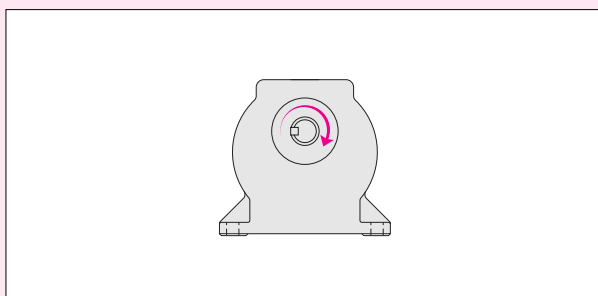
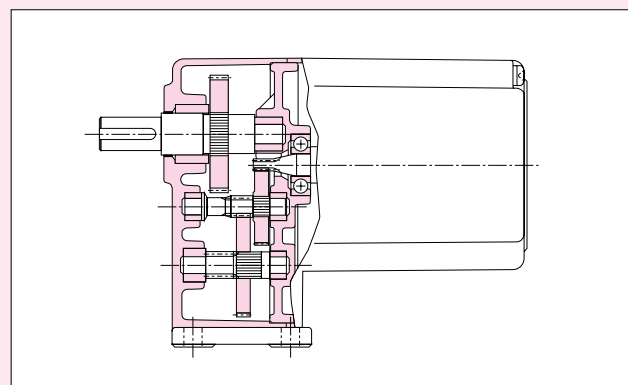
G
Type
Parallel Shaft

3-Phase

【Remarks】

The output rotation speed is the value corresponds to the motor synchronous speed and the nominal reduction ratio.

The Shaded areas  in the performance table shows that in case gearmotors are wired (forward rotation) according to the diagram shown on [page E30](#), the shaft rotates clock wise when viewing from output side. (Refer to the diagram shown below.)



GTR-L Series Gearmotor Gearmotor with Brake

G-Type[Parallel Shaft] 3-Phase 15W

Motor Specs.	Capacity	Motor Capacity Designation	Voltage (V)	Frequency (Hz)	Frame No.	Rated Current (A)	Rated Rotation Speed (rpm)	Insulation Classification	Protective system
Standard Voltage (Continuous Rated 4 Poles)	15W	T15	200/200/220	50/60/60	12	0.14/0.13/0.13	1350/1550/1600	E	Totally Enclosed
Double Voltage (Continuous Rated 4 Poles)		T15W	380/400/400/440	50/50/60/60	12	0.11/0.12/0.10/0.11	1400/1400/1700/1700		

Motor Capacity	Frame No.	Reduction Ratio	Output Shaft Rotation Speed (rpm)		Output Shaft Allowable Torque		Output Shaft Allowable O.H.L		Page, Diagram No. of the Outer Dimension Diagram, Round Weight			
									Gearmotor		Gearmotor with Brake	
			50Hz	60Hz	N•m	kgf•m	N	kgf	LG	FG	LGN	FGN
3-phase 15W	12	1/ 3	500	600	0.20	0.02	98	10	P.D11 Fig.D-1 2kg	P.D11 Fig.D-2 2kg	P.D11 Fig.D-3 2kg	P.D11 Fig.D-4 2kg
		1/ 5	300	360	0.29	0.03	196	20				
		1/ 10	150	180	0.69	0.07	294	30				
		1/ 15	100	120	0.98	0.10	343	35				
		1/ 20	75	90	1.27	0.13	392	40				
		1/ 25	60	72	1.67	0.17	441	45				
		1/ 30	50	60	1.96	0.20	490	50				
		1/ 40	37.5	45	2.65	0.27	490	50				
		1/ 50	30	36	3.33	0.34	490	50				
		1/ 60	25	30	3.92	0.40	490	50				
		1/ 80	18.8	22.5	5.00	0.51	490	50				
		1/100	15	18	6.27	0.64	490	50				
		1/120	12.5	15	7.45	0.76	490	50				
		1/160	9.4	11.2	9.80	1.0	490	50				
		1/200	7.5	9	12.7	1.3	490	50				
		1/240	6.3	7.5	14.7	1.5	490	50				
* 1/300	5	6	14.7	1.5	490	50						
* 1/360	4.2	5	14.7	1.5	490	50						

Note) The allowable O.H.L indicated are the values in the central position of the output shaft.
 The models marked with * are low troque type. Be sure to refer to the allowable torque rating in the performance table.
 Be sure to read the cautions stated on Page D9.

- Parallel Shaft Performance Table/ Dimension
- Gearmotor with Brake
- Water-resistant Gearmotor with Brake
- Speed Control Gearmotor
- Gearmotor with Clutch /Brake
- GT-Type Gearmotor with Brake
- Right Angle Shaft Performance Table/ Dimension
- Gearmotor with Brake
- With Water-resistant Brake Motor
- Speed Control Gearmotor
- Concentric Hollow Shaft Concentric Solid Shaft Performance Table/ Dimension
- Gearmotor with Brake
- With Water-resistant Brake Motor
- Speed Control Gearmotor
- Parallel Shaft GTR-L Series Performance Table/ Dimension
- Reversible Gearmotor with Brake
- Speed Control Gearmotor with Brake
- Technical Information
- Standard Motors
- Cautions for Safety
- Option

Model Code P.D6	Lead-Wire/Terminal Box Position Mark P.E54	Option P.E110
--------------------	--	------------------



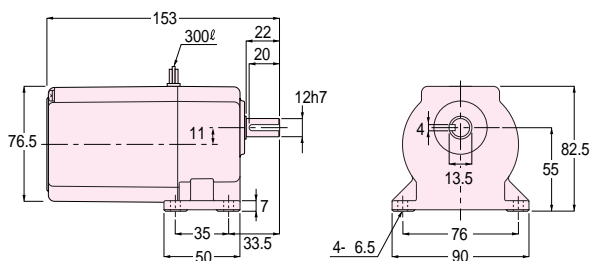
Foot Mount type



Flange Mount type

Foot Mount Type Gearmotor

Fig.D-1 LG-12_B-3 ~ 360-T15
LG-12_M-3 ~ 360-T15W

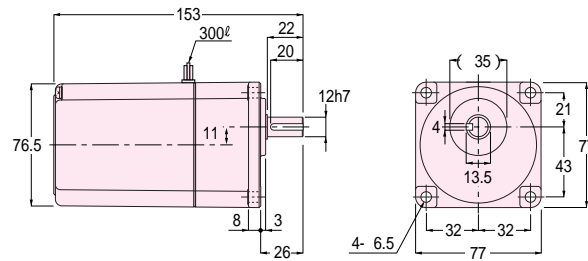


[Round Weight 2 kg]

CAD Data: LG-12M-T15
LG-12M-T15W

Flange Mount Type Gearmotor

Fig.D-2 FG-12_B-3 ~ 360-T15
FG-12_M-3 ~ 360-T15W

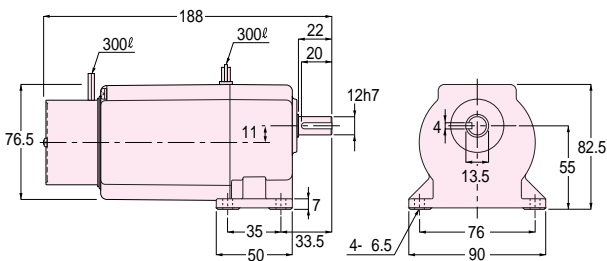


[Round Weight 2 kg]

CAD Data: FG-12M-T15
FG-12M-T15W

Foot Mount Type Gearmotor with Brake

Fig.D-3 LGN-12_B-3 ~ 360-T15
LGN-12_M-3 ~ 360-T15W

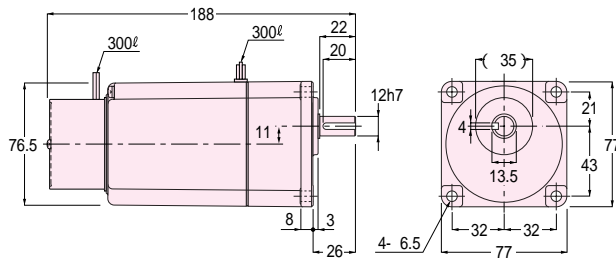


[Round Weight 2 kg]

CAD Data: LGN-12M-T15
LGN-12M-T15W

Flange Mount Type Gearmotor with Brake

Fig.D-4 FGN-12_B-3 ~ 360-T15
FGN-12_M-3 ~ 360-T15W



[Round Weight 2 kg]

CAD Data: FGN-12M-T15
FGN-12M-T15W

Note) Since the figure in the parenthesis is the one with black scale, add more than 0.5mm to that figure for the diameter of the connecting hole. In the CAD data, the file name is common to the both type, M(Metal type) and B(Bearing type).

Parallel Shaft Performance Table/
Dimension

Gearmotor with Brake

Water-resistant Gearmotor with Brake

Speed Control Gearmotor

Gearmotor with Clutch /Brake

GT-Type Gearmotor with Brake

Right Angle Shaft Performance Table/
Dimension

Gearmotor with Brake

With Water-resistant Brake Motor

Speed Control Gearmotor

Concentric Hollow Shaft Performance Table/
Dimension

Gearmotor with Brake

With Water-resistant Brake Motor

Speed Control Gearmotor

Parallel Shaft GTR-L Series Performance Table/
Dimension

Reversible Gearmotor with Brake

Speed Control Gearmotor with Brake

Technical Information

Standard Motors

Cautions for Safety

Option

Gearmotor Gearmotor with Brake

G-Type[Parallel Shaft] 3-Phase 25W

Motor Specs.	Capacity	Motor Capacity Designation	Voltage (V)	Frequency (Hz)	Frame No.	Rated Current (A)	Rated Rotation Speed (rpm)	Insulation Classification	Protective system
Standard Voltage (Continuous Rated 4 Poles)	25W	T25	200/200/220	50/60/60	12	0.21/0.19/0.19	1350/1550/1600	E	Totally Enclosed
					15	0.18/0.17/0.17	1350/1550/1600		
Double Voltage (Continuous Rated 4 Poles)		T25W	380/400/400/440	50/50/60/60	12	0.11/0.12/0.11/0.12	1350/1400/1600/1650		
					15	0.09/0.09/0.09/0.09	1300/1350/1550/1600		

Motor Capacity	Frame No.	Reduction Ratio	Output Shaft Rotation Speed (rpm)		Output Shaft Allowable Torque		Output Shaft Allowable O.H.L		Page, Diagram No. of the Outer Dimension Diagram, Round Weight			
			50Hz	60Hz	N•m	kgf•m	N	kgf	Gearmotor		Gearmotor with Brake	
									LG	FG	LGN	FGN
3-phase 25W	12	1/ 3	500	600	0.29	0.03	98	10	P.D13 Fig.D-5 2kg	P.D13 Fig.D-7 2kg	P.D14 Fig.D-9 2.5kg	P.D14 Fig.D-11 2.5kg
		1/ 5	300	360	0.59	0.06	196	20				
		1/ 10	150	180	1.08	0.11	294	30				
		1/ 15	100	120	1.67	0.17	343	35				
		1/ 20	75	90	2.25	0.23	392	40				
		1/ 25	60	72	2.74	0.28	441	45				
		1/ 30	50	60	3.33	0.34	490	50				
		1/ 40	37.5	45	4.41	0.45	490	50				
		1/ 50	30	36	5.49	0.56	490	50				
		1/ 60	25	30	6.66	0.68	490	50				
		1/ 80	18.8	22.5	8.43	0.86	490	50				
		1/100	15	18	10.8	1.1	490	50				
	1/120	12.5	15	12.7	1.3	490	50					
	15	1/160	9.4	11.2	16.7	1.7	686	70	P.D13 Fig.D-6 2.5kg	P.D13 Fig.D-8 2.5kg	P.D14 Fig.D-10 3kg	P.D14 Fig.D-12 3kg
		1/200	7.5	9	20.6	2.1	686	70				
		1/240	6.3	7.5	25.5	2.6	686	70				
		* 1/300	5	6	26.5	2.7	686	70				
		* 1/360	4.2	5	26.5	2.7	686	70				

Note) The allowable O.H.L indicated are the values in the central position of the output shaft.
 The models marked with * are low troque type. Be sure to refer to the allowable torque rating in the performance table.
 Be sure to read the cautions stated on Page D9.

- Parallel Shaft Performance Table/ Dimension
- Gearmotor with Brake
- Water-resistant Gearmotor with Brake
- Speed Control Gearmotor
- Gearmotor with Clutch /Brake
- GT-Type Gearmotor with Brake
- Right Angle Shaft Performance Table/ Dimension
- Gearmotor with Brake
- With Water-resistant Brake Motor
- Speed Control Gearmotor
- Concentric Hollow Shaft Concentric Solid Shaft Performance Table/ Dimension
- Gearmotor with Brake
- With Water-resistant Brake Motor
- Speed Control Gearmotor
- Parallel Shaft GTR-L Series Performance Table/ Dimension
- Reversible Gearmotor with Brake
- Speed Control Gearmotor with Brake
- Technical Information
- Standard Motors
- Cautions for Safety
- Option

Model Code P.D6	Lead-Wire/Terminal Box Position Mark P.E54	Option P.E110
--------------------	--	------------------

Gearmotor

G-Type(Parallel Shaft) 3-Phase 25W

Foot Mount Type Gearmotor

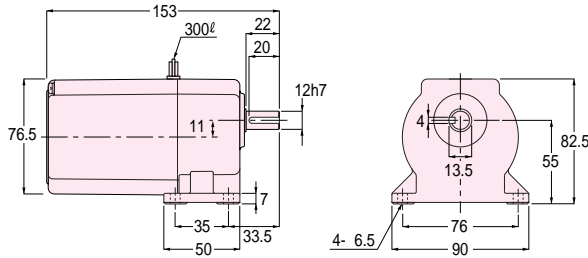


Foot Mount type



Flange Mount type

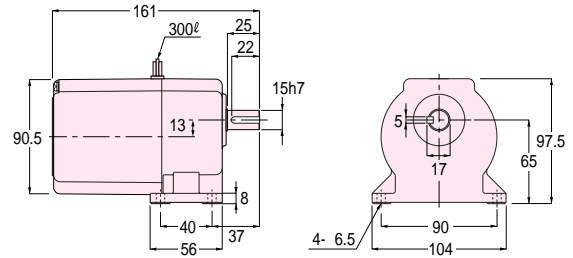
Fig.D-5 LG-12_B^M-3 ~ 120-T25
LG-12_B^M-3 ~ 120-T25W



[Round Weight 2 kg]

CAD Data: LG-12M-T25
LG-12M-T25W

Fig.D-6 LG-15_B^M-160 ~ 360-T25
LG-15_B^M-160 ~ 360-T25W

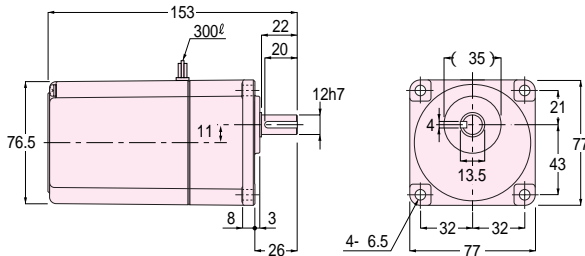


[Round Weight 2.5 kg]

CAD Data: LG-15M-T25
LG-15M-T25W

Flange Mount Type Gearmotor

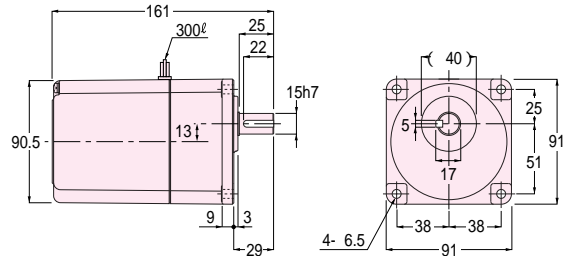
Fig.D-7 FG-12_B^M-3 ~ 120-T25
FG-12_B^M-3 ~ 120-T25W



[Round Weight 2 kg]

CAD Data: FG-12M-T25
FG-12M-T25W

Fig.D-8 FG-15_B^M-160 ~ 360-T25
FG-15_B^M-160 ~ 360-T25W



[Round Weight 2.5 kg]

CAD Data: FG-15M-T25
FG-15M-T25W

Note) Since the figure in the parenthesis is the one with black scale, add more than 0.5mm to that figure for the diameter of the connecting hole. In the CAD data, the file name is common to the both type, M(Metal type) and B(Bearing type).

Parallel Shaft
Performance
Table/
Dimension

Gearmotor
with Brake

Water-
resistant
Gearmotor
with Brake

Speed
Control
Gearmotor

Gearmotor
with Clutch
/Brake

GT-Type
Gearmotor
with Brake

Right Angle Shaft
Performance
Table/
Dimension

Gearmotor
with Brake

With Water-
resistant
Brake Motor

Speed
Control
Gearmotor

Concentric Hollow Shaft
Concentric Solid Shaft
Performance Table/
Dimension

Gearmotor
with Brake

With Water-
resistant
Brake Motor

Speed
Control
Gearmotor

Parallel Shaft
GTR-L Series
Performance
Table/
Dimension

Reversible
Gearmotor
with Brake

Speed
Control
Gearmotor
with Brake

Technical
Information

Standard
Motors

Cautions
for Safety

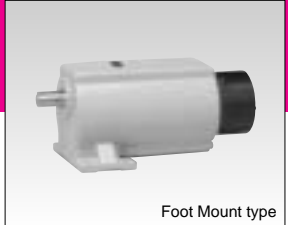
Option

GTR-L Series

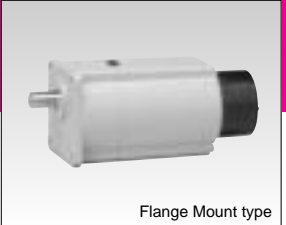
Gearmotor with Brake

G-Type(Parallel Shaft) 3-Phase 25W

Foot Mount Type Gearmotor with Brake



Foot Mount type



Flange Mount type

Parallel Shaft
Performance
Table/
Dimension

Gearmotor
with Brake

Water-
resistant
Gearmotor
with Brake

Speed
Control
Gearmotor

Gearmotor
with Clutch
/Brake

GT-Type
Gearmotor
with Brake

Right Angle Shaft
Performance
Table/
Dimension

Gearmotor
with Brake

With Water-
resistant
Brake Motor

Speed
Control
Gearmotor

Concentric Hollow Shaft
Performance Table/
Dimension

Gearmotor
with Brake

With Water-
resistant
Brake Motor

Speed
Control
Gearmotor

Parallel Shaft
GTR-L Series
Performance
Table/
Dimension

Reversible
Gearmotor
with Brake

Speed
Control
Gearmotor
with Brake

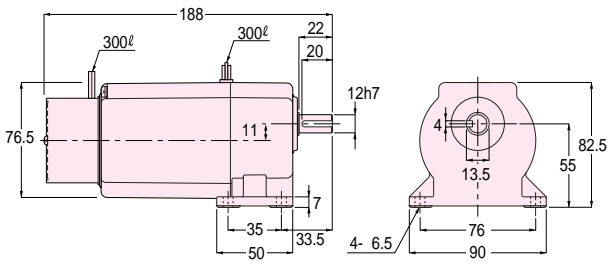
Technical
Information

Standard
Motors

Cautions
for Safety

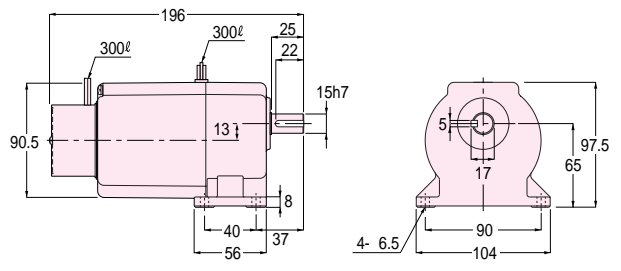
Option

**Fig.D-9 LGN-12_BM-3 ~ 120-T25
LGN-12_BM-3 ~ 120-T25W**



[Round Weight 2.5 kg] CAD Data: LGN-12M-T25
LGN-12M-T25W

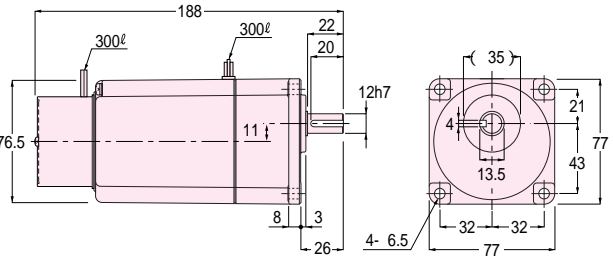
**Fig.D-10 LGN-15_BM-160 ~ 360-T25
LGN-15_BM-160 ~ 360-T25W**



[Round Weight 3 kg] CAD Data: LGN-15M-T25
LGN-15M-T25W

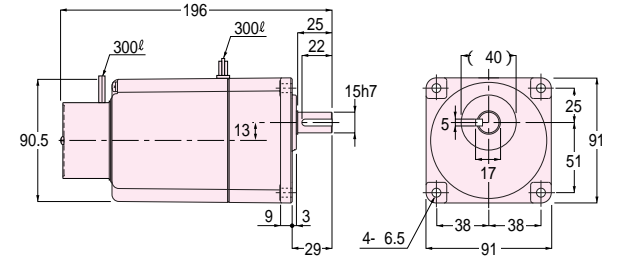
Flange Mount Type Gearmotor with Brake

**Fig.D-11 FGN-12_BM-3 ~ 120-T25
FGN-12_BM-3 ~ 120-T25W**



[Round Weight 2.5 kg] CAD Data: FGN-12M-T25
FGN-12M-T25W

**Fig.D-12 FGN-15_BM-160 ~ 360-T25
FGN-15_BM-160 ~ 360-T25W**



[Round Weight 3 kg] CAD Data: FGN-15M-T25
FGN-15M-T25W

Note) Since the figure in the parenthesis is the one with black scale, add more than 0.5mm to that figure for the diameter of the connecting hole.
In the CAD data, the file name is common to the both type, M(Metal type) and B(Bearing type).

Model Code P.D6	Lead-Wire/Terminal Box Position Mark P.E54	Option P.E110
--------------------	--	------------------

Parallel Shaft
Performance
Table/
Dimension

Gearmotor
with Brake

Water-
resistant
Gearmotor
with Brake

Speed
Control
Gearmotor

Gearmotor
with Clutch
/Brake

GT-Type
Gearmotor
with Brake

Right Angle Shaft
Performance
Table/
Dimension

Gearmotor
with Brake

With Water-
resistant
Brake Motor

Speed
Control
Gearmotor

Concentric Hollow Shaft
Concentric Solid Shaft
Performance Table/
Dimension

Gearmotor
with Brake

With Water-
resistant
Brake Motor

Speed
Control
Gearmotor

Parallel Shaft
GTR-L Series
Performance
Table/
Dimension

Reversible
Gearmotor
with Brake

Speed
Control
Gearmotor
with Brake

Technical
Information

Standard
Motors

Cautions
for Safety

Option

Gearmotor Gearmotor with Brake

G-Type[Parallel Shaft] 3-Phase 40W

Motor Specs.	Capacity	Motor Capacity Designation	Voltage (V)	Frequency (Hz)	Frame No.	Rated Current (A)	Rated Rotation Speed (rpm)	Insulation Classification	Protective system
Standard Voltage (Continuous Rated 4 Poles)	40W	T40	200/200/220	50/60/60	15	0.27/0.26/0.26	1350/1550/1550	E	Totally Enclosed
Double Voltage (Continuous Rated 4 Poles)		T40W	380/400/400/440	50/50/60/60	15	0.13/0.14/0.13/0.14	1300/1350/1550/1600		

Motor Capacity	Frame No.	Reduction Ratio	Output Shaft Rotation Speed (rpm)		Output Shaft Allowable Torque		Output Shaft Allowable O.H.L		Page, Diagram No. of the Outer Dimension Diagram, Round Weight			
			50Hz	60Hz	N•m	kgf•m	N	kgf	Gearmotor		Gearmotor with Brake	
			50Hz	60Hz	N•m	kgf•m	N	kgf	LG	FG	LGN	FGN
3-phase 40W	15	1/ 3	500	600	0.49	0.05	147	15	P.D17 Fig.D-13 3kg	P.D17 Fig.D-14 3kg	P.D17 Fig.D-15 3kg	P.D17 Fig.D-16 3kg
		1/ 5	300	360	0.88	0.09	294	30				
		1/ 10	150	180	1.76	0.18	343	35				
		1/ 15	100	120	2.65	0.27	441	45				
		1/ 20	75	90	3.53	0.36	490	50				
		1/ 25	60	72	4.41	0.45	539	55				
		1/ 30	50	60	5.29	0.54	637	65				
		1/ 40	37.5	45	7.06	0.72	686	70				
		1/ 50	30	36	8.82	0.90	686	70				
		1/ 60	25	30	10.8	1.1	686	70				
		1/ 80	18.8	22.5	13.7	1.4	686	70				
		1/100	15	18	16.7	1.7	686	70				
		1/120	12.5	15	20.6	2.1	686	70				
		1/160	9.4	11.2	26.5	2.7	686	70				
		* 1/200	7.5	9	26.5	2.7	686	70				
		* 1/240	6.3	7.5	26.5	2.7	686	70				
* 1/300	5	6	26.5	2.7	686	70						
* 1/360	4.2	5	26.5	2.7	686	70						

Note) The allowable O.H.L indicated are the values in the central position of the output shaft.
 The models marked with * are low troque type. Be sure to refer to the allowable torque rating in the performance table.
 Be sure to read the cautions stated on Page D9.

- Parallel Shaft Performance Table/ Dimension
- Gearmotor with Brake
- Water-resistant Gearmotor with Brake
- Speed Control Gearmotor
- Gearmotor with Clutch /Brake
- GT-Type Gearmotor with Brake
- Right Angle Shaft Performance Table/ Dimension
- Gearmotor with Brake
- With Water-resistant Brake Motor
- Speed Control Gearmotor
- Concentric Hollow Shaft Concentric Solid Shaft Performance Table/ Dimension
- Gearmotor with Brake
- With Water-resistant Brake Motor
- Speed Control Gearmotor
- Parallel Shaft GTR-L Series Performance Table/ Dimension
- Reversible Gearmotor with Brake
- Speed Control Gearmotor with Brake
- Technical Information
- Standard Motors
- Cautions for Safety
- Option

Model Code P.D6	Lead-Wire/Terminal Box Position Mark P.E54	Option P.E110
--------------------	--	------------------



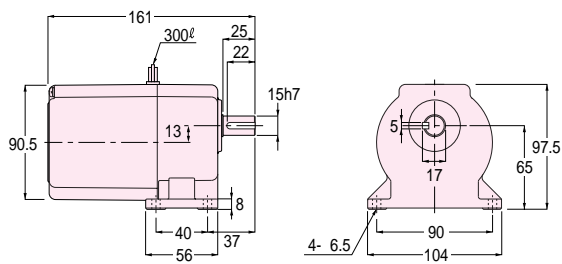
Foot Mount type



Flange Mount type

Foot Mount Type Gearmotor

Fig.D-13 LG-15_B^M-3 ~ 360-T40
LG-15_B^B-3 ~ 360-T40W

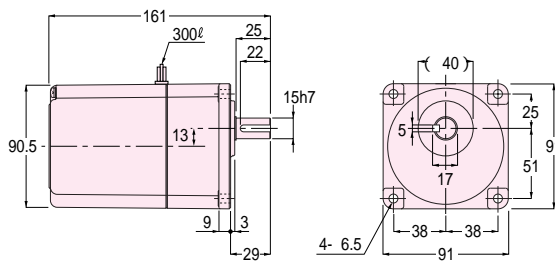


[Round Weight 3 kg]

CAD Data: LG-15M-T40
LG-15M-T40W

Flange Mount Type Gearmotor

Fig.D-14 FG-15_B^M-3 ~ 360-T40
FG-15_B^B-3 ~ 360-T40W

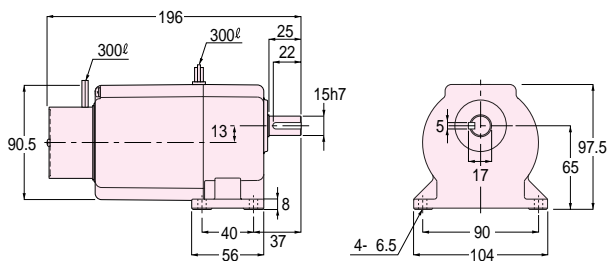


[Round Weight 3 kg]

CAD Data: FG-15M-T40
FG-15M-T40W

Foot Mount Type Gearmotor with Brake

Fig.D-15 LGN-15_B^M-3 ~ 360-T40
LGN-15_B^B-3 ~ 360-T40W

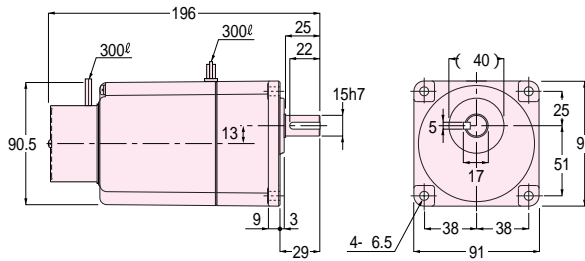


[Round Weight 3 kg]

CAD Data: LGN-15M-T40
LGN-15M-T40W

Flange Mount Type Gearmotor with Brake

Fig.D-16 FGN-15_B^M-3 ~ 360-T40
FGN-15_B^B-3 ~ 360-T40W



[Round Weight 3 kg]

CAD Data: FGN-15M-T40
FGN-15M-T40W

Note) Since the figure in the parenthesis is the one with black scale, add more than 0.5mm to that figure for the diameter of the connecting hole.
In the CAD data, the file name is common to the both type, M(Metal type) and B(Bearing type).

Parallel Shaft
Performance
Table/
Dimension

Gearmotor
with Brake

Water-
resistant
Gearmotor
with Brake

Speed
Control
Gearmotor

Gearmotor
with Clutch
/Brake

GT-Type
Gearmotor
with Brake

Right Angle Shaft
Performance
Table/
Dimension

Gearmotor
with Brake

With Water-
resistant
Brake Motor

Speed
Control
Gearmotor

Concentric Hollow Shaft
Performance Table/
Dimension

Gearmotor
with Brake

With Water-
resistant
Brake Motor

Speed
Control
Gearmotor

Parallel Shaft
GTR-L Series
Performance Table/
Dimension

Reversible
Gearmotor
with Brake

Speed
Control
Gearmotor
with Brake

Technical
Information

Standard
Motors

Cautions
for Safety

Option



Parallel Shaft

Gearmotor Gearmotor with Brake Reversible gearmotor

GTR-L
Series

Performance Table Dimension diagram


G
Type

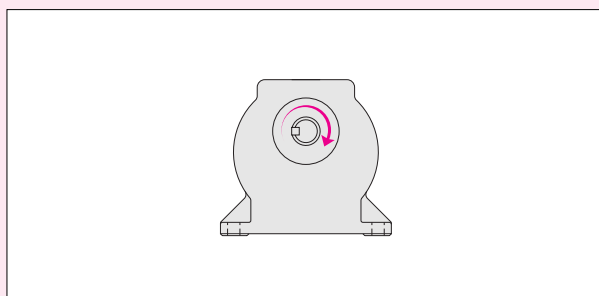
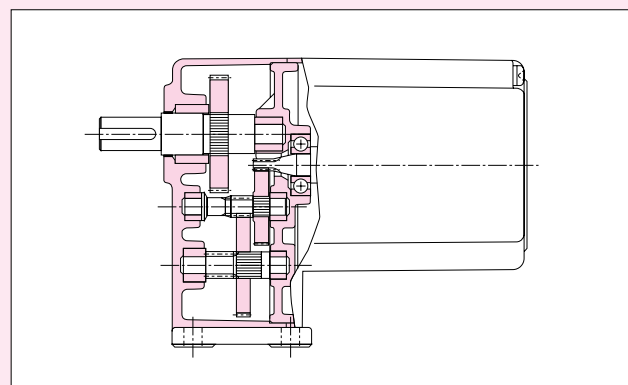
Parallel Shaft

1-Phase

【Remarks】

The output rotation speed is the value corresponds to the motor synchronous speed and the nominal reduction ratio.

The Shaded areas  in the performance table shows that in case gearmotors are wired (forward rotation) according to the diagram shown on [page E30](#), the shaft rotates clock wise when viewing from output side. (Refer to the diagram shown below.)



GTR-L Series Gearmotor • Reversible gearmotor Gearmotor with Brake

G-Type [Parallel Shaft] 1-Phase 6W

Gearmotor/Gearmotor with Brake

Motor Specs.	Capacity	Motor Capacity Designation	Voltage (V)	Frequency (Hz)	Frame No.	Rated Current (A)	Rated Rotation Speed (rpm)	Capacitor (μF)	Insulation Classification	Protective system
Standard Voltage (Continuous Rated 4 Poles)	6W	S06	100/100	50/60	10	0.17/0.17	1300/1600	2.5	E	Totally Enclosed

Reversible gearmotor

Motor Specs.	Capacity	Motor Capacity Designation	Voltage (V)	Frequency (Hz)	Frame No.	Rated Current (A)	Rated Rotation Speed (rpm)	Capacitor (μF)	Insulation Classification	Protective system
Standard Voltage 4 pole, 30min, rating	6W	S06	100/100	50/60	10	0.20/0.25	1300/1600	3.5	E	Totally Enclosed

Motor Capacity	Frame No.	Reduction Ratio	Output Shaft Rotation Speed (rpm)		Output Shaft Allowable Torque		Output Shaft Allowable O.H.L		Page, Diagram No. of the Outer Dimension Diagram, Round Weight			
			50Hz	60Hz	N•m	kgf•m	N	kgf	Gearmotor Reversible gearmotor		Gearmotor with Brake	
									LG•LGR	FG•LGR	LGN	FGN
1-phase 6W	10	1/ 3	500	600	0.078	0.008	59	6	P.D21 Fig.D-17 1.5kg	P.D21 Fig.D-18 1.5kg	P.D21 Fig.D-19 1.5kg	P.D21 Fig.D-20 1.5kg
		1/ 5	300	360	0.098	0.01	78	8				
		1/ 10	150	180	0.294	0.03	137	14				
		1/ 15	100	120	0.392	0.04	206	21				
		1/ 20	75	90	0.490	0.05	245	25				
		1/ 25	60	72	0.686	0.07	274	28				
		1/ 30	50	60	0.784	0.08	314	32				
		1/ 40	37.5	45	1.08	0.11	343	35				
		1/ 50	30	36	1.27	0.13	343	35				
		1/ 60	25	30	1.57	0.16	343	35				
		1/ 80	18.8	22.5	1.96	0.20	343	35				
		1/100	15	18	2.55	0.26	343	35				
		1/120	12.5	15	3.04	0.31	343	35				
1/160	9.4	11.2	4.02	0.41	343	35						
1/200	7.5	9	5.00	0.51	343	35						

Note) The allowable O.H.L indicated are the values in the central position of the output shaft.
Be sure to read the cautions stated on Page D19.

Parallel Shaft Performance Table/
Dimension

Gearmotor with Brake

Water-resistant Gearmotor with Brake

Speed Control Gearmotor

Gearmotor with Clutch/Brake

GT-Type Gearmotor with Brake

Right Angle Shaft Performance Table/
Dimension

Gearmotor with Brake

With Water-resistant Brake Motor

Speed Control Gearmotor

Concentric Hollow Shaft Concentric Solid Shaft Performance Table/
Dimension

Gearmotor with Brake

With Water-resistant Brake Motor

Speed Control Gearmotor

Parallel Shaft GTR-L Series Performance Table/
Dimension

Reversible Gearmotor with Brake

Speed Control Gearmotor with Brake

Technical Information

Standard Motors

Cautions for Safety

Option

Model Code P.D6	Lead-Wire/Terminal Box Position Mark P.E54	Option P.E110
--------------------	--	------------------



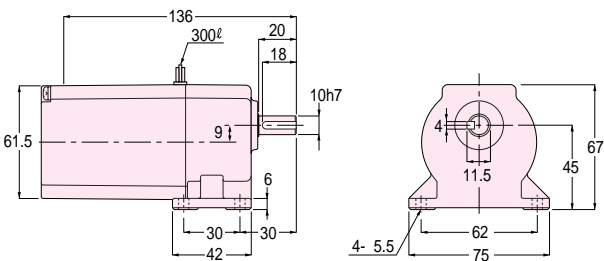
Foot Mount type



Flange Mount type

Foot Mount Type Gearmotor/Reversible gearmotor

Fig.D-17 LG -10_B^M-3 ~ 200-S06
LGR-10_B^M-3 ~ 200-S06

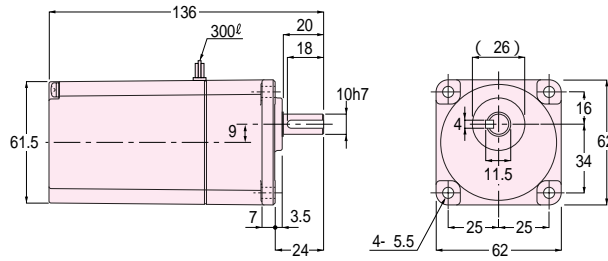


[Round Weight 1.5 kg]

CAD Data: LG-10M-S06
LGR-10M-S06

Flange Mount Type Gearmotor/Reversible gearmotor

Fig.D-18 FG -10_B^M-3 ~ 200-S06
FGR-10_B^M-3 ~ 200-S06

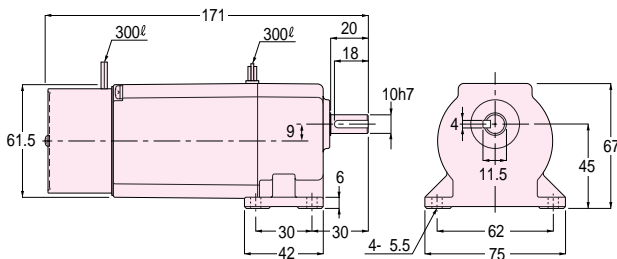


[Round Weight 1.5 kg]

CAD Data: FG-10M-S06
FGR-10M-S06

Foot Mount Type Gearmotor with Brake

Fig.D-19 LGN-10_B^M-3 ~ 200-S06

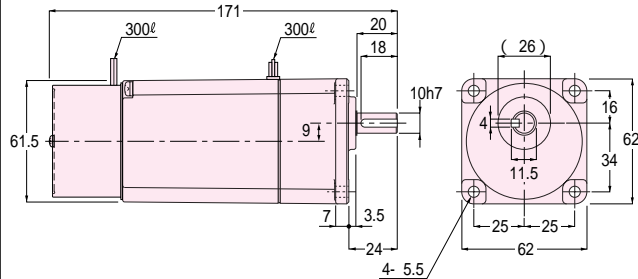


[Round Weight 1.5 kg]

CAD Data: LGN-10M-S06

Flange Mount Type Gearmotor with Brake

Fig.D-20 FGN-10_B^M-3 ~ 200-S06



[Round Weight 1.5 kg]

CAD Data: FGN-10M-S06

Note) Since the figure in the parenthesis is the one with black scale, add more than 0.5mm to that figure for the diameter of the connecting hole. In the CAD data, the file name is common to the both type, M(Metal type) and B(Bearing type).

Parallel Shaft Performance Table/ Dimension

- Gearmotor with Brake
- Water-resistant Gearmotor with Brake
- Speed Control Gearmotor
- Gearmotor with Clutch /Brake
- GT-Type Gearmotor with Brake

Right Angle Shaft Performance Table/ Dimension

- Gearmotor with Brake
- With Water-resistant Brake Motor
- Speed Control Gearmotor

Concentric Hollow Shaft Performance Table/ Dimension

- Gearmotor with Brake
- With Water-resistant Brake Motor
- Speed Control Gearmotor

Parallel Shaft GTR-L Series Performance Table/ Dimension

- Reversible Gearmotor with Brake
- Speed Control Gearmotor with Brake

Technical Information

- Standard Motors
- Cautions for Safety
- Option

GTR-L Series Gearmotor • Reversible gearmotor Gearmotor with Brake

G-Type [Parallel Shaft] 1-Phase 10W

Gearmotor/Gearmotor with Brake

Motor Specs.	Capacity	Motor Capacity Designation	Voltage (V)	Frequency (Hz)	Frame No.	Rated Current (A)	Rated Rotation Speed (rpm)	Capacitor (μF)	Insulation Classification	Protective system
Standard Voltage (Continuous Rated 4 Poles)	10W	S10	100/100	50/60	10	0.30/0.30	1300/1550	3.5	E	Totally Enclosed
Double Voltage (Continuous Rated 4 Poles)		S10W	200/200	50/60	10	0.17/0.17	1300/1600	1		

Reversible gearmotor

Motor Specs.	Capacity	Motor Capacity Designation	Voltage (V)	Frequency (Hz)	Frame No.	Rated Current (A)	Rated Rotation Speed (rpm)	Capacitor (μF)	Insulation Classification	Protective system
Standard Voltage 4 pole, 30min, rating	10W	S10	100/100	50/60	10	0.29/0.29	1300/1600	4.5	E	Totally Enclosed
Double Voltage 4 pole, 30min, rating		S10W	200/200	50/60	10	0.17/0.16	1300/1600	1.2		

Motor Capacity	Frame No.	Reduction Ratio	Output Shaft Rotation Speed (rpm)		Output Shaft Allowable Torque		Output Shaft Allowable O.H.L		Page, Diagram No. of the Outer Dimension Diagram, Round Weight			
			50Hz	60Hz	N•m	kgf•m	N	kgf	Gearmotor Reversible gearmotor		Gearmotor with Brake	
									LG•LGR	FG•LGR	LGN	FGN
1-phase 10W	10	1/ 3	500	600	0.10	0.01	59	6	P.D23 Fig.D-21 1.5kg	P.D23 Fig.D-22 1.5kg	P.D23 Fig.D-23 1.5kg	P.D23 Fig.D-24 1.5kg
		1/ 5	300	360	0.20	0.02	78	8				
		1/ 10	150	180	0.39	0.04	137	14				
		1/ 15	100	120	0.69	0.07	206	21				
		1/ 20	75	90	0.88	0.09	245	25				
		1/ 25	60	72	1.08	0.11	274	28				
		1/ 30	50	60	1.27	0.13	314	32				
		1/ 40	37.5	45	1.76	0.18	343	35				
		1/ 50	30	36	2.16	0.22	343	35				
		1/ 60	25	30	2.65	0.27	343	35				
		1/ 80	18.8	22.5	3.33	0.34	343	35				
		1/100	15	18	4.21	0.43	343	35				
1/120	12.5	15	5.00	0.51	343	35						
1/160	9.4	11.2	6.66	0.68	343	35						
1/200	7.5	9	7.84	0.8	343	35						

Note) The allowable O.H.L indicated are the values in the central position of the output shaft.
Be sure to read the cautions stated on Page D19.

Parallel Shaft Performance Table/ Dimension
Gearmotor with Brake
Water-resistant Gearmotor with Brake
Speed Control Gearmotor
Gearmotor with Clutch/Brake
GT-Type Gearmotor with Brake
Right Angle Shaft Performance Table/ Dimension
Gearmotor with Brake
With Water-resistant Brake Motor
Speed Control Gearmotor
Concentric Hollow Shaft Performance Table/ Dimension
Gearmotor with Brake
With Water-resistant Brake Motor
Speed Control Gearmotor
Parallel Shaft GTR-L Series Performance Table/ Dimension
Reversible Gearmotor with Brake
Speed Control Gearmotor with Brake
Technical Information
Standard Motors
Cautions for Safety
Option

Model Code P.D6	Lead-Wire/Terminal Box Position Mark P.E54	Option P.E110
--------------------	--	------------------



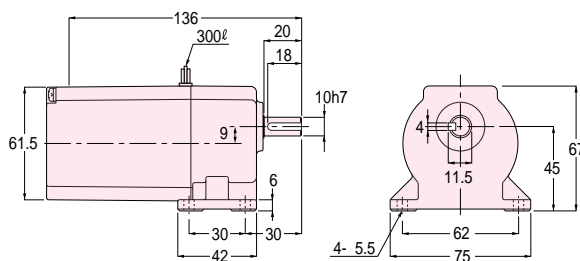
Foot Mount type



Flange Mount type

Foot Mount Type Gearmotor/Reversible gearmotor

Fig.D-21 LG -10_B^M-3 ~ 200-S10
 LG -10_B^M-3 ~ 200-S10W
 LGR-10_B^M-3 ~ 200-S10
 LGR-10_B^M-3 ~ 200-S10W

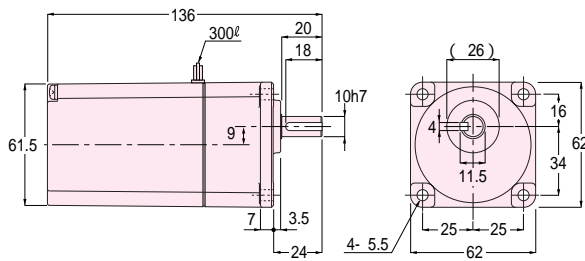


[Round Weight 1.5 kg]

CAD Data: LG-10M-S10
 LG-10M-S10W
 LGR-10M-S10
 LGR-10M-S10W

Flange Mount Type Gearmotor/Reversible gearmotor

Fig.D-22 FG -10_B^M-3 ~ 200-S10
 FG -10_B^M-3 ~ 200-S10W
 FGR-10_B^M-3 ~ 200-S10
 FGR-10_B^M-3 ~ 200-S10W

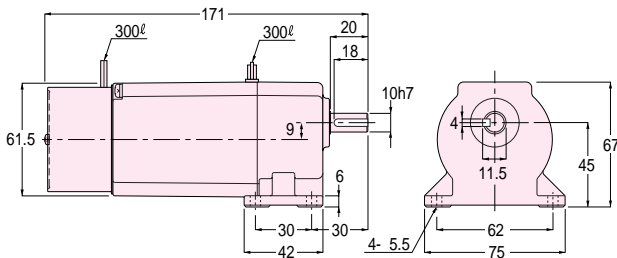


[Round Weight 1.5 kg]

CAD Data: FG-10M-S10
 FG-10M-S10W
 FGR-10M-S10
 FGR-10M-S10W

Foot Mount Type Gearmotor with Brake

Fig.D-23 LGN-10_B^M-3 ~ 200-S10
 LGN-10_B^M-3 ~ 200-S10W

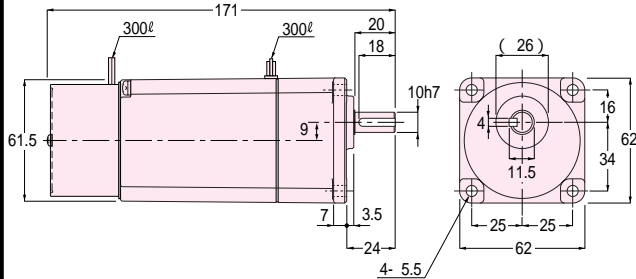


[Round Weight 1.5 kg]

CAD Data: LGN-10M-S10
 LGN-10M-S10W

Flange Mount Type Gearmotor with Brake

Fig.D-24 FGN-10_B^M-3 ~ 200-S10
 FGN-10_B^M-3 ~ 200-S10W



[Round Weight 1.5 kg]

CAD Data: FGN-10M-S10
 FGN-10M-S10W

Note) Since the figure in the parenthesis is the one with black scale, add more than 0.5mm to that figure for the diameter of the connecting hole.
 In the CAD data, the file name is common to the both type, M(Metal type) and B(Bearing type).

Parallel Shaft Performance Table/
Dimension

- Gearmotor with Brake
- Water-resistant Gearmotor with Brake
- Speed Control Gearmotor
- Gearmotor with Clutch /Brake
- GT-Type Gearmotor with Brake

Right Angle Shaft Performance Table/
Dimension

- Gearmotor with Brake
- With Water-resistant Brake Motor
- Speed Control Gearmotor

Concentric Hollow Shaft Performance Table/
Dimension

- Gearmotor with Brake
- With Water-resistant Brake Motor
- Speed Control Gearmotor

Parallel Shaft GTR-L Series Performance Table/
Dimension

- Reversible Gearmotor with Brake
- Speed Control Gearmotor with Brake

Technical Information

- Standard Motors
- Cautions for Safety
- Option

GTR-L Series

Gearmotor • Reversible gearmotor Gearmotor with Brake

G-Type [Parallel Shaft] 1-Phase 15W

Gearmotor/Gearmotor with Brake

Motor Specs.	Capacity	Motor Capacity Designation	Voltage (V)	Frequency (Hz)	Frame No.	Rated Current (A)	Rated Rotation Speed (rpm)	Capacitor (μF)	Insulation Classification	Protective system
Standard Voltage (Continuous Rated 4 Poles)	15W	S15	100/100	50/60	12	0.39/0.35	1350/1650	5	E	Totally Enclosed
Double Voltage (Continuous Rated 4 Poles)		S15W	200/200	50/60	12	0.21/0.19	1350/1650	1.2		

Reversible gearmotor

Motor Specs.	Capacity	Motor Capacity Designation	Voltage (V)	Frequency (Hz)	Frame No.	Rated Current (A)	Rated Rotation Speed (rpm)	Capacitor (μF)	Insulation Classification	Protective system
Standard Voltage 4 pole, 30min, rating	15W	S15	100/100	50/60	12	0.35/0.40	1400/1700	6	E	Totally Enclosed
Double Voltage 4 pole, 30min, rating		S15W	200/200	50/60	12	0.20/0.20	1400/1700	1.5		

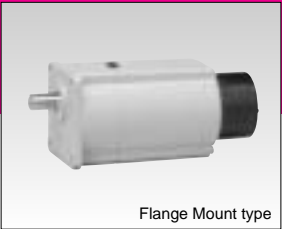
Motor Capacity	Frame No.	Reduction Ratio	Output Shaft Rotation Speed (rpm)		Output Shaft Allowable Torque		Output Shaft Allowable O.H.L		Page, Diagram No. of the Outer Dimension Diagram, Round Weight			
			50Hz	60Hz	N•m	kgf•m	N	kgf	Gearmotor Reversible gearmotor		Gearmotor with Brake	
									LG•LGR	FG•LGR	LGN	FGN
1-phase 15W	12	1/ 3	500	600	0.20	0.02	98	10	P.D25 Fig.D-25 2kg	P.D25 Fig.D-26 2kg	P.D25 Fig.D-27 2kg	P.D25 Fig.D-28 2kg
		1/ 5	300	360	0.29	0.03	196	20				
		1/ 10	150	180	0.69	0.07	294	30				
		1/ 15	100	120	0.98	0.10	343	35				
		1/ 20	75	90	1.27	0.13	392	40				
		1/ 25	60	72	1.67	0.17	441	45				
		1/ 30	50	60	1.96	0.20	490	50				
		1/ 40	37.5	45	2.65	0.27	490	50				
		1/ 50	30	36	3.33	0.34	490	50				
		1/ 60	25	30	3.92	0.40	490	50				
		1/ 80	18.8	22.5	5.00	0.51	490	50				
		1/100	15	18	6.27	0.64	490	50				
		1/120	12.5	15	7.45	0.76	490	50				
		1/160	9.4	11.2	9.80	1.0	490	50				
		1/200	7.5	9	12.7	1.3	490	50				
		1/240	6.3	7.5	14.7	1.5	490	50				
* 1/300	5	6	14.7	1.5	490	50						
* 1/360	4.2	5	14.7	1.5	490	50						

Note) The allowable O.H.L indicated are the values in the central position of the output shaft.
 The models marked with * are low torque type. Be sure to refer to the allowable torque rating in the performance table.
 Be sure to read the cautions stated on Page D9.

Model Code P.D6	Lead-Wire/Terminal Box Position Mark P.E54	Option P.E110
--------------------	--	------------------



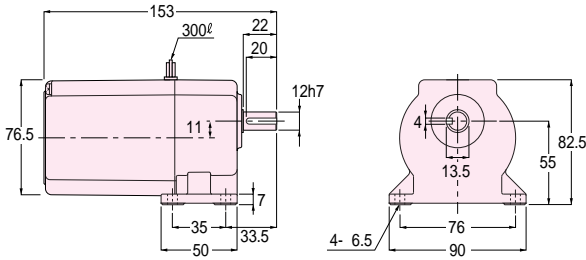
Foot Mount type



Flange Mount type

Foot Mount Type Gearmotor/Reversible gearmotor

Fig.D-25 LG -12_B^M-3 ~ 360-S15
 LG -12_B^M-3 ~ 360-S15W
 LGR-12_B^M-3 ~ 360-S15
 LGR-12_B^M-3 ~ 360-S15W

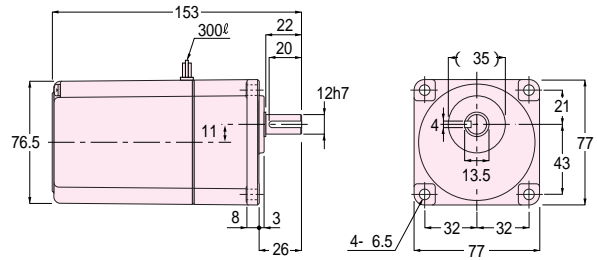


CAD Data: LG-12M-S15
 LG-12M-S15W
 LGR-12M-S15
 LGR-12M-S15W

[Round Weight 2 kg]

Flange Mount Type Gearmotor/Reversible gearmotor

Fig.D-26 FG -12_B^M-3 ~ 360-S15
 FG -12_B^M-3 ~ 360-S15W
 FGR-12_B^M-3 ~ 360-S15
 FGR-12_B^M-3 ~ 360-S15W

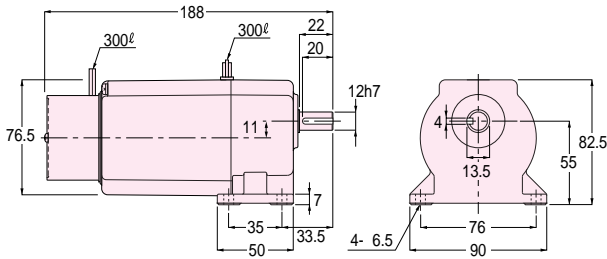


CAD Data: FG-12M-S15
 FG-12M-S15W
 FGR-12M-S15
 FGR-12M-S15W

[Round Weight 2 kg]

Foot Mount Type Gearmotor with Brake

Fig.D-27 LGN-12_B^M-3 ~ 360-S15
 LGN-12_B^M-3 ~ 360-S15W

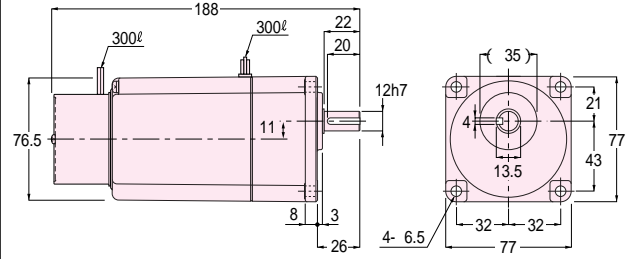


CAD Data: LGN-12M-S15
 LGN-12M-S15W

[Round Weight 2 kg]

Flange Mount Type Gearmotor with Brake

Fig.D-28 FGN-12_B^M-3 ~ 360-S15
 FGN-12_B^M-3 ~ 360-S15W



CAD Data: FGN-12M-S15
 FGN-12M-S15W

[Round Weight 2 kg]

Note) Since the figure in the parenthesis is the one with black scale, add more than 0.5mm to that figure for the diameter of the connecting hole.
 In the CAD data, the file name is common to the both type, M(Metal type) and B(Bearing type).

Parallel Shaft Performance Table/
Dimension

- Gearmotor with Brake
- Water-resistant Gearmotor with Brake
- Speed Control Gearmotor
- Gearmotor with Clutch /Brake
- GT-Type Gearmotor with Brake

Right Angle Shaft Performance Table/
Dimension

- Gearmotor with Brake
- With Water-resistant Brake Motor
- Speed Control Gearmotor

Concentric Hollow Shaft Performance Table/
Dimension

- Gearmotor with Brake
- With Water-resistant Brake Motor
- Speed Control Gearmotor

Parallel Shaft GTR-L Series Performance Table/
Dimension

- Reversible Gearmotor with Brake
- Speed Control Gearmotor with Brake

Technical Information

- Standard Motors
- Cautions for Safety
- Option

GTR-L Series Gearmotor • Reversible gearmotor Gearmotor with Brake

G-Type [Parallel Shaft] 1-Phase 25W

Gearmotor/Gearmotor with Brake

Motor Specs.	Capacity	Motor Capacity Designation	Voltage (V)	Frequency (Hz)	Frame No.	Rated Current (A)	Rated Rotation Speed (rpm)	Capacitor (μF)	Insulation Classification	Protective system
Standard Voltage (Continuous Rated 4 Poles)	25W	S25	100/100	50/60	12	0.48/0.48	1350/1600	7	E	Totally Enclosed
					15	0.44/0.45	1350/1650	7		
Double Voltage (Continuous Rated 4 Poles)		S25W	200/200	50/60	12	0.26/0.25	1350/1600	1.7		
					15	0.23/0.24	1350/1650	1.7		

Reversible gearmotor

Motor Specs.	Capacity	Motor Capacity Designation	Voltage (V)	Frequency (Hz)	Frame No.	Rated Current (A)	Rated Rotation Speed (rpm)	Capacitor (μF)	Insulation Classification	Protective system
Standard Voltage 4 pole, 30min, rating	25W	S25	100/100	50/60	12	0.55/0.65	1400/1650	10	E	Totally Enclosed
					15	0.50/0.65	1400/1650	10		
Double Voltage 4 pole, 30min, rating		S25W	200/200	50/60	12	0.26/0.33	1400/1650	2.5		
					15	0.26/0.35	1400/1650	2.5		

Motor Capacity	Frame No.	Reduction Ratio	Output Shaft Rotation Speed (rpm)		Output Shaft Allowable Torque		Output Shaft Allowable O.H.L		Page, Diagram No. of the Outer Dimension Diagram, Round Weight			
			50Hz	60Hz	N•m	kgf•m	N	kgf	Gearmotor Reversible gearmotor		Gearmotor with Brake	
									LG•LGR	FG•LGR	LGN	FGN
1-phase 25W	12	1/ 3	500	600	0.29	0.03	98	10	P.D27 Fig.D-29 2kg	P.D27 Fig.D-31 2kg	P.D28 Fig.D-33 2.5kg	P.D28 Fig.D-35 2.5kg
		1/ 5	300	360	0.59	0.06	196	20				
		1/ 10	150	180	1.08	0.11	294	30				
		1/ 15	100	120	1.67	0.17	343	35				
		1/ 20	75	90	2.25	0.23	392	40				
		1/ 25	60	72	2.74	0.28	441	45				
		1/ 30	50	60	3.33	0.34	490	50				
		1/ 40	37.5	45	4.41	0.45	490	50				
		1/ 50	30	36	5.49	0.56	490	50				
		1/ 60	25	30	6.66	0.68	490	50				
		1/ 80	18.8	22.5	8.43	0.86	490	50				
		1/100	15	18	10.8	1.1	490	50				
	1/120	12.5	15	12.7	1.3	490	50					
	15	1/160	9.4	11.2	16.7	1.7	686	70	P.D27 Fig.D-30 2.5kg	P.D27 Fig.D-32 2.5kg	P.D28 Fig.D-34 3kg	P.D28 Fig.D-36 3kg
		1/200	7.5	9	20.6	2.1	686	70				
		1/240	6.3	7.5	25.5	2.6	686	70				
		* 1/300	5	6	26.5	2.7	686	70				
		* 1/360	4.2	5	26.5	2.7	686	70				

Note) The allowable O.H.L indicated are the values in the central position of the output shaft.
The models marked with * are low torque type. Be sure to refer to the allowable torque rating in the performance table.
Be sure to read the cautions stated on Page D9.

Model Code P.D6	Lead-Wire/Terminal Box Position Mark P.E54	Option P.E110
--------------------	--	------------------

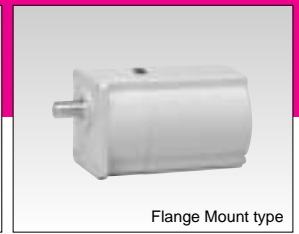
Gearmotor · Reversible gearmotor

G-Type (Parallel Shaft) 1-Phase 25W

Foot Mount Type Gearmotor/Reversible gearmotor

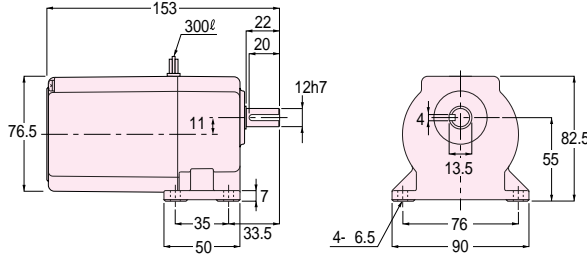


Foot Mount type



Flange Mount type

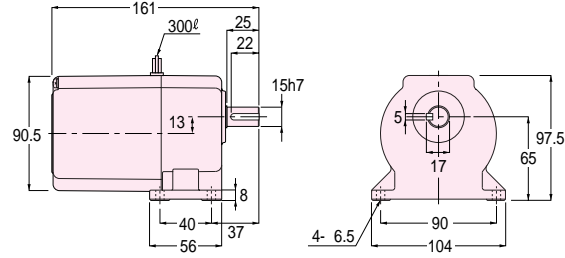
Fig.D-29 LG -12_B^M-3 ~ 120-S25
LG -12_B^M-3 ~ 120-S25W
LGR-12_B^M-3 ~ 120-S25
LGR-12_B^M-3 ~ 120-S25W



CAD Data:
LG-12M-S25
LG-12M-S25W
LGR-12M-S25
LGR-12M-S25W

[Round Weight 2 kg]

Fig.D-30 LG -15_B^M-160 ~ 360-S25
LG -15_B^M-160 ~ 360-S25W
LGR-15_B^M-160 ~ 360-S25
LGR-15_B^M-160 ~ 360-S25W

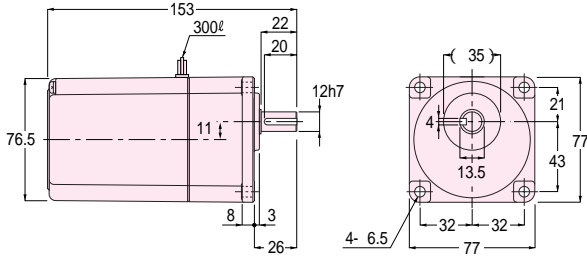


CAD Data:
LG-15M-S25
LG-15M-S25W
LGR-15M-S25
LGR-15M-S25W

[Round Weight 2.5 kg]

Flange Mount Type Gearmotor/Reversible gearmotor

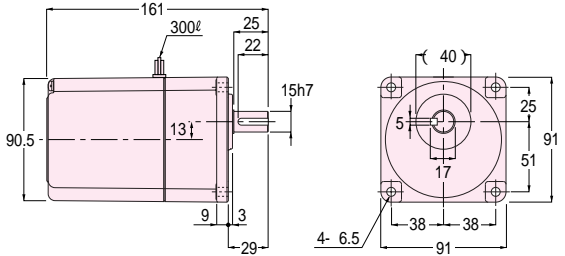
Fig.D-31 FG -12_B^M-3 ~ 120-S25
FG -12_B^M-3 ~ 120-S25W
FGR-12_B^M-3 ~ 120-S25
FGR-12_B^M-3 ~ 120-S25W



CAD Data:
FG-12M-S25
FG-12M-S25W
FGR-12M-S25
FGR-12M-S25W

[Round Weight 2 kg]

Fig.D-32 FG -15_B^M-160 ~ 360-S25
FG -15_B^M-160 ~ 360-S25W
FGR-15_B^M-160 ~ 360-S25
FGR-15_B^M-160 ~ 360-S25W



CAD Data:
FG-15M-S25
FG-15M-S25W
FGR-15M-S25
FGR-15M-S25W

[Round Weight 2.5 kg]

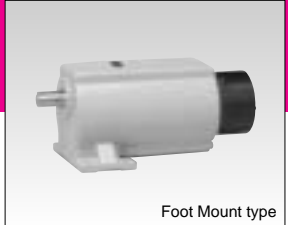
Note Since the figure in the parenthesis is the one with black scale, add more than 0.5mm to that figure for the diameter of the connecting hole. In the CAD data, the file name is common to the both type, M(Metal type) and B(Bearing type).

GTR-L Series

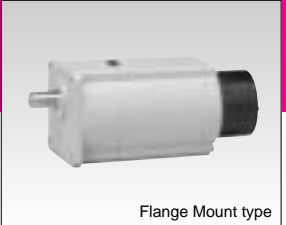
Gearmotor with Brake

G-Type(Parallel Shaft) 1-Phase 25W

Foot Mount Type Gearmotor

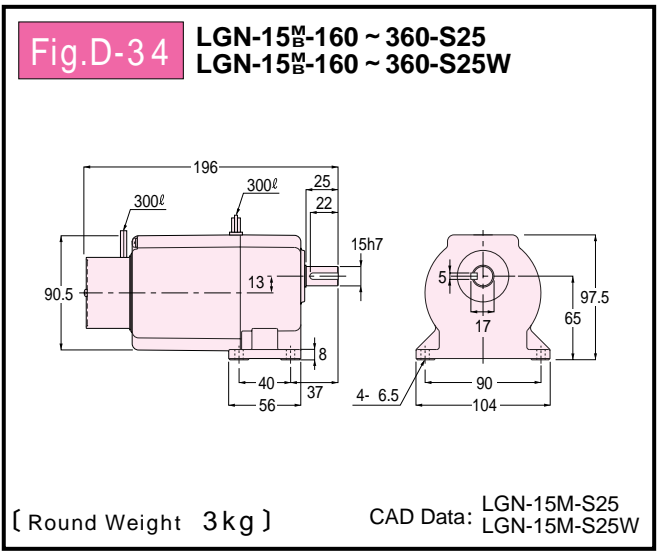
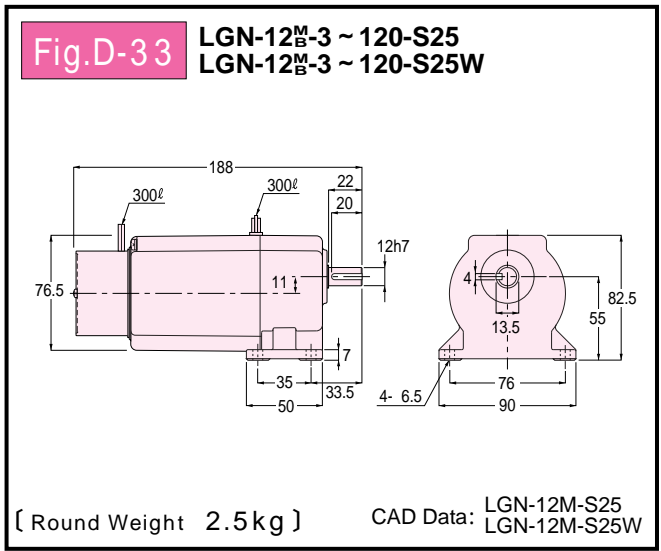


Foot Mount type

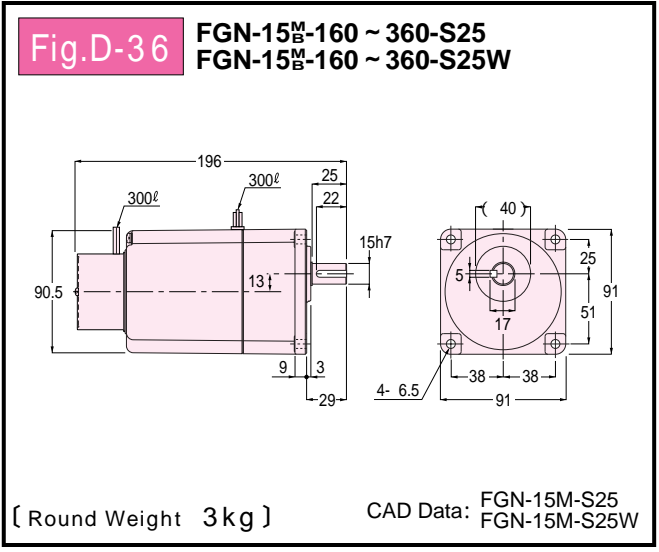
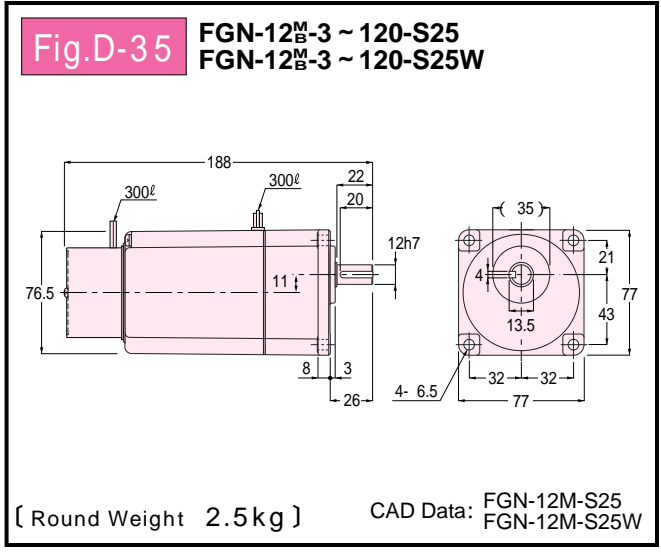


Flange Mount type

- Parallel Shaft Performance Table/
Dimension
- Gearmotor with Brake
- Water-resistant Gearmotor with Brake
- Speed Control Gearmotor
- Gearmotor with Clutch/Brake
- GT-Type Gearmotor with Brake
- Right Angle Shaft Performance Table/
Dimension
- Gearmotor with Brake
- With Water-resistant Brake Motor
- Speed Control Gearmotor
- Concentric Hollow Shaft Performance Table/
Dimension
- Gearmotor with Brake
- With Water-resistant Brake Motor
- Speed Control Gearmotor
- Parallel Shaft GTR-L Series Performance Table/
Dimension
- Reversible Gearmotor with Brake
- Speed Control Gearmotor with Brake
- Technical Information
- Standard Motors
- Cautions for Safety
- Option



Flange Mount Type Gearmotor



Note) Since the figure in the parenthesis is the one with black scale, add more than 0.5mm to that figure for the diameter of the connecting hole. In the CAD data, the file name is common to the both type, M(Metal type) and B(Bearing type).

Model Code P.D6	Lead-Wire/Terminal Box Position Mark P.E54	Option P.E110
---------------------------	--	-------------------------

Parallel Shaft
Performance
Table/
Dimension

Gearmotor
with Brake

Water-
resistant
Gearmotor
with Brake

Speed
Control
Gearmotor

Gearmotor
with Clutch
/Brake

GT-Type
Gearmotor
with Brake

Right Angle Shaft
Performance
Table/
Dimension

Gearmotor
with Brake

With Water-
resistant
Brake Motor

Speed
Control
Gearmotor

Concentric Hollow Shaft
Concentric Solid Shaft
Performance Table/
Dimension

Gearmotor
with Brake

With Water-
resistant
Brake Motor

Speed
Control
Gearmotor

Parallel Shaft
GTR-L Series
Performance
Table/
Dimension

Reversible
Gearmotor
with Brake

Speed
Control
Gearmotor
with Brake

Technical
Information

Standard
Motors

Cautions
for Safety

Option

GTR-L Series Gearmotor • Reversible gearmotor Gearmotor with Brake

G-Type [Parallel Shaft] 1-Phase 40W

Gearmotor/Gearmotor with Brake

Motor Specs.	Capacity	Motor Capacity Designation	Voltage (V)	Frequency (Hz)	Frame No.	Rated Current (A)	Rated Rotation Speed (rpm)	Capacitor (μF)	Insulation Classification	Protective system
Standard Voltage (Continuous Rated 4 Poles)	40W	S40	100/100	50/60	15	0.61/0.66	1350/1650	10	E	Totally Enclosed
Double Voltage (Continuous Rated 4 Poles)		S40W	200/200	50/60	15	0.29/0.34	1350/1600	2.5		

Reversible gearmotor

Motor Specs.	Capacity	Motor Capacity Designation	Voltage (V)	Frequency (Hz)	Frame No.	Rated Current (A)	Rated Rotation Speed (rpm)	Capacitor (μF)	Insulation Classification	Protective system
Standard Voltage 4 pole, 30min, rating	40W	S40	100/100	50/60	15	0.75/0.88	1400/1650	14	E	Totally Enclosed
Double Voltage 4 pole, 30min, rating		S40W	200/200	50/60	15	0.37/0.41	1400/1650	3.5		

Motor Capacity	Frame No.	Reduction Ratio	Output Shaft Rotation Speed (rpm)		Output Shaft Allowable Torque		Output Shaft Allowable O.H.L		Page, Diagram No. of the Outer Dimension Diagram, Round Weight			
			50Hz	60Hz	N•m	kgf•m	N	kgf	Gearmotor Reversible gearmotor		Gearmotor with Brake	
									LG•LGR	FG•LGR	LGN	FGN
1-phase 40W	15	1/ 3	500	600	0.49	0.05	147	15	P.D31 Fig.D-37 2.5kg	P.D31 Fig.D-38 2.5kg	P.D31 Fig.D-39 3kg	P.D31 Fig.D-40 3kg
		1/ 5	300	360	0.88	0.09	294	30				
		1/ 10	150	180	1.76	0.18	343	35				
		1/ 15	100	120	2.65	0.27	441	45				
		1/ 20	75	90	3.53	0.36	490	50				
		1/ 25	60	72	4.41	0.45	539	55				
		1/ 30	50	60	5.29	0.54	637	65				
		1/ 40	37.5	45	7.06	0.72	686	70				
		1/ 50	30	36	8.82	0.90	686	70				
		1/ 60	25	30	10.8	1.1	686	70				
		1/ 80	18.8	22.5	13.7	1.4	686	70				
		1/100	15	18	16.7	1.7	686	70				
		1/120	12.5	15	20.6	2.1	686	70				
		1/160	9.4	11.2	26.5	2.7	686	70				
		* 1/200	7.5	9	26.5	2.7	686	70				
* 1/240	6.3	7.5	26.5	2.7	686	70						
* 1/300	5	6	26.5	2.7	686	70						
* 1/360	4.2	5	26.5	2.7	686	70						

Note) The allowable O.H.L indicated are the values in the central position of the output shaft.
The models marked with * are low torque type. Be sure to refer to the allowable torque rating in the performance table.
Be sure to read the cautions stated on Page D9.

Model Code P.D6	Lead-Wire/Terminal Box Position Mark P.E54	Option P.E110
--------------------	--	------------------



Foot Mount type

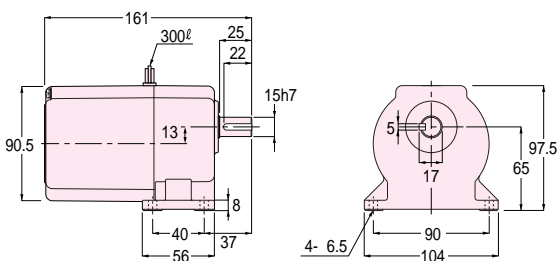


Flange Mount type

Foot Mount Type Gearmotor/Reversible gearmotor

Fig.D-37

LG -15_B^M-3 ~ 360-S40
 LG -15_B^M-3 ~ 360-S40W
 LGR-15_B^M-3 ~ 360-S40
 LGR-15_B^M-3 ~ 360-S40W



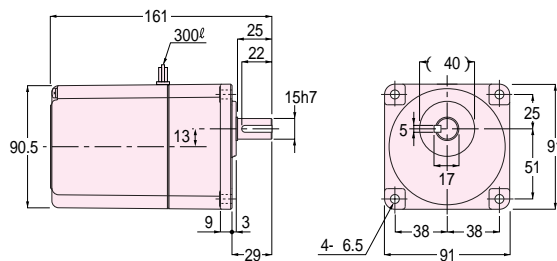
CAD Data: LG-15M-S40
 LG-15M-S40W
 LGR-15M-S40
 LGR-15M-S40W

[Round Weight 2.5 kg]

Flange Mount Type Gearmotor/Reversible gearmotor

Fig.D-38

FG -15_B^M-3 ~ 360-S40
 FG -15_B^M-3 ~ 360-S40W
 FGR-15_B^M-3 ~ 360-S40
 FGR-15_B^M-3 ~ 360-S40W



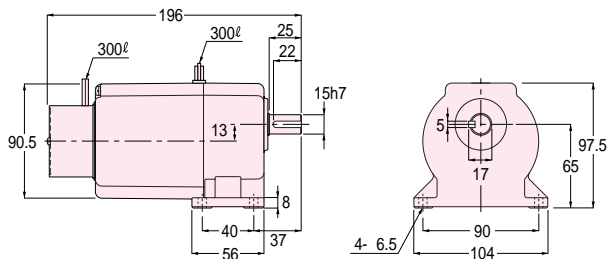
CAD Data: FG-15M-S40
 FG-15M-S40W
 FGR-15M-S40
 FGR-15M-S40W

[Round Weight 2.5 kg]

Foot Mount Type Gearmotor with Brake

Fig.D-39

LGN-15_B^M-3 ~ 360-S40
 LGN-15_B^M-3 ~ 360-S40W



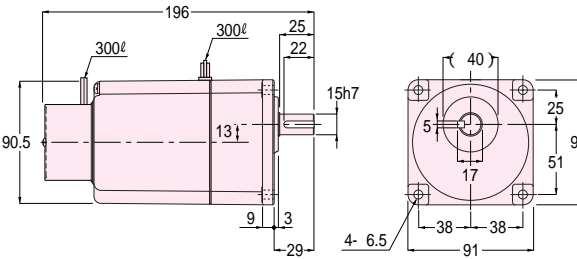
CAD Data: LGN-15M-S40
 LGN-15M-S40W

[Round Weight 3 kg]

Flange Mount Type Gearmotor with Brake

Fig.D-40

FGN-15_B^M-3 ~ 360-S40
 FGN-15_B^M-3 ~ 360-S40W



CAD Data: FGN-15M-S40
 FGN-15M-S40W

[Round Weight 3 kg]

Note) Since the figure in the parenthesis is the one with black scale, add more than 0.5mm to that figure for the diameter of the connecting hole. In the CAD data, the file name is common to the both type, M(Metal type) and B(Bearing type).

Parallel Shaft Performance Table/ Dimension

- Gearmotor with Brake
- Water-resistant Gearmotor with Brake
- Speed Control Gearmotor
- Gearmotor with Clutch /Brake
- GT-Type Gearmotor with Brake

Right Angle Shaft Performance Table/ Dimension

- Gearmotor with Brake
- With Water-resistant Brake Motor
- Speed Control Gearmotor

Concentric Hollow Shaft Performance Table/ Dimension

- Gearmotor with Brake
- With Water-resistant Brake Motor
- Speed Control Gearmotor

Parallel Shaft GTR-L Series Performance Table/ Dimension

- Reversible Gearmotor with Brake
- Speed Control Gearmotor with Brake

Technical Information

- Standard Motors
- Cautions for Safety
- Option



Parallel Shaft

Speed control Gearmotor Speed control Gearmotor with Brake

GTR-L
Series

Model and Type Designation Standard Model Lineup

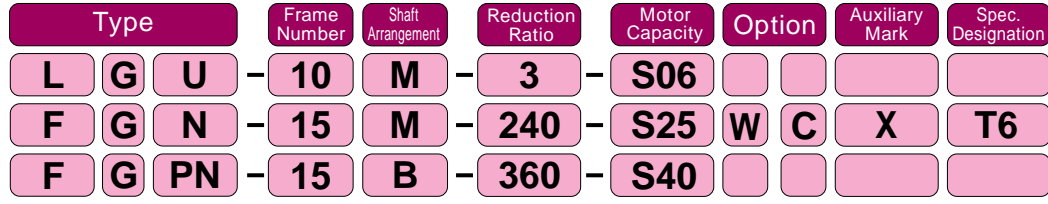
G
Type

Parallel Shaft

Motor Part	Number of phase	1-Phase
	Capacity	6W ~ 40W
	Power Source	100V 50/60Hz
	Insulation Classification	Class E
	Starting Method	Capacitor Start
	Protective cooling Method	Totally Enclosed
	Number of Pole	4
	Rating	Continuous Rating
Speed Reduction Part	Reduction Method	Spur gear and Helical gear
	Lubrication	Grease Lubrication
	Output Shaft	New JIS Key(JIS 1301-1976 class)
	Output Shaft Material	S43C
	Case Material	Aluminium die-cast
Ambient Conditions	Ambient Temperature	- 10 ~ 40
	Ambient Humidity	85%max.(without any dew condensation)
	Altitude	1,000m max.
	Environment	Well ventilated place free from corrosive gas, explosive gas vapor and/or dust.
	Installation Location	Indoors
Painting	Painting Method	Anion painting, Acrylic paint
	Painting Color	Grey(Mansel code: 9B6/0.5)
Mounting Direction		No restriction in the mounting angle.(horizontally, vertically or heeling angle)

Model and Type Designation L Series(Parallel Shaft)

GTR-L Series Speed control Gearmotor/Speed control Gearmotor with Brake are classified by codes as shown below. Specify these codes in your inquiry and order.

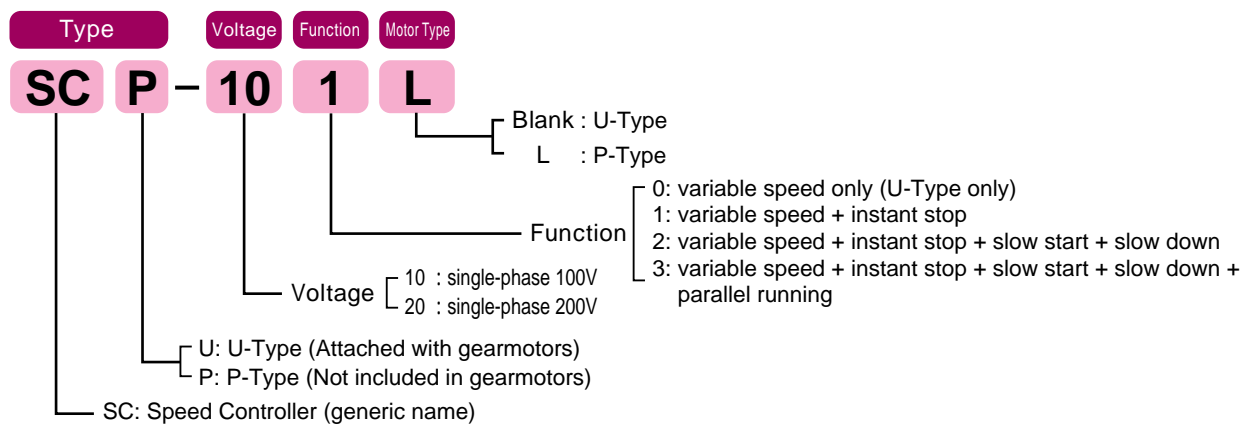


Classification by Mount Form	L	: Foot Mount
	F	: Flange Mount
Series Name	G	: Parallel Shaft
Classification by Motor Type	Blank	: With Motor
	U	: With Speed control Gearmotor U-Type(With Controller)
	P	: With Speed control Gearmotor P-Type(Controller Sells Separately)
	PN	: With Speed control Gearmotor with Brake P-Type(Controller Sells Separately)
Frame No. and Diameter of Output shaft	Output Shaft Diameter	
Bearing type	M	: Metal type
	B	: Bearing type
Reduction Ratio	3 : 1 / 3 ~ 360 : 1 / 360	
Motor Designation and Capacity	S06	: 1-phase 6W
	S10	: 1-phase 10W
	S15	: 1-phase 15W
	S25	: 1-phase 25W
	S40	: 1-phase 40W
Option	Blank	: Standard Specifications 1-phase: 100V / 50Hz, 100V / 60Hz
	W	: High Voltage 1-phase: 200V / 50Hz, 200V / 60Hz(except for 6W)
	C	: P-Type Terminal Box
Auxiliary Mark	Blank	: Standard Specs.
	X	: Mark for Additional Specs.
Spec. Designation	Position indicator for lead-wire, terminal box Refer to the indication mark list in P. E54 for details.	
<small>Note: Spec. Designation does not appear on the product type designation in the nameplate. It is specified on the additional numbers in the nameplate.</small>		

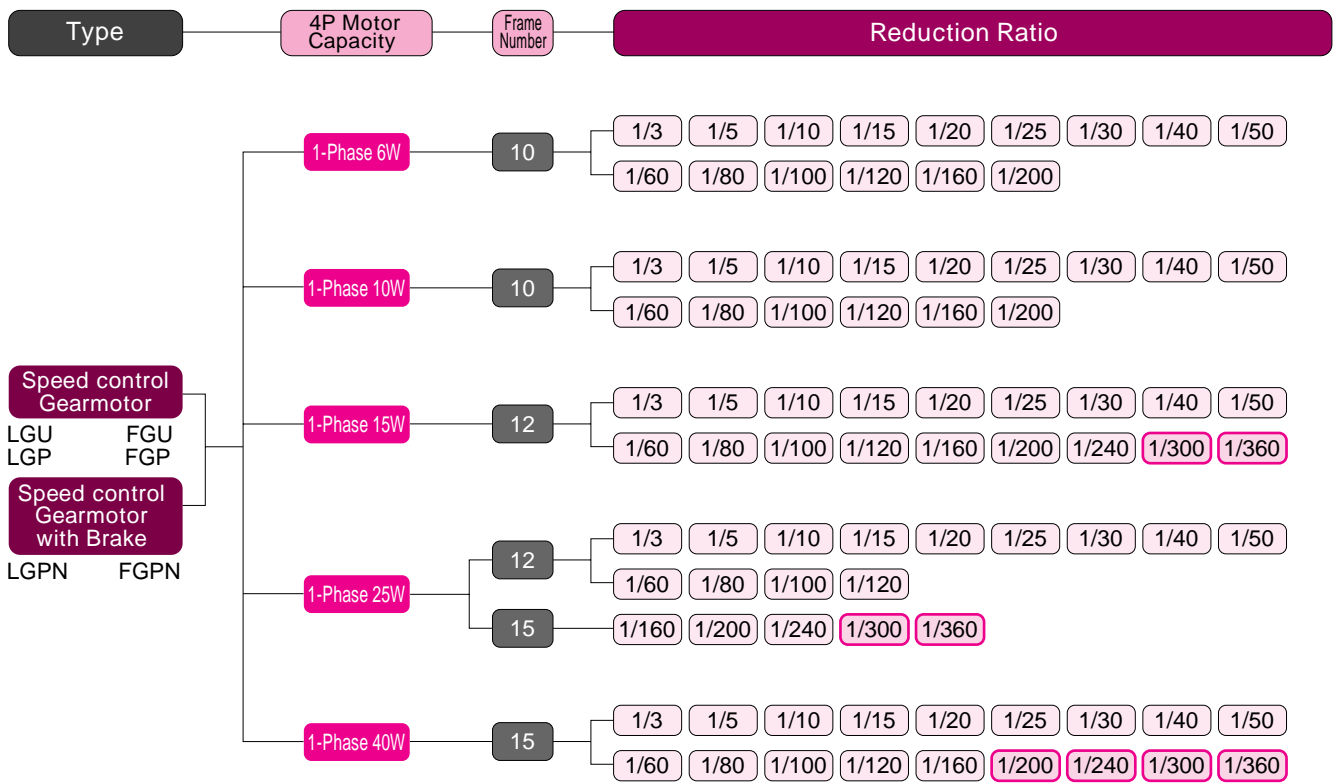
Controller

Type Designation

GTR-L Series controllers are classified by codes as shown below. These codes are required for your inquiry and/or order.



Standard Model Lineup



- Parallel Shaft Performance Table/ Dimension
- Gearmotor with Brake
- Water-resistant Gearmotor with Brake
- Speed Control Gearmotor
- Gearmotor with Clutch /Brake
- GT-Type Gearmotor with Brake
- Right Angle Shaft Performance Table/ Dimension
- Gearmotor with Brake
- With Water-resistant Brake Motor
- Speed Control Gearmotor
- Concentric Hollow Shaft Performance Table/ Dimension
- Gearmotor with Brake
- With Water-resistant Brake Motor
- Speed Control Gearmotor
- Parallel Shaft GTR-L Series Performance Table/ Dimension
- Reversible Gearmotor with Brake
- Speed Control Gearmotor with Brake
- Technical Information
- Standard Motors
- Cautions for Safety
- Option



Note 1) The models enclosed with orange color bold line are low torque type. Special care should be given to the allowable torque in the performance table.



Parallel Shaft

Speed control Gearmotor Speed control Gearmotor with Brake

GTR-L
Series

Performance Table Dimension diagram

G
Type

Parallel Shaft


1-Phase

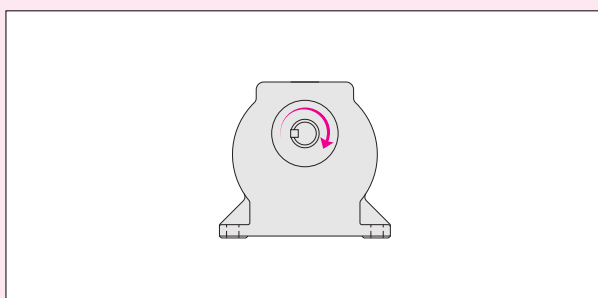
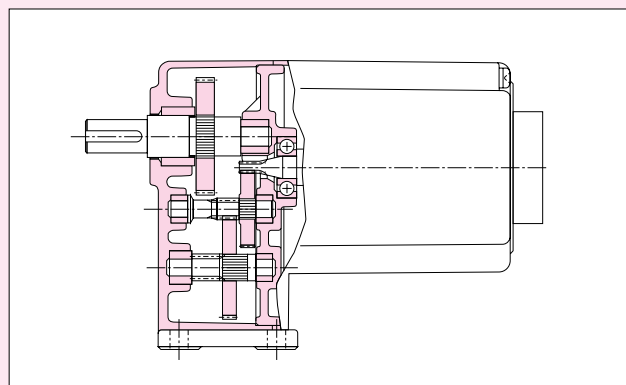
【Remarks】

The output rotation speed is the value corresponds to the motor synchronous speed and the nominal reduction ratio.

Allowable torques at high speed ($N \cdot m$ { $kgf \cdot m$ }) indicate the value in the range of high rotating speed(rpm).

The percentage(%) at the allowable torque of 50% indicate the percentage against the allowable torque at high speed.

The Shaded areas  in the performance table shows that in case gearmotors are wired (forward rotation) according to the diagram shown on [page E30](#), the shaft rotates clock wise when viewing from output side. (Refer to the diagram shown below.)



GTR-L Series Speed control gearmotors Speed control brake motors

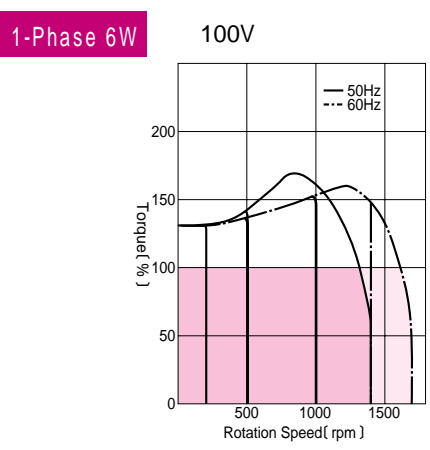
G-Type[Parallel Shaft] 1-Phase 6W

Motor Specs.	Capacity	Motor Capacity Designation	Voltage (V)	Frequency (Hz)	Frame No.	MAX Current (A)	High speed rotation range (rpm)	Capacitor (μF)	Insulation Classification	Protective system
Standard Voltage (Continuous Rated 4 Poles)	6W	S06	100/100	50/60	10	0.25/0.25	500 ~ 1300/50 ~ 1600	2.5	E	Totally Enclosed

Motor Capacity	Frame No.	Reduction Ratio	Output Shaft Rotation Speed (rpm)		Output Shaft Allowable O.H.L		Output Shaft Allowable Torque			Page, Diagram No. of the Outer Dimension Diagram, Round Weight			
			50Hz	60Hz	N	kgf	high speed		Gearmotor		Gearmotor with Brake		
							N·m	kgf·m	50rpm (%)	LGU·LGP	FGU·FGP	LGPN	FGPN
1-phase 6W	10	1/ 3	500	600	59	6	0.078	0.008	100	P.D39 Fig.D-41 1.5kg	P.D39 Fig.D-42 1.5kg	P.D39 Fig.D-43 1.5kg	P.D39 Fig.D-44 1.5kg
		1/ 5	300	360	78	8	0.098	0.01					
		1/ 10	150	180	137	14	0.294	0.03					
		1/ 15	100	120	206	21	0.392	0.04					
		1/ 20	75	90	245	25	0.490	0.05					
		1/ 25	60	72	274	28	0.686	0.07					
		1/ 30	50	60	314	32	0.784	0.08					
		1/ 40	37.5	45	343	35	1.08	0.11					
		1/ 50	30	36	343	35	1.27	0.13					
		1/ 60	25	30	343	35	1.57	0.16					
		1/ 80	18.8	22.5	343	35	1.96	0.20					
		1/100	15	18	343	35	2.55	0.26					
		1/120	12.5	15	343	35	3.04	0.31					
1/160	9.4	11.2	343	35	4.02	0.41							
1/200	7.5	9	343	35	5.0	0.51							

Note) The allowable O.H.L indicated are the values in the central position of the output shaft.
Be sure to read the cautions stated on Page D19.

Torque-Rotation Speed Characteristic Graph Note) 100% torque shows the allowable torque at high speed.



Model Code P.D34	Lead-Wire/Terminal Box Position Mark P.E54	Option P.E110 ~ E112
----------------------------	--	--------------------------------



Foot Mount type

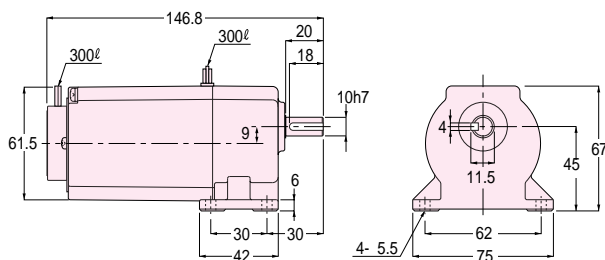


Flange Mount type

Foot Mount Type Speed control gearmotor

Flange Mount Type Speed control gearmotor

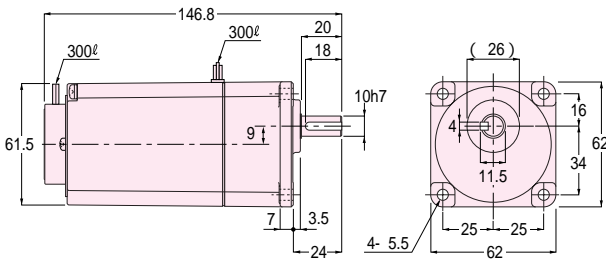
Fig.D-41 LGU-10^M_B-3 ~ 200-S06
LGP-10^M_B-3 ~ 200-S06



[Round Weight 1.5 kg]

CAD Data: LGU-10M-S06
LGP-10M-S06

Fig.D-42 FGU-10^M_B-3 ~ 200-S06
FGP-10^M_B-3 ~ 200-S06



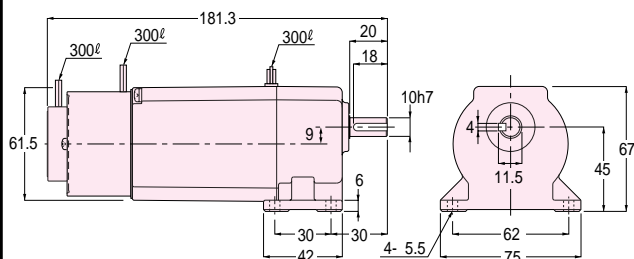
[Round Weight 1.5 kg]

CAD Data: FGU-10M-S06
FGP-10M-S06

Foot Mount Type Speed control gearmotor with Brake

Flange Mount Type Speed control gearmotor with Brake

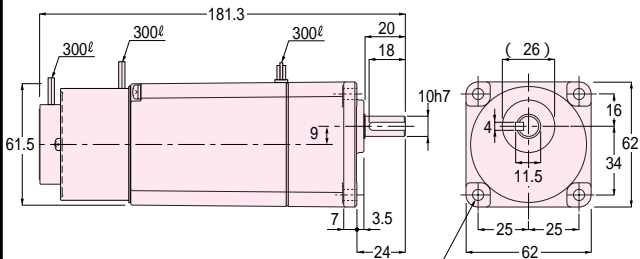
Fig.D-43 LGPN-10^M_B-3 ~ 200-S06



[Round Weight 1.5 kg]

CAD Data: LGPN-10M-S06

Fig.D-44 FGPN-10^M_B-3 ~ 200-S06



[Round Weight 1.5 kg]

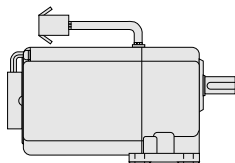
CAD Data: FGPN-10M-S06

Note) Since the figure in the parenthesis is the one with black scale, add more than 0.5mm to that figure for the diameter of the connecting hole. In the CAD data, the file name is common to the both type, M(Metal type) and B(Bearing type).

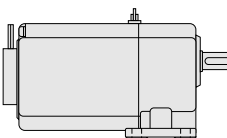
As for motor-type:

"U-Type" and "P-Type" are available in the Speed Control Gearmotor. Dimensions shown in the dimension diagram are all that for the "P-Type". In case of "U-Type", the only difference is the part of lead wire which has a connector as shown in the right.

U-Type Lead wire with connector 150mm



P-Type Motor lead wire 300mm
Lead wire for generator 300mm (white·white)



Parallel Shaft Performance Table/ Dimension
Gearmotor with Brake
Water-resistant Gearmotor with Brake
Speed Control Gearmotor
Gearmotor with Clutch / Brake
GT-Type Gearmotor with Brake
Right Angle Shaft Performance Table/ Dimension
Gearmotor with Brake
With Water-resistant Brake Motor
Speed Control Gearmotor
Concentric Hollow Shaft Performance Table/ Dimension
Gearmotor with Brake
With Water-resistant Brake Motor
Speed Control Gearmotor
Parallel Shaft GTR-L Series Performance Table/ Dimension
Reversible Gearmotor with Brake
Speed Control Gearmotor with Brake
Technical Information
Standard Motors
Cautions for Safety
Option

GTR-L Series Speed control gearmotors Speed control brake motors

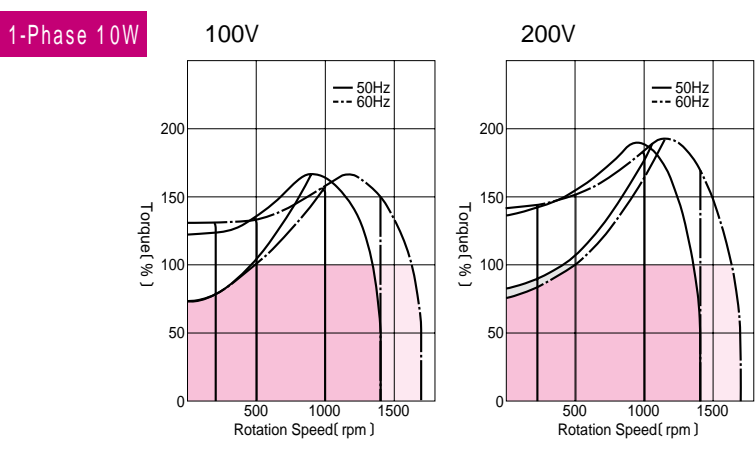
G-Type[Parallel Shaft] 1-Phase 10W

Motor Specs.	Capacity	Motor Capacity Designation	Voltage (V)	Frequency (Hz)	Frame No.	MAX Current (A)	High speed rotation range (rpm)	Capacitor (μF)	Insulation Classification	Protective system
Standard Voltage (Continuous Rated 4 Poles)	10W	S10	100/100	50/60	10	0.35/0.35	500 ~ 1300/500 ~ 1600	3.5	E	Totally Enclosed
Double Voltage (Continuous Rated 4 Poles)		S10W	200/200	50/60	10	0.2/0.2	450 ~ 1300/500 ~ 1600	1		

Motor Capacity	Frame No.	Reduction Ratio	Output Shaft Rotation Speed (rpm)		Output Shaft Allowable O.H.L		Output Shaft Allowable Torque			Page, Diagram No. of the Outer Dimension Diagram, Round Weight			
			50Hz	60Hz	N	kgf	high speed		Gearmotor		Gearmotor with Brake		
							N·m	kgf·m	50rpm (%)	LGU·LGP	FGU·FGP	LGPN	FGPN
1-phase 10W	10	1/ 3	500	600	59	6	0.10	0.01	70 (100V) (200V)	P.D41 Fig.D-45 1.5kg	P.D41 Fig.D-46 1.5kg	P.D41 Fig.D-47 1.5kg	P.D41 Fig.D-48 1.5kg
		1/ 5	300	360	78	8	0.20	0.02					
		1/ 10	150	180	137	14	0.39	0.04					
		1/ 15	100	120	206	21	0.69	0.07					
		1/ 20	75	90	245	25	0.88	0.09					
		1/ 25	60	72	274	28	1.08	0.11					
		1/ 30	50	60	314	32	1.27	0.13					
		1/ 40	37.5	45	343	35	1.76	0.18					
		1/ 50	30	36	343	35	2.16	0.22					
		1/ 60	25	30	343	35	2.65	0.27					
		1/ 80	18.8	22.5	343	35	3.33	0.34					
		1/100	15	18	343	35	4.21	0.43					
		1/120	12.5	15	343	35	5.00	0.51					
1/160	9.4	11.2	343	35	6.66	0.68							
1/200	7.5	9	343	35	7.84	0.8							

Note) The allowable O.H.L indicated are the values in the central position of the output shaft.
Be sure to read the cautions stated on Page D19.

Torque-Rotation Speed Characteristic Graph Note) 100% torque shows the allowable torque at high speed.



Model Code P.D34	Lead-Wire/Terminal Box Position Mark P.E54	Option P.E110 ~ E112
----------------------------	--	--------------------------------



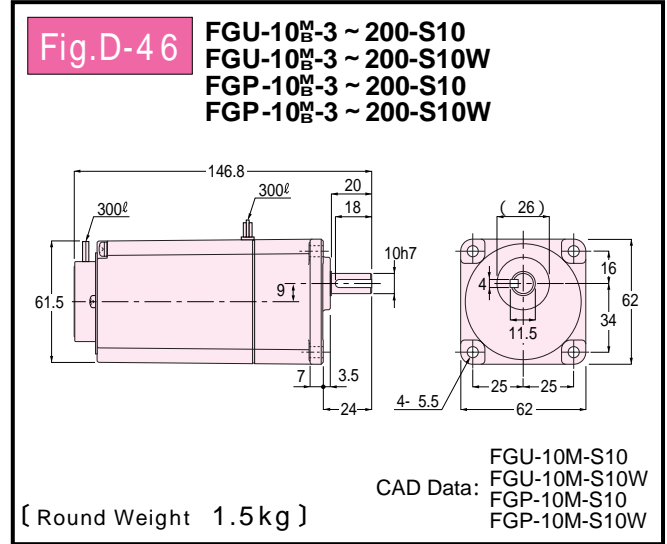
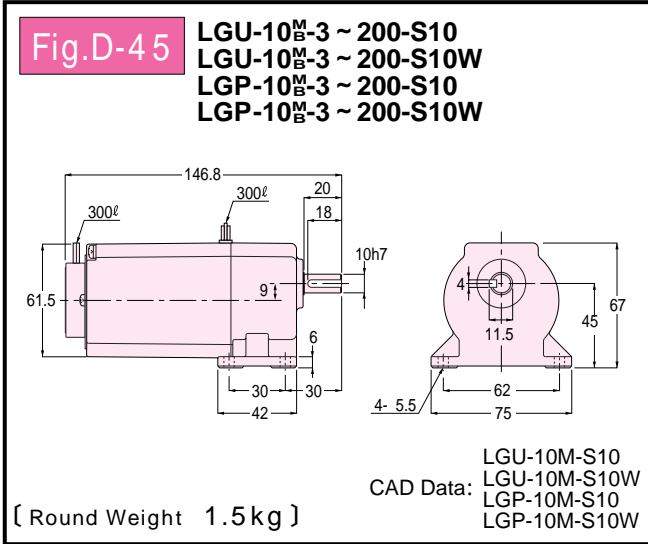
Foot Mount type



Flange Mount type

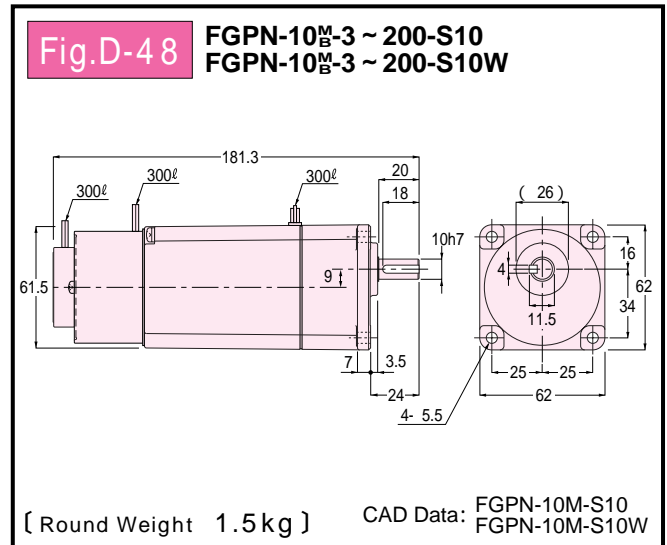
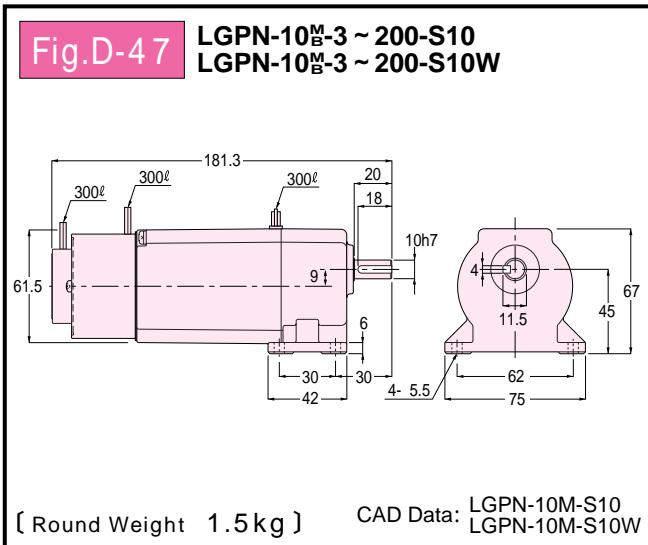
Foot Mount Type Speed control gearmotor

Flange Mount Type Speed control gearmotor



Foot Mount Type Speed control gearmotor with Brake

Flange Mount Type Speed control gearmotor with Brake

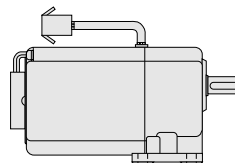


Note) Since the figure in the parenthesis is the one with black scale, add more than 0.5mm to that figure for the diameter of the connecting hole.
 In the CAD data, the file name is common to the both type, M(Metal type) and B(Bearing type).

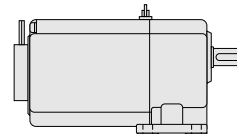
As for motor-type:

"U-Type" and "P-Type" are available in the Speed Control Gearmotor.
 Dimensions shown in the dimension diagram are all that for the "P-Type". In case of "U-Type", the only difference is the part of lead wire which has a connector as shown in the right.

U-Type Lead wire with connector 150mm



P-Type Motor lead wire 300mm
 Lead wire for generator 300mm (white·white)



Parallel Shaft Performance Table/ Dimension
Gearmotor with Brake
Water-resistant Gearmotor with Brake
Speed Control Gearmotor
Gearmotor with Clutch /Brake
GT-Type Gearmotor with Brake
Right Angle Shaft Performance Table/ Dimension
Gearmotor with Brake
With Water-resistant Brake Motor
Speed Control Gearmotor
Concentric Hollow Shaft Performance Table/ Dimension
Gearmotor with Brake
With Water-resistant Brake Motor
Speed Control Gearmotor
Parallel Shaft GTR-L Series Performance Table/ Dimension
Reversible Gearmotor with Brake
Speed Control Gearmotor with Brake
Technical Information
Standard Motors
Cautions for Safety
Option

GTR-L Series Speed control gearmotors Speed control brake motors

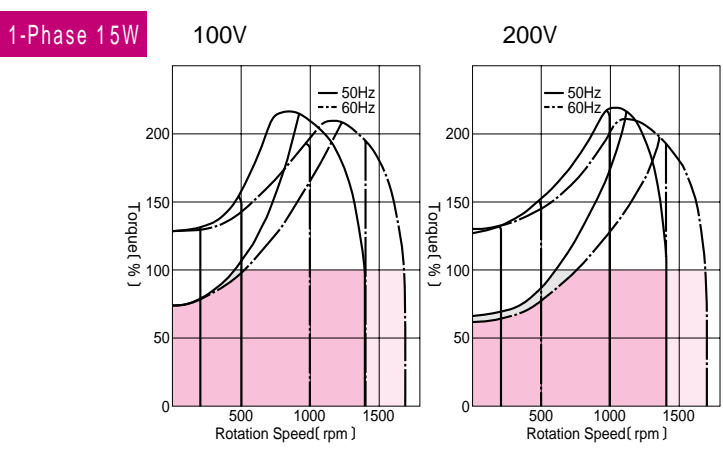
G-Type[Parallel Shaft] 1-Phase 15W

Motor Specs.	Capacity	Motor Capacity Designation	Voltage (V)	Frequency (Hz)	Frame No.	MAX Current (A)	High speed rotation range (rpm)	Capacitor (μF)	Insulation Classification	Protective system
Standard Voltage (Continuous Rated 4 Poles)	15W	50/60	S15	100/100	12	0.6/0.6	500 ~ 1350/550 ~ 1650	6	E	Totally Enclosed
Double Voltage (Continuous Rated 4 Poles)		50/60	S15W	200/200	12	0.3/0.3	600 ~ 1400/750 ~ 1700	1.5		

Motor Capacity	Frame No.	Reduction Ratio	Output Shaft Rotation Speed (rpm)		Output Shaft Allowable O.H.L		Output Shaft Allowable Torque			Page, Diagram No. of the Outer Dimension Diagram, Round Weight			
			50Hz	60Hz	N	kgf	high speed		50rpm (%)	Gearmotor		Gearmotor with Brake	
							N·m	kgf·m		LGU·LGP	FGU·FGP	LGPN	FGPN
1-phase 15W	12	1/ 3	500	600	98	10	0.20	0.02	70 (100V) 60 (200V)	P.D43 Fig.D-49 2kg	P.D43 Fig.D-50 2kg	P.D43 Fig.D-51 2.5kg	P.D43 Fig.D-52 2.5kg
		1/ 5	300	360	196	20	0.29	0.03					
		1/ 10	150	180	294	30	0.69	0.07					
		1/ 15	100	120	343	35	0.98	0.10					
		1/ 20	75	90	392	40	1.27	0.13					
		1/ 25	60	72	441	45	1.67	0.17					
		1/ 30	50	60	490	50	1.96	0.20					
		1/ 40	37.5	45	490	50	2.65	0.27					
		1/ 50	30	36	490	50	3.33	0.34					
		1/ 60	25	30	490	50	3.92	0.40					
		1/ 80	18.8	22.5	490	50	5.00	0.51					
		1/100	15	18	490	50	6.27	0.64					
		1/120	12.5	15	490	50	7.45	0.76					
		1/160	9.4	11.2	490	50	9.80	1.0					
		1/200	7.5	9	490	50	12.7	1.3					
		1/240	6.3	7.5	490	50	14.7	1.5					
		* 1/300	5	6	490	50	14.7	1.5	90 (100V) 75 (200V)				
		* 1/360	4.2	5	490	50	14.7	1.5					

Note) The allowable O.H.L indicated are the values in the central position of the output shaft.
The models marked with * are low torque type. Be sure to refer to the allowable torque rating in the performance table.
Be sure to read the cautions stated on Page D9.

Torque-Rotation Speed Characteristic Graph Note) 100% torque shows the allowable torque at high speed.



Model Code P.D34	Lead-Wire/Terminal Box Position Mark P.E54	Option P.E110 ~ E112
----------------------------	--	--------------------------------



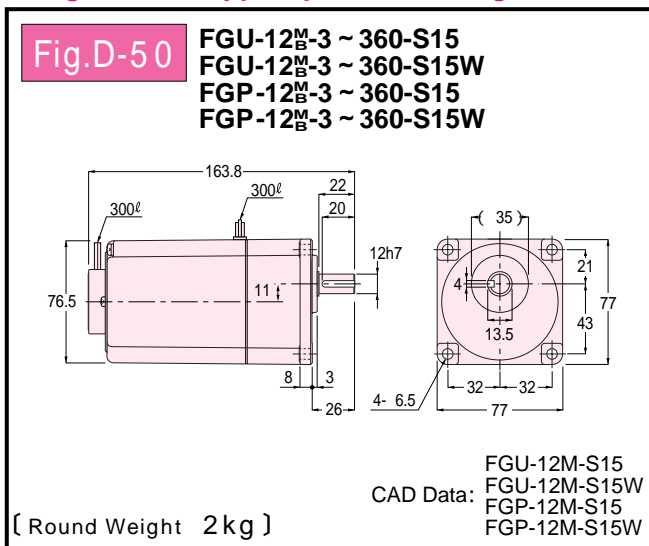
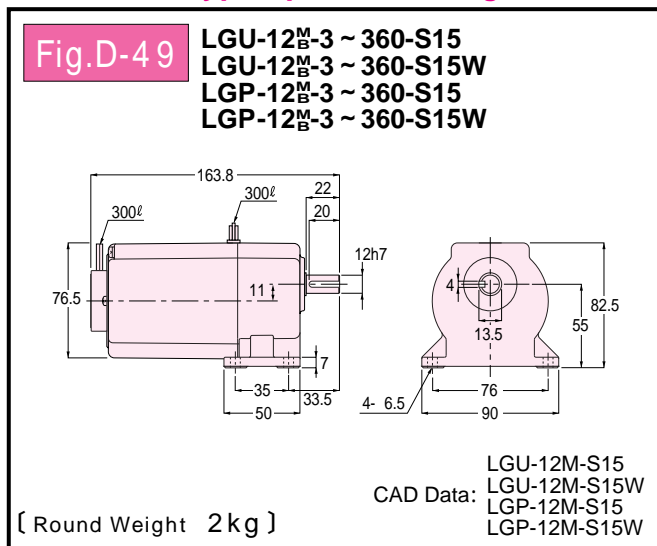
Foot Mount type



Flange Mount type

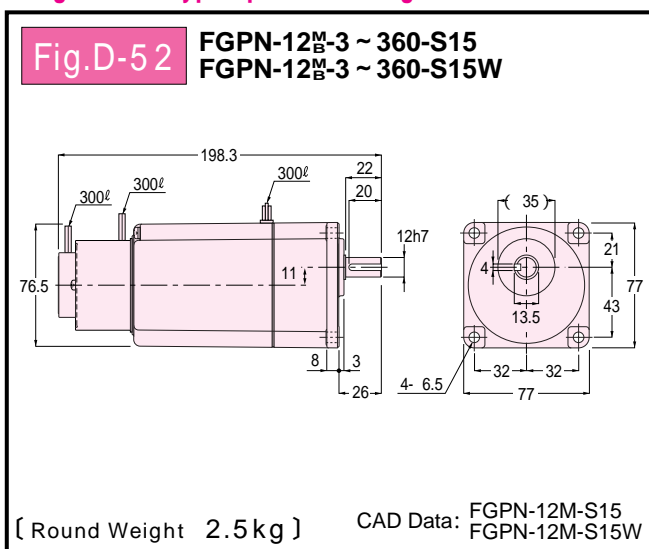
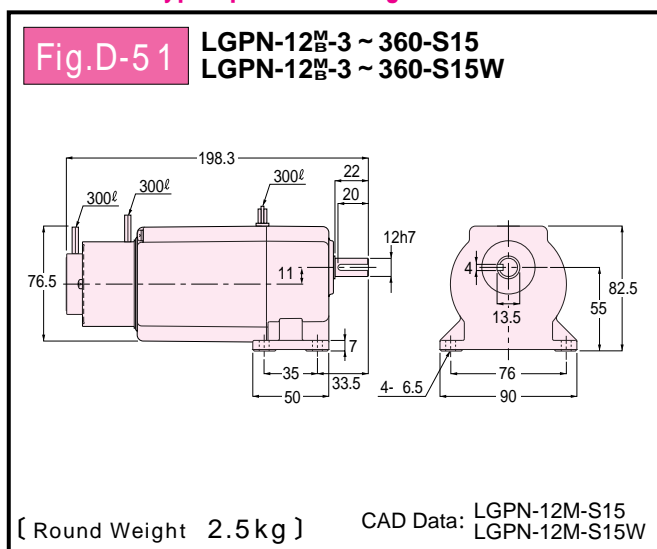
Foot Mount Type Speed control gearmotor

Flange Mount Type Speed control gearmotor



Foot Mount Type Speed control gearmotor with Brake

Flange Mount Type Speed control gearmotor with Brake

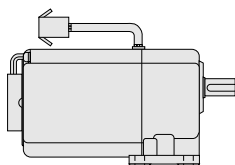


Note) Since the figure in the parenthesis is the one with black scale, add more than 0.5mm to that figure for the diameter of the connecting hole.
 In the CAD data, the file name is common to the both type, M(Metal type) and B(Bearing type).

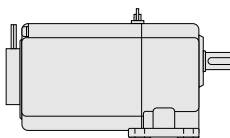
As for motor-type:

"U-Type" and "P-Type" are available in the Speed Control Gearmotor.
 Dimensions shown in the dimension diagram are all that for the "P-Type". In case of "U-Type", the only difference is the part of lead wire which has a connector as shown in the right.

U-Type Lead wire with connector 150mm



P-Type Motor lead wire 300mm
 Lead wire for generator 300mm (white·white)



Parallel Shaft Performance Table/ Dimension
Gearmotor with Brake
Water-resistant Gearmotor with Brake
Speed Control Gearmotor
Gearmotor with Clutch /Brake
GT-Type Gearmotor with Brake
Right Angle Shaft Performance Table/ Dimension
Gearmotor with Brake
With Water-resistant Brake Motor
Speed Control Gearmotor
Concentric Hollow Shaft Performance Table/ Dimension
Gearmotor with Brake
With Water-resistant Brake Motor
Speed Control Gearmotor
Parallel Shaft GTR-L Series Performance Table/ Dimension
Reversible Gearmotor with Brake
Speed Control Gearmotor with Brake
Technical Information
Standard Motors
Cautions for Safety
Option

GTR-L Series Speed control gearmotors Speed control brake motors

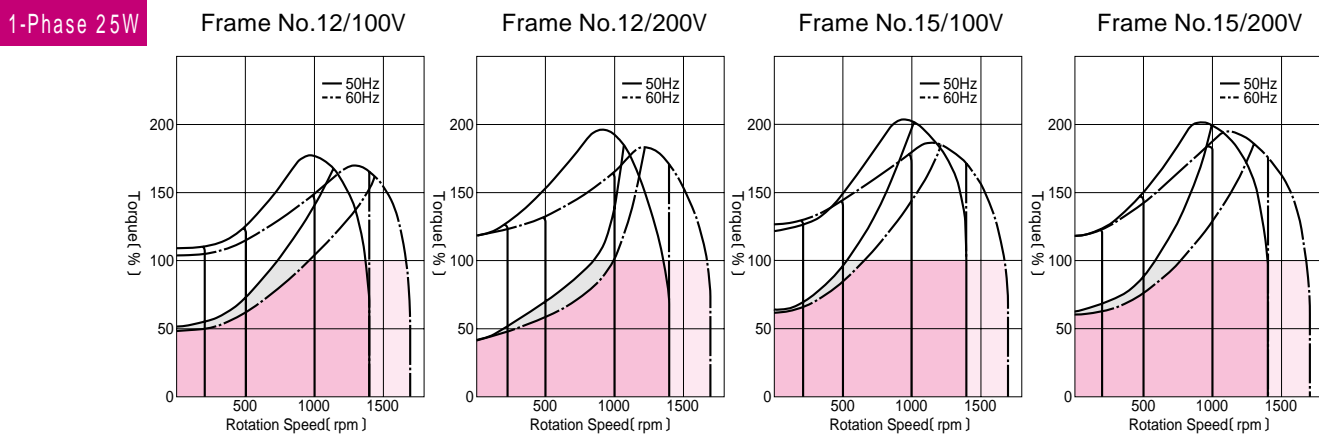
G-Type[Parallel Shaft] 1-Phase 25W

Motor Specs.	Capacity	Motor Capacity Designation	Voltage (V)	Frequency (Hz)	Frame No.	MAX Current (A)	High speed rotation range (rpm)	Capacitor (μF)	Insulation Classification	Protective system
Standard Voltage (Continuous Rated 4 Poles)	25W	S25	100/100	50/60	12	0.6/0.6	750 ~ 1350/1000 ~ 1650	8	E	Totally Enclosed
Double Voltage (Continuous Rated 4 Poles)					S25W	200/200	50/60	15		
	12	0.4/0.4	850 ~ 1350/1000 ~ 1650	2						
					15	0.4/0.4	600 ~ 1350/800 ~ 1650	2		

Motor Capacity	Frame No.	Reduction Ratio	Output Shaft Rotation Speed (rpm)		Output Shaft Allowable O.H.L		Output Shaft Allowable Torque			Page, Diagram No. of the Outer Dimension Diagram, Round Weight				
			50Hz	60Hz	N	kgf	high speed		Gearmotor		Gearmotor with Brake			
							50rpm (%)	75rpm (%)	LGU·LGP	FGU·FGP	LGPN	FGPN		
1-phase 25W	12	1/ 3	500	600	98	10	0.29	0.03	50 (100V) 45 (200V)	P.D45 Fig.D-53 2kg	P.D45 Fig.D-55 2kg	P.D43 Fig.D-57 2.5kg	P.D43 Fig.D-59 2.5kg	
		1/ 5	300	360	196	20	0.59	0.06						
		1/ 10	150	180	294	30	1.08	0.11						
		1/ 15	100	120	343	35	1.67	0.17						
		1/ 20	75	90	392	40	2.25	0.23						
		1/ 25	60	72	441	45	2.74	0.28						
		1/ 30	50	60	490	50	3.33	0.34						
		1/ 40	37.5	45	490	50	4.41	0.45						
		1/ 50	30	36	490	50	5.49	0.56						
		1/ 60	25	30	490	50	6.66	0.68						
		1/ 80	18.8	22.5	490	50	8.43	0.86						
		1/100	15	18	490	50	10.8	1.1						
	1/120	12.5	15	490	50	12.7	1.3							
		15	1/160	9.4	11.2	686	70	16.7	1.7	60 (100V) 75 (200V)	P.D45 Fig.D-54 2.5kg	P.D45 Fig.D-56 2.5kg	P.D43 Fig.D-58 3kg	P.D43 Fig.D-60 3kg
	1/200		7.5	9	686	70	20.6	2.1						
	1/240		6.3	7.5	686	70	25.5	2.6						
	* 1/300		5	6	686	70	25.5	2.7						
	* 1/360		4.2	5	686	70	25.5	2.7						

Note) The allowable O.H.L indicated are the values in the central position of the output shaft.
The models marked with * are low torque type. Be sure to refer to the allowable torque rating in the performance table.
Be sure to read the cautions stated on Page D9.

Torque-Rotation Speed Characteristic Graph Note) 100% torque shows the allowable torque at high speed.



Model Code P.D34	Lead-Wire/Terminal Box Position Mark P.E54	Option P.E110 ~ E112
---------------------	--	-------------------------



Foot Mount type

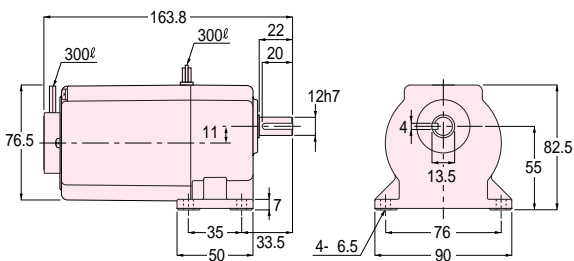


Flange Mount type

Foot Mount Type Speed control gearmotor

Fig.D-53

LGU-12_B^M-3 ~ 120-S25
 LGU-12_B^M-3 ~ 120-S25W
 LGP-12_B^M-3 ~ 120-S25
 LGP-12_B^M-3 ~ 120-S25W

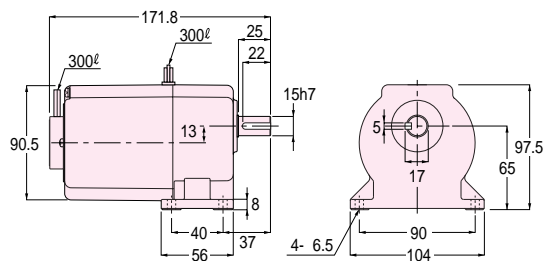


CAD Data:
 LGU-12M-S25
 LGU-12M-S25W
 LGP-12M-S25
 LGP-12M-S25W

[Round Weight 2 kg]

Fig.D-54

LGU-15_B^M-160 ~ 360-S25
 LGU-15_B^M-160 ~ 360-S25W
 LGP-15_B^M-160 ~ 360-S25
 LGP-15_B^M-160 ~ 360-S25W



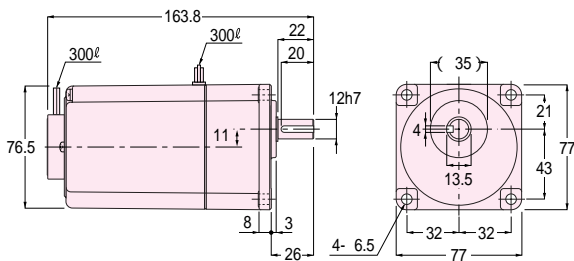
CAD Data:
 LGU-15M-S25
 LGU-15M-S25W
 LGP-15M-S25
 LGP-15M-S25W

[Round Weight 2.5 kg]

Flange Mount Type Speed control gearmotor

Fig.D-55

FGU-12_B^M-3 ~ 120-S25
 FGU-12_B^M-3 ~ 120-S25W
 FGP-12_B^M-3 ~ 120-S25
 FGP-12_B^M-3 ~ 120-S25W

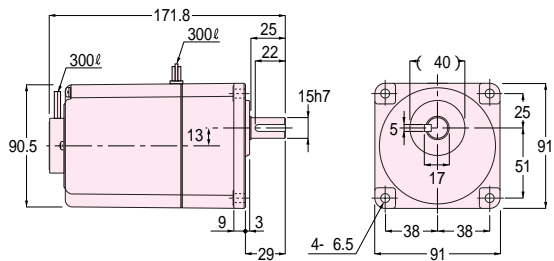


CAD Data:
 FGU-12M-S25
 FGU-12M-S25W
 FGP-12M-S25
 FGP-12M-S25W

[Round Weight 2 kg]

Fig.D-56

FGU-15_B^M-160 ~ 360-S25
 FGU-15_B^M-160 ~ 360-S25W
 FGP-15_B^M-160 ~ 360-S25
 FGP-15_B^M-160 ~ 360-S25W



CAD Data:
 FGU-15M-S25
 FGU-15M-S25W
 FGP-15M-S25
 FGP-15M-S25W

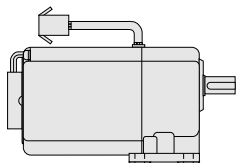
[Round Weight 2.5 kg]

Note) Since the figure in the parenthesis is the one with black scale, add more than 0.5mm to that figure for the diameter of the connecting hole. In the CAD data, the file name is common to the both type, M(Metal type) and B(Bearing type).

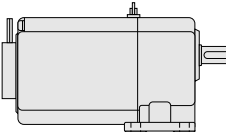
As for motor-type:

"U-Type" and "P-Type" are available in the Speed Control Gearmotor. Dimensions shown in the dimension diagram are all that for the "P-Type". In case of "U-Type", the only difference is the part of lead wire which has a connector as shown in the right.

U-Type Lead wire with connector 150mm



P-Type Motor lead wire 300mm
 Lead wire for generator 300mm (white-white)



Parallel Shaft Performance Table/
Dimension

Gearmotor with Brake

Water-resistant Gearmotor with Brake

Speed Control Gearmotor

Gearmotor with Clutch /Brake

GT-Type Gearmotor with Brake

Right Angle Shaft Performance Table/
Dimension

Gearmotor with Brake

With Water-resistant Brake Motor

Speed Control Gearmotor

Concentric Hollow Shaft Performance Table/
Dimension

Gearmotor with Brake

With Water-resistant Brake Motor

Speed Control Gearmotor

Parallel Shaft GTR-L Series Performance Table/
Dimension

Reversible Gearmotor with Brake

Speed Control Gearmotor with Brake

Technical Information

Standard Motors

Cautions for Safety

Option

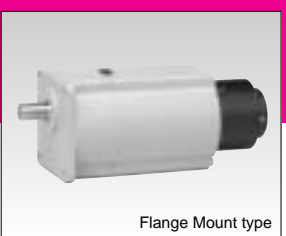
GTR-L Series Speed control gearmotors Speed control brake motors

G-Type(Parallel Shaft) 1-Phase 25W

Foot Mount Type Speed control gearmotor with Brake

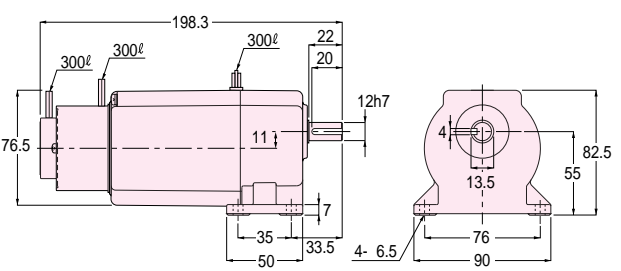


Foot Mount type



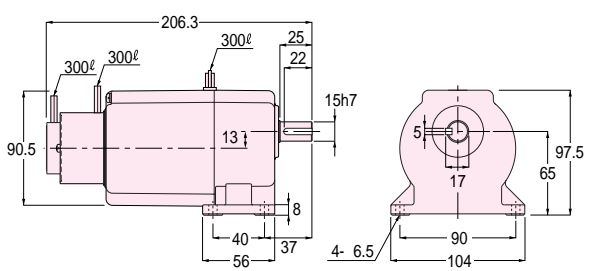
Flange Mount type

Fig.D-57 LGPN-12_B^M-3 ~ 120-S25
LGPN-12_B^M-3 ~ 120-S25W



[Round Weight 2.5 kg] CAD Data: LGPN-12M-S25
LGPN-12M-S25W

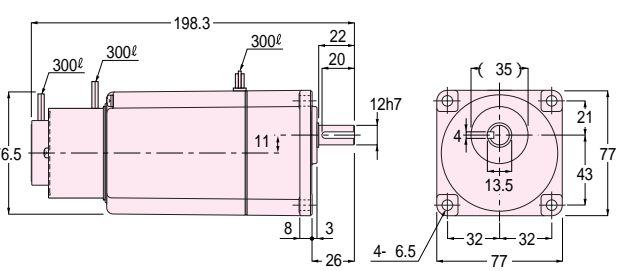
Fig.D-58 LGPN-15_B^M-160 ~ 360-S25
LGPN-15_B^M-160 ~ 360-S25W



[Round Weight 3 kg] CAD Data: LGPN-15M-S25
LGPN-15M-S25W

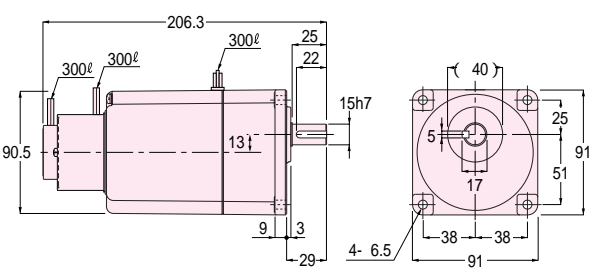
Flange Mount Type Speed control gearmotor with Brake

Fig.D-59 FGPN-12_B^M-3 ~ 120-S25
FGPN-12_B^M-3 ~ 120-S25W



[Round Weight 2.5 kg] CAD Data: FGPN-12M-S25
FGPN-12M-S25W

Fig.D-60 FGPN-15_B^M-160 ~ 360-S25
FGPN-15_B^M-160 ~ 360-S25W

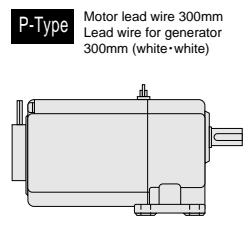
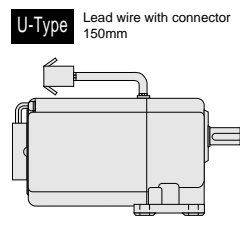


[Round Weight 3 kg] CAD Data: FGPN-15M-S25
FGPN-15M-S25W

Note) Since the figure in the parenthesis is the one with black scale, add more than 0.5mm to that figure for the diameter of the connecting hole. In the CAD data, the file name is common to the both type, M(Metal type) and B(Bearing type).

As for motor-type:

"U-Type" and "P-Type" are available in the Speed Control Gearmotor. Dimensions shown in the dimension diagram are all that for the "P-Type". In case of "U-Type", the only difference is the part of lead wire which has a connector as shown in the right.



Model Code
P.D34

Lead-Wire/Terminal Box
Position Mark
P.E54

Option
P.E110 ~ E112

Parallel Shaft
Performance
Table/
Dimension

Gearmotor
with Brake

Water-
resistant
Gearmotor
with Brake

Speed
Control
Gearmotor

Gearmotor
with Clutch
/Brake

GT-Type
Gearmotor
with Brake

Right Angle Shaft
Performance
Table/
Dimension

Gearmotor
with Brake

With Water-
resistant
Brake Motor

Speed
Control
Gearmotor

Concentric Hollow Shaft
Concentric Solid Shaft
Performance Table/
Dimension

Gearmotor
with Brake

With Water-
resistant
Brake Motor

Speed
Control
Gearmotor

Parallel Shaft
GTR-L Series
Performance
Table/
Dimension

Reversible
Gearmotor
with Brake

Speed
Control
Gearmotor
with Brake

Technical
Information

Standard
Motors

Cautions
for Safety

Option

GTR-L Series Speed control gearmotors Speed control brake motors

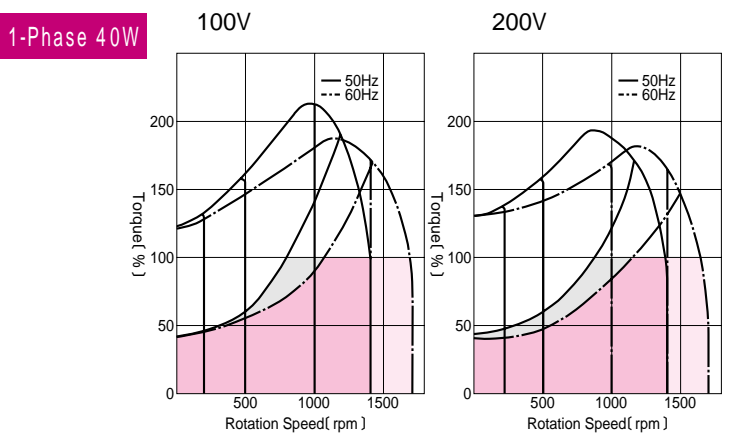
G-Type[Parallel Shaft] 1-Phase 40W

Motor Specs.	Capacity	Motor Capacity Designation	Voltage (V)	Frequency (Hz)	Frame No.	MAX Current (A)	High speed rotation range (rpm)	Capacitor (μF)	Insulation Classification	Protective system
Standard Voltage (Continuous Rated 4 Poles)	40W	S40	100/100	50/60	15	0.9/0.9	800 ~ 1350/1050 ~ 1650	12	E	Totally Enclosed
Double Voltage (Continuous Rated 4 Poles)		S40W	200/200	50/60	15	0.5/0.5	900 ~ 1350/1300 ~ 1650	3		

Motor Capacity	Frame No.	Reduction Ratio	Output Shaft Rotation Speed (rpm)		Output Shaft Allowable O.H.L		Output Shaft Allowable Torque			Page, Diagram No. of the Outer Dimension Diagram, Round Weight			
			50Hz	60Hz	N	kgf	high speed		50rpm (%)	Gearmotor		Gearmotor with Brake	
							N·m	kgf·m		LGU·LGP	FGU·FGP	LGPN	FGPN
1-phase 40W	15	1/ 3	500	600	147	15	0.49	0.05	40 (100V) (200V)	P.D49 Fig.D-61 3kg	P.D49 Fig.D-62 3kg	P.D49 Fig.D-63 3kg	P.D49 Fig.D-64 3kg
		1/ 5	300	360	294	30	0.88	0.09					
		1/ 10	150	180	343	35	1.76	0.18					
		1/ 15	100	120	441	45	2.65	0.27					
		1/ 20	75	90	490	50	3.53	0.36					
		1/ 25	60	72	539	55	4.41	0.45					
		1/ 30	50	60	637	65	5.29	0.54					
		1/ 40	37.5	45	686	70	7.06	0.72					
		1/ 50	30	36	686	70	8.82	0.90					
		1/ 60	25	30	686	70	10.8	1.1					
		1/ 80	18.8	22.5	686	70	13.7	1.4					
		1/100	15	18	686	70	16.7	1.7					
		1/120	12.5	15	686	70	20.6	2.1					
		1/160	9.4	11.2	686	70	26.5	2.7					
		* 1/200	7.5	9	686	70	26.5	2.7					
		* 1/240	6.3	7.5	686	70	26.5	2.7					
* 1/300	5	6	686	70	26.5	2.7							
* 1/360	4.2	5	686	70	26.5	2.7							

Note) The allowable O.H.L indicated are the values in the central position of the output shaft.
The models marked with * are low torque type. Be sure to refer to the allowable torque rating in the performance table.
Be sure to read the cautions stated on Page D9.

Torque-Rotation Speed Characteristic Graph Note) 100% torque shows the allowable torque at high speed.



Model Code P.D34	Lead-Wire/Terminal Box Position Mark P.E54	Option P.E110 ~ E112
----------------------------	--	--------------------------------



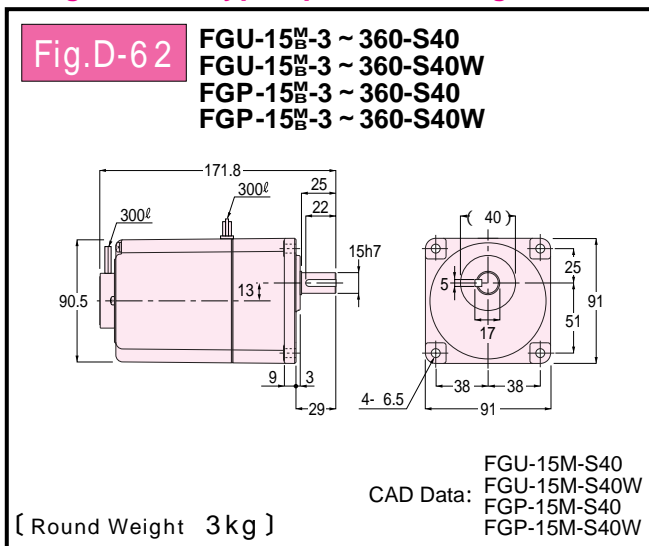
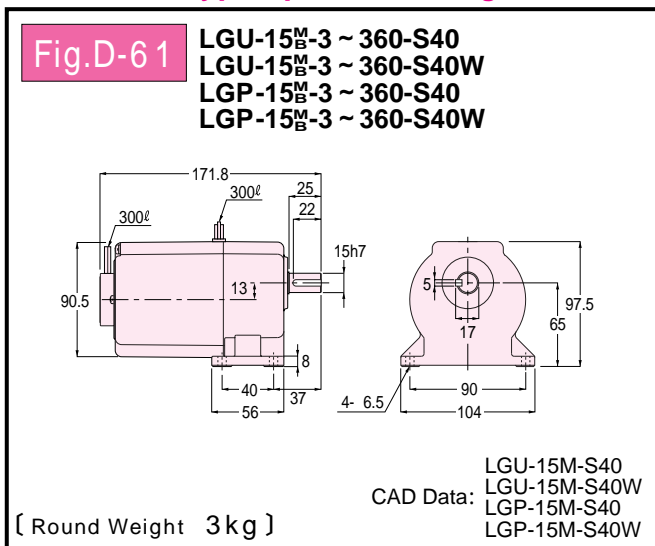
Foot Mount type



Flange Mount type

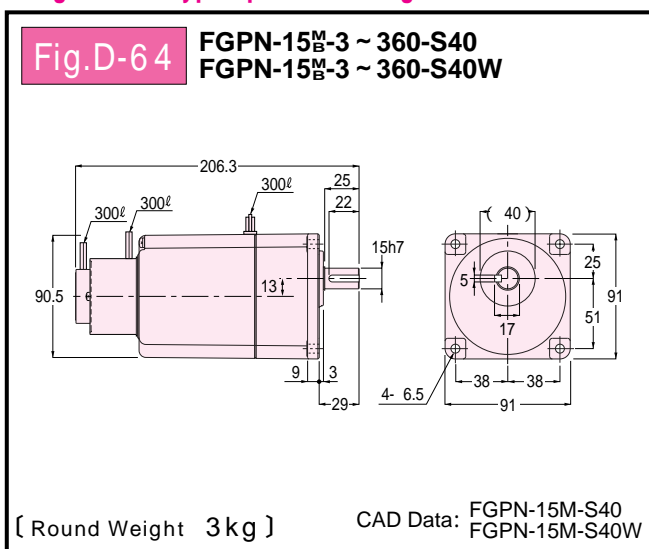
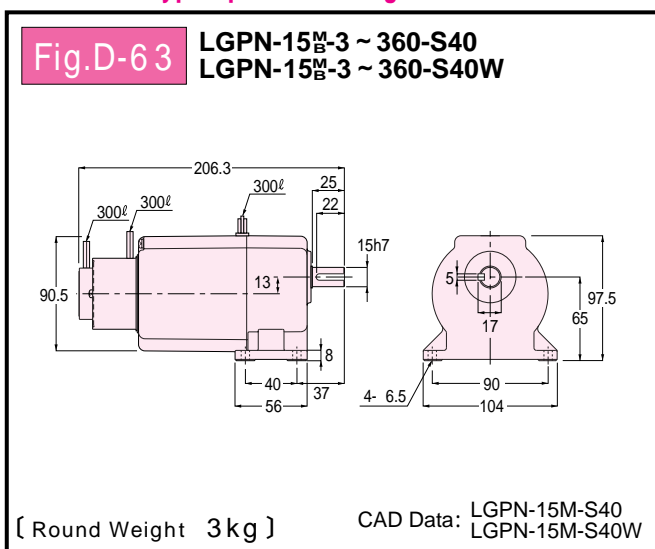
Foot Mount Type Speed control gearmotor

Flange Mount Type Speed control gearmotor



Foot Mount Type Speed control gearmotor with Brake

Flange Mount Type Speed control gearmotor with Brake

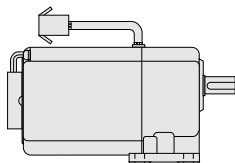


Note) Since the figure in the parenthesis is the one with black scale, add more than 0.5mm to that figure for the diameter of the connecting hole.
 In the CAD data, the file name is common to the both type, M(Metal type) and B(Bearing type).

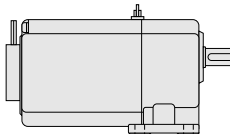
As for motor-type:

"U-Type" and "P-Type" are available in the Speed Control Gearmotor.
 Dimensions shown in the dimension diagram are all that for the "P-Type". In case of "U-Type", the only difference is the part of lead wire which has a connector as shown in the right.

U-Type Lead wire with connector 150mm



P-Type Motor lead wire 300mm
 Lead wire for generator 300mm (white·white)



Parallel Shaft Performance Table/ Dimension
Gearmotor with Brake
Water-resistant Gearmotor with Brake
Speed Control Gearmotor
Gearmotor with Clutch /Brake
GT-Type Gearmotor with Brake
Right Angle Shaft Performance Table/ Dimension
Gearmotor with Brake
With Water-resistant Brake Motor
Speed Control Gearmotor
Concentric Hollow Shaft Performance Table/ Dimension
Gearmotor with Brake
With Water-resistant Brake Motor
Speed Control Gearmotor
Parallel Shaft GTR-L Series Performance Table/ Dimension
Reversible Gearmotor with Brake
Speed Control Gearmotor with Brake
Technical Information
Standard Motors
Cautions for Safety
Option